



MLS 655219 Lake Land

**\$209,900**



**Description:**

This huge double lot on Portage Lake offers stunning tree cover, loads of privacy, and beautiful building sites. Consisting of 7 magnificent acres with 396' of gradual lakeshore leading to level lakefront. Electrical service into the property along with captivating views and southern exposure. Don't miss your chance to own this amazing piece of waterfront.

**Additional Details:**

Lot Acres	7
Lot Dimensions	396x724x360x900
School District	309
Taxes	\$1,196
Taxes with Assessments	\$1,196
Tax Year	2024

**Additional Features:**

**Driving Directions:**

From 34/71 in Park Rapids, North on 71 to a left on Far Portage Drive to property.



Listed By:  
Wolff & Simon Real Estate

Affinity Real Estate Inc. participates in the Regional Multiple Listing Service of Minnesota, Inc Broker Reciprocity (sm) program, allowing us to display other broker's listings on our website. All properties are subject to prior sale, change or withdrawal.



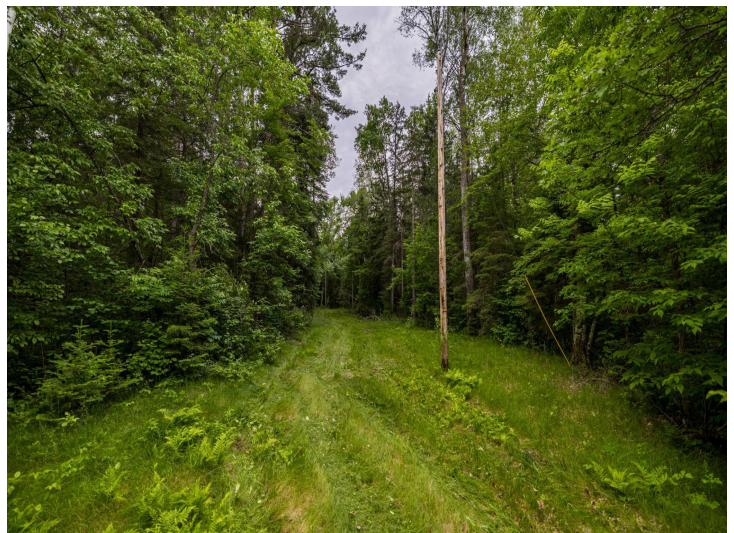
Call Affinity Real Estate

**218-237-3333**

[info@affinityrealestate.com](mailto:info@affinityrealestate.com)



Affinity Real Estate - 600 Park Avenue South - Park Rapids MN 56470



website: [www.AffinityRealEstate.com](http://www.AffinityRealEstate.com) | email: [info@affinityrealestate.com](mailto:info@affinityrealestate.com) | office: 218-237-3333 | fax: 218-237-3377



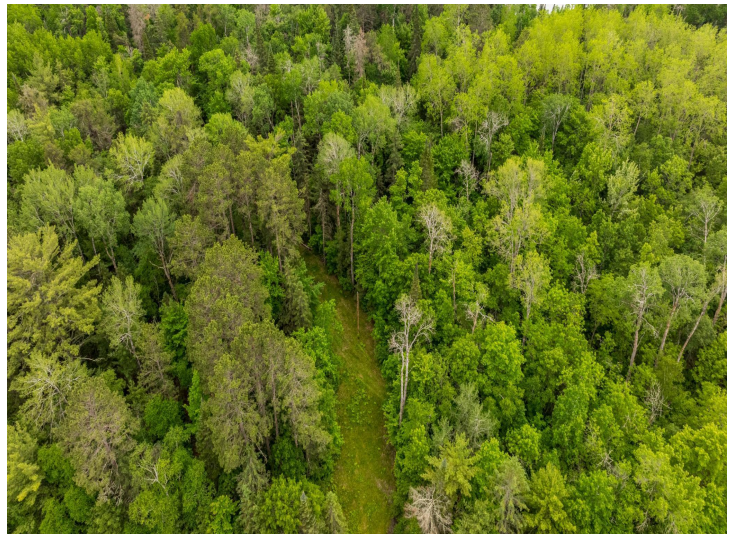
**\$209,900**  
MLS 6555219 Lake Land  
11187 Far Portage Drive  
Park Rapids MN 56470



website: [www.AffinityRealEstate.com](http://www.AffinityRealEstate.com) | email: [info@affinityrealestate.com](mailto:info@affinityrealestate.com) | office: 218-237-3333 | fax:218-237-3377



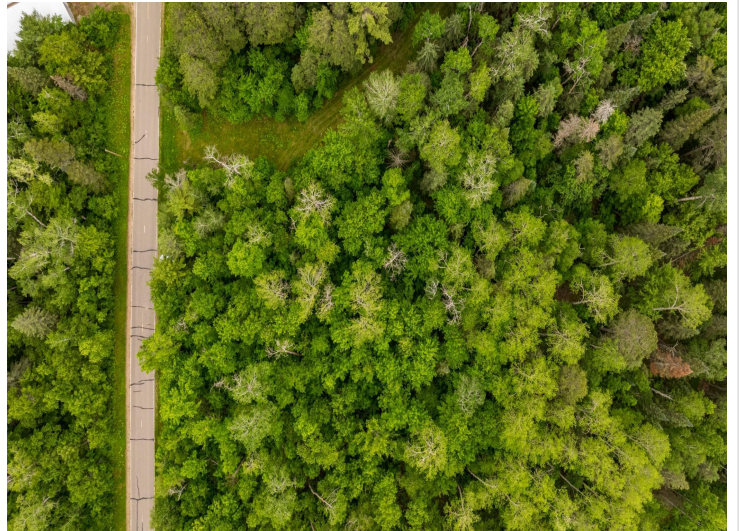
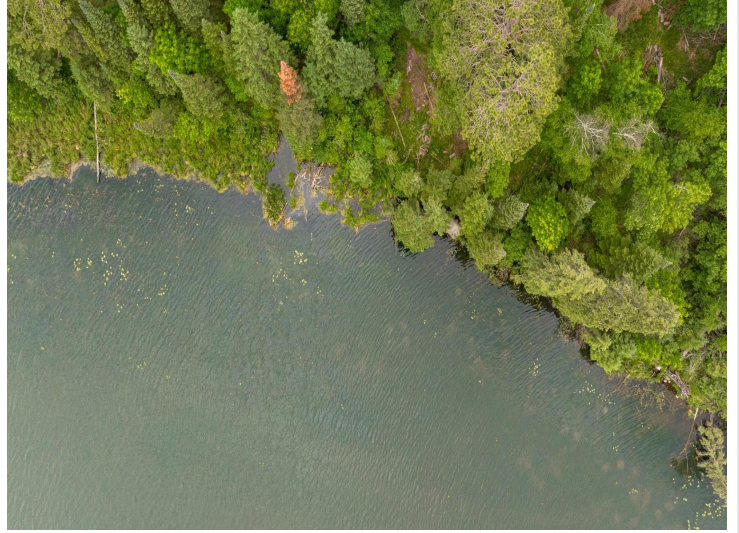
**\$209,900**  
MLS 6555219 Lake Land  
11187 Far Portage Drive  
Park Rapids MN 56470



website: [www.AffinityRealEstate.com](http://www.AffinityRealEstate.com) | email: [info@affinityrealestate.com](mailto:info@affinityrealestate.com) | office: 218-237-3333 | fax:218-237-3377



**\$209,900**  
MLS 6555219 Lake Land  
11187 Far Portage Drive  
Park Rapids MN 56470



website: [www.AffinityRealEstate.com](http://www.AffinityRealEstate.com) | email: [info@affinityrealestate.com](mailto:info@affinityrealestate.com) | office: 218-237-3333 | fax:218-237-3377



**\$209,900**  
MLS 6555219 Lake Land  
11187 Far Portage Drive  
Park Rapids MN 56470



website: [www.AffinityRealEstate.com](http://www.AffinityRealEstate.com) | email: [info@affinityrealestate.com](mailto:info@affinityrealestate.com) | office: 218-237-3333 | fax:218-237-3377



**\$209,900**

MLS 6555219 Lake Land  
11187 Far Portage Drive  
Park Rapids MN 56470