



MLS 6555588 Residential

\$349,900

2,584 sq ft
5 bedrooms
2 baths

10717 Insbrook Drive
Park Rapids MN 56470

Status: Pending

Description:

Discover serenity in this charming country home nestled on 3.54 acres, boasting 5 bedrooms and 2 baths with heated attached garage. Embrace the spacious living areas, ideal for family gatherings and relaxation. A highlight is the expansive 38x50 finished shop with 14' side walls, perfect for hobbies or storage. Located near Two Inlets State Forest and Itasca State Park, outdoor enthusiasts will relish proximity to fishing, watersports on nearby lakes, and seamless access to the snowmobile and ATV trail system. This property offers a blend of tranquility and adventure, promising a lifestyle immersed in nature's beauty and recreational opportunities.

Additional Details:

Year Built	1996
Lot Acres	3.54
Lot Dimensions	400x385
Garage Stalls	2
School District	309
Taxes	\$2,302
Taxes with Assessments	\$2,512
Tax Year	2024

Additional Features:

Basement: Egress Window(s), Finished, Walkout, Wood **Fuel:** Electric **Garage:** 2 **Heat:** Forced Air, Heat Pump **Sewer:** Mound Septic, Private Sewer, Tank with Drainage Field **Water:** Submersible - 4 Inch, Drilled, Private, Well **Air Conditioning:** Central Air

Driving Directions:

From Hwys. 71/34 in Park Rapids, go North on Hwy 71 turn right on Insbrook Dr to 10717 on right.



Listed By:
Coldwell Banker Crown Realtors

Affinity Real Estate Inc. participates in the Regional Multiple Listing Service of Minnesota, Inc Broker Reciprocity (sm) program, allowing us to display other broker's listings on our website. All properties are subject to prior sale, change or withdrawal.



Call Affinity Real Estate

218-237-3333

info@affinityrealestate.com



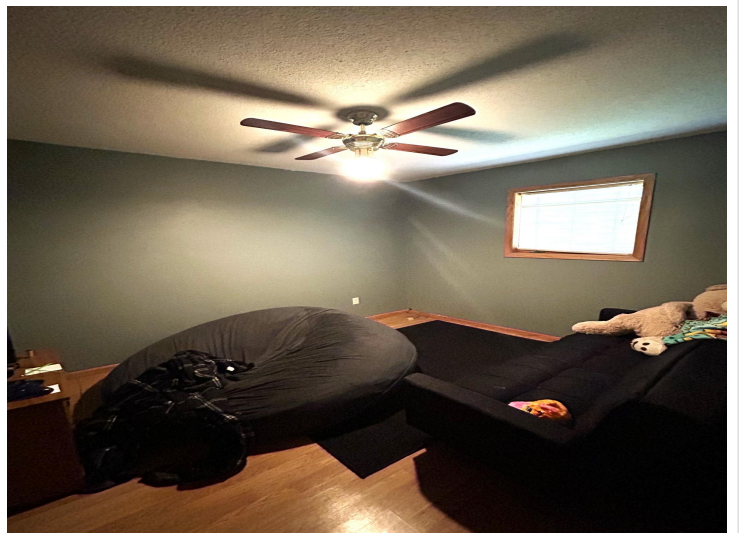
Affinity Real Estate - 600 Park Avenue South - Park Rapids MN 56470



website: www.AffinityRealEstate.com | email: info@affinityrealestate.com | office: 218-237-3333 | fax: 218-237-3377

Affinity
REAL ESTATE INC

\$349,900
MLS 6555588 Residential
10717 Insbrook Drive
Park Rapids MN 56470



website: www.AffinityRealEstate.com | email: info@affinityrealestate.com | office: 218-237-3333 | fax:218-237-3377

Affinity
REAL ESTATE INC

\$349,900
MLS 6555588 Residential
10717 Insbrook Drive
Park Rapids MN 56470



website: www.AffinityRealEstate.com | email: info@affinityrealestate.com | office: 218-237-3333 | fax: 218-237-3377

Affinity
REAL ESTATE INC

\$349,900
MLS 6555588 Residential
10717 Insbrook Drive
Park Rapids MN 56470



website: www.AffinityRealEstate.com | email: info@affinityrealestate.com | office: 218-237-3333 | fax:218-237-3377

Affinity
REAL ESTATE INC

\$349,900
MLS 6555588 Residential
10717 Insbrook Drive
Park Rapids MN 56470



website: www.AffinityRealEstate.com | email: info@affinityrealestate.com | office: 218-237-3333 | fax:218-237-3377



\$349,900
MLS 6555588 Residential
10717 Insbrook Drive
Park Rapids MN 56470



website: www.AffinityRealEstate.com | email: info@affinityrealestate.com | office: 218-237-3333 | fax:218-237-3377



\$349,900
MLS 6555588 Residential
10717 Insbrook Drive
Park Rapids MN 56470



website: www.AffinityRealEstate.com | email: info@affinityrealestate.com | office: 218-237-3333 | fax:218-237-3377



\$349,900
MLS 655588 Residential
10717 Insbrook Drive
Park Rapids MN 56470