



MLS 6555791 Land

\$44,900

2 Acres
Raw Land

Lot 11 Earle Jenkins Drive
Jenkins MN 56456

Status: Active

Description:

BEAUTIFUL 2 ACRE LOT in a prime location surrounded by lakes, recreational trails, championship golf, restaurants, unique shopping and all of the Brainerd Lakes Area amenities.

Additional Details:

Lot Acres	2
Lot Dimensions	200x438
School District	186
Taxes	\$84
Taxes with Assessments	\$84
Tax Year	2023

Additional Features:

Driving Directions:

From Pequot Lakes, north on 371, turn right on #15, just past the curve at White Pine Knoll to sign on the right.



Listed By:
Edina Realty, Inc.

Affinity Real Estate Inc. participates in the Regional Multiple Listing Service of Minnesota, Inc Broker Reciprocity (sm) program, allowing us to display other broker's listings on our website. All properties are subject to prior sale, change or withdrawal.



Call Affinity Real Estate

218-237-3333

info@affinityrealestate.com



Affinity Real Estate - 600 Park Avenue South - Park Rapids MN 56470



website: www.AffinityRealEstate.com | email: info@affinityrealestate.com | office: 218-237-3333 | fax: 218-237-3377



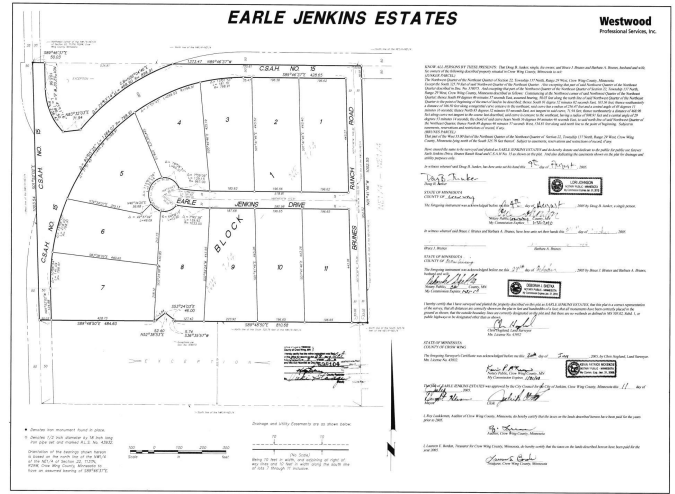
\$44,900
MLS 6555791 Land
Lot 11 Earle Jenkins Drive
Jenkins MN 56456



website: www.AffinityRealEstate.com | email: info@affinityrealestate.com | office: 218-237-3333 | fax:218-237-3377



\$44,900
MLS 6555791 Land
Lot 11 Earle Jenkins Drive
Jenkins MN 56456



website: www.AffinityRealEstate.com | email: info@affinityrealestate.com | office: 218-237-3333 | fax:218-237-3377



\$44,900
 MLS 6555791 Land
 Lot 11 Earle Jenkins Drive
 Jenkins MN 56456