



MLS 6556155 Land

\$49,500

2 Acres
Raw Land

Lot 10 Earle Jenkins Drive
Jenkins MN 56456

Status: Active

Description:

BEAUTIFUL 2 ACRE LOT in a prime location surrounded by lakes, recreational trails, championship golf, restaurants, unique shopping and all of the Brainerd Lakes amenities.

Additional Details:

Lot Acres	2
Lot Dimensions	200x438
School District	186
Taxes	\$86
Taxes with Assessments	\$86
Tax Year	2023

Additional Features:

Driving Directions:

From Pequot Lakes, north on 371 to right on #15, just past the curve at White Pine Knoll to sign on the right.



Listed By:
Edina Realty, Inc.

Affinity Real Estate Inc. participates in the Regional Multiple Listing Service of Minnesota, Inc Broker Reciprocity (sm) program, allowing us to display other broker's listings on our website. All properties are subject to prior sale, change or withdrawal.



Call Affinity Real Estate

218-237-3333

info@affinityrealestate.com



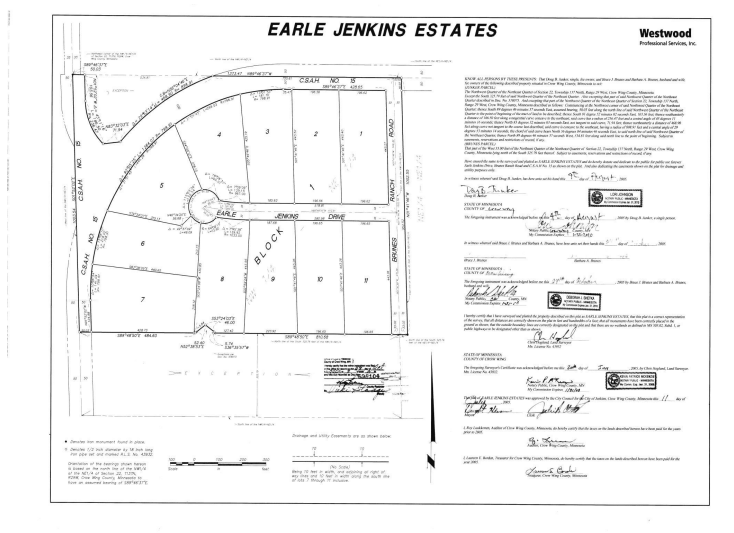
Affinity Real Estate - 600 Park Avenue South - Park Rapids MN 56470



website: www.AffinityRealEstate.com | email: info@affinityrealestate.com | office: 218-237-3333 | fax:218-237-3377



\$49,500
MLS 6556155 Land
Lot 10 Earle Jenkins Drive
Jenkins MN 56456



website: www.AffinityRealEstate.com | email: info@affinityrealestate.com | office: 218-237-3333 | fax:218-237-3377



\$49,500
 MLS 6556155 Land
 Lot 10 Earle Jenkins Drive
 Jenkins MN 56456

