



MLS 6556385 Lake Home

\$669,900

2,861 sq ft
4 bedrooms
4 baths

6740 County 38
Walker MN 56484

Waterfront: Leech

Status: Active

Description:

Beautiful 4-Bed Home on Kabekona Bay of Leech Lake! Discover lakeside living at its finest with this stunning 4-bedroom, 3.5-bathroom home located on Kabekona Bay of Leech Lake. This property boasts rocky and sandy frontage and a shared dock. New roof and staining on exterior of home completed in September. Key Features include an open-concept living space filled with natural light. The living room features large windows with views of the bay. The kitchen is equipped with stainless steel appliances new in 2022, custom cabinets, and granite countertops. Enjoy swimming, fishing, or simply relaxing by the water. The shared dock and dedicated boat slip with a covered boat lift make boating a breeze. Bordering trails perfect for biking and snowmobiling, this property offers year-round outdoor activities right at your doorstep. The total area for the association property is over 4.5 acres. Located in a peaceful and friendly community, this home provides a perfect blend of privacy and convenience. With easy access to local amenities, dining, and shopping.

Additional Details:

Year Built	2005
Lot Acres	0.1
Lot Dimensions	45x87x66
Garage Stalls	2
School District	113
Taxes	\$2,818
Taxes with Assessments	\$2,818
Tax Year	2024

Additional Features:

Basement: Block, Finished **Fuel:** Propane **Garage:** 2 **Heat:** Forced Air, Fireplace(s) **Sewer:** Shared Septic **Water:** Shared System **Air Conditioning:** Central Air

Driving Directions:

From Walker N on Hwy 371 to a left on Co. Rd 38-Follow 38 to property on the Right (North) side of 38. Unit #4.



Listed By:
Cedar Point Realty -Walker

Affinity Real Estate Inc. participates in the Regional Multiple Listing Service of Minnesota, Inc Broker Reciprocity (sm) program, allowing us to display other broker's listings on our website. All properties are subject to prior sale, change or withdrawal.



Call Affinity Real Estate

218-237-3333

info@affinityrealestate.com



Affinity Real Estate - 600 Park Avenue South - Park Rapids MN 56470



website: www.AffinityRealEstate.com | email: info@affinityrealestate.com | office: 218-237-3333 | fax: 218-237-3377

Affinity
REAL ESTATE INC

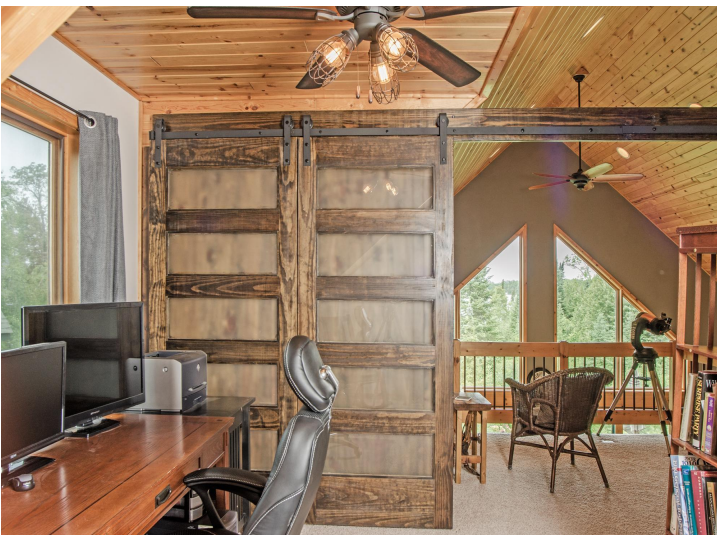
\$669,900
MLS 6556385 Lake Home
6740 County 38
Walker MN 56484



website: www.AffinityRealEstate.com | email: info@affinityrealestate.com | office: 218-237-3333 | fax: 218-237-3377

Affinity
REAL ESTATE INC

\$669,900
MLS 6556385 Lake Home
6740 County 38
Walker MN 56484



website: www.AffinityRealEstate.com | email: info@affinityrealestate.com | office: 218-237-3333 | fax: 218-237-3377

Affinity
REAL ESTATE INC

\$669,900
MLS 6556385 Lake Home
6740 County 38
Walker MN 56484



website: www.AffinityRealEstate.com | email: info@affinityrealestate.com | office: 218-237-3333 | fax:218-237-3377



\$669,900
MLS 6556385 Lake Home
6740 County 38
Walker MN 56484



website: www.AffinityRealEstate.com | email: info@affinityrealestate.com | office: 218-237-3333 | fax: 218-237-3377



\$669,900
MLS 6556385 Lake Home
6740 County 38
Walker MN 56484



website: www.AffinityRealEstate.com | email: info@affinityrealestate.com | office: 218-237-3333 | fax:218-237-3377

Affinity
REAL ESTATE INC

\$669,900
MLS 6556385 Lake Home
6740 County 38
Walker MN 56484



website: www.AffinityRealEstate.com | email: info@affinityrealestate.com | office: 218-237-3333 | fax:218-237-3377



\$669,900
MLS 6556385 Lake Home
6740 County 38
Walker MN 56484



website: www.AffinityRealEstate.com | email: info@affinityrealestate.com | office: 218-237-3333 | fax:218-237-3377

Affinity
REAL ESTATE INC

\$669,900
MLS 6556385 Lake Home
6740 County 38
Walker MN 56484



website: www.AffinityRealEstate.com | email: info@affinityrealestate.com | office: 218-237-3333 | fax:218-237-3377

Affinity
REAL ESTATE INC

\$669,900
MLS 6556385 Lake Home
6740 County 38
Walker MN 56484