



MLS 6557161 Lake Land

\$174,000

Description:

Discover the perfect slice of nature on Rock Lake, just outside of Detroit Lakes, in the heart of Lake Country. Rock Lake is lightly developed with over 10 miles of shoreline. This 1.5-acre parcel has 248 feet of lake shore & offers endless possibilities with no covenants or HOA. Whether you're dreaming of a camping get away or planning to build your dream home, this property is a rare find. Surrounded by majestic hardwoods, you'll enjoy unparalleled privacy & serene natural environment. The picturesque setting offers a peaceful retreat for relaxing & recreation. Adding to its appeal, this property is within 7 miles of the Tamarac Wildlife Refuge, offering abundant opportunities for wildlife observation & recreation. It's also adjacent to the Rock Lake Aquatic Management Area, ensuring the preservation & tranquility that surrounds. Embrace the beauty of lake country living with this unique opportunity. Don't miss out on owning your piece of paradise where nature & potential meet.

Additional Details:

Lot Acres	1.5
Lot Dimensions	lrg.
School District	22
Taxes	(unreported)
Taxes with Assessments	(unreported)
Tax Year	2024

Additional Features:

Driving Directions:

3 miles East of Detroit Lakes on Hwy 34. Turn Left onto Co. Rd. 25 and head North 8.5 miles. Property will be on East side of road.



Listed By:
Real Broker, LLC

Affinity Real Estate Inc. participates in the Regional Multiple Listing Service of Minnesota, Inc Broker Reciprocity (sm) program, allowing us to display other broker's listings on our website. All properties are subject to prior sale, change or withdrawal.



Call Affinity Real Estate

218-237-3333

info@affinityrealestate.com



Affinity Real Estate - 600 Park Avenue South - Park Rapids MN 56470



website: www.AffinityRealEstate.com | email: info@affinityrealestate.com | office: 218-237-3333 | fax:218-237-3377



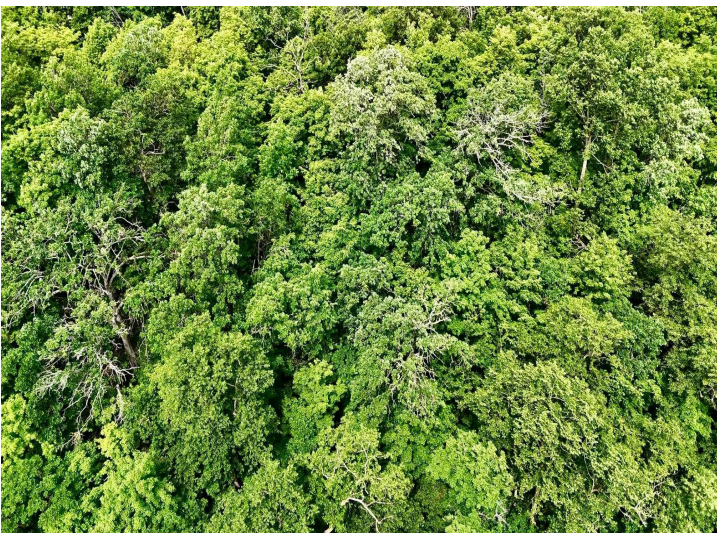
\$174,000
MLS 6557161 Lake Land
TBD Broadway Avenue
Detroit Lakes MN 56501



website: www.AffinityRealEstate.com | email: info@affinityrealestate.com | office: 218-237-3333 | fax:218-237-3377



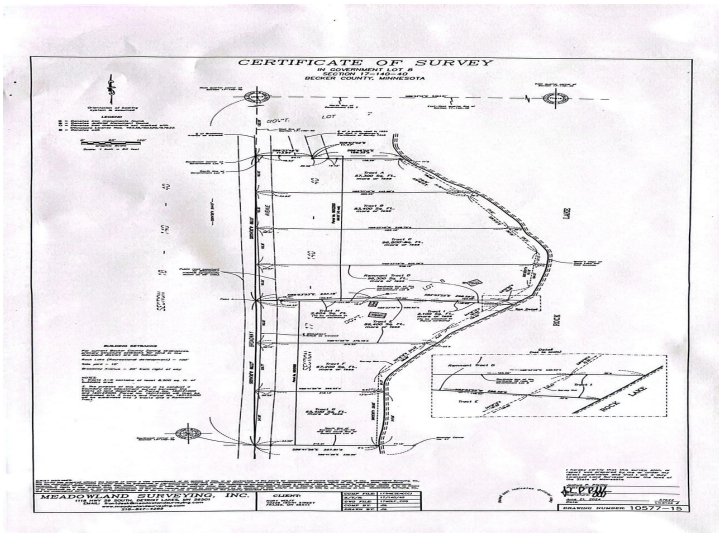
\$174,000
MLS 6557161 Lake Land
TBD Broadway Avenue
Detroit Lakes MN 56501



website: www.AffinityRealEstate.com | email: info@affinityrealestate.com | office: 218-237-3333 | fax:218-237-3377



\$174,000
MLS 6557161 Lake Land
TBD Broadway Avenue
Detroit Lakes MN 56501



website: www.AffinityRealEstate.com | email: info@affinityrealestate.com | office: 218-237-3333 | fax:218-237-3377



\$174,000
MLS 6557161 Lake Land
TBD Broadway Avenue
Detroit Lakes MN 56501