



MLS 6557214 Lake Home

**\$119,000**

1,440 sq ft  
3 bedrooms  
1 baths

10769 Sugar Point Drive  
Cass Lake MN 56633

Waterfront: Leech

Status: Active

**Description:**

This 3 bedroom cabin rests on the shores of Leech Lake on Tribal Leased land. This cabin is ready for a Leech Lake Band of Ojibwe member to purchase and make their year around home as required. The shore line is solid with a great mix of sand and gradual all the way out. The sale of this cabin includes a dock and boat lift. Realtor note: This property is on leased Tribal Land and can only be purchased by a Leech Lake Band of Ojibwe member

**Additional Details:**

Year Built	2015
Lot Acres	1
Lot Dimensions	Leased land
Garage Stalls	1
School District	118
Taxes	(unreported)
Taxes with Assessments	(unreported)
Tax Year	2024

**Additional Features:**

**Fuel:** Electric, Propane **Heat:** Baseboard, Forced Air

**Driving Directions:**

From Cass lake Hwy 371 and Hwy 2. East on Hwy 2 to Bean, S on Co 8 10 Miles, Right Onto Co 73 about 5 miles stay right onto co 136 continue to Sugar Pt home is on Right



Listed By:  
218 Real Estate

Affinity Real Estate Inc. participates in the Regional Multiple Listing Service of Minnesota, Inc Broker Reciprocity (sm) program, allowing us to display other broker's listings on our website. All properties are subject to prior sale, change or withdrawal.



**Call Affinity Real Estate**

**218-237-3333**

**info@affinityrealestate.com**



**Affinity Real Estate - 600 Park Avenue South - Park Rapids MN 56470**





website: [www.AffinityRealEstate.com](http://www.AffinityRealEstate.com) | email: [info@affinityrealestate.com](mailto:info@affinityrealestate.com) | office: 218-237-3333 | fax: 218-237-3377

**Affinity**  
REAL ESTATE INC

**\$119,000**  
MLS 6557214 Lake Home  
10769 Sugar Point Drive  
Cass Lake MN 56633





website: [www.AffinityRealEstate.com](http://www.AffinityRealEstate.com) | email: [info@affinityrealestate.com](mailto:info@affinityrealestate.com) | office: 218-237-3333 | fax: 218-237-3377

**Affinity**  
REAL ESTATE INC

**\$119,000**  
MLS 6557214 Lake Home  
10769 Sugar Point Drive  
Cass Lake MN 56633





website: [www.AffinityRealEstate.com](http://www.AffinityRealEstate.com) | email: [info@affinityrealestate.com](mailto:info@affinityrealestate.com) | office: 218-237-3333 | fax: 218-237-3377

**Affinity**  
REAL ESTATE INC

**\$119,000**  
MLS 6557214 Lake Home  
10769 Sugar Point Drive  
Cass Lake MN 56633



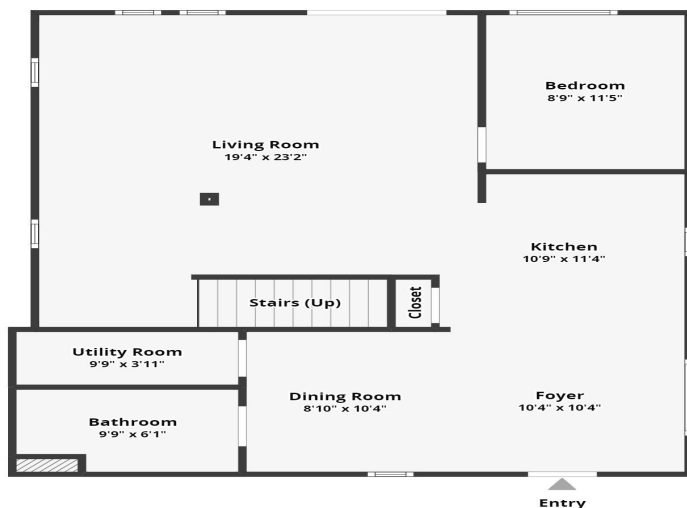


website: [www.AffinityRealEstate.com](http://www.AffinityRealEstate.com) | email: [info@affinityrealestate.com](mailto:info@affinityrealestate.com) | office: 218-237-3333 | fax: 218-237-3377

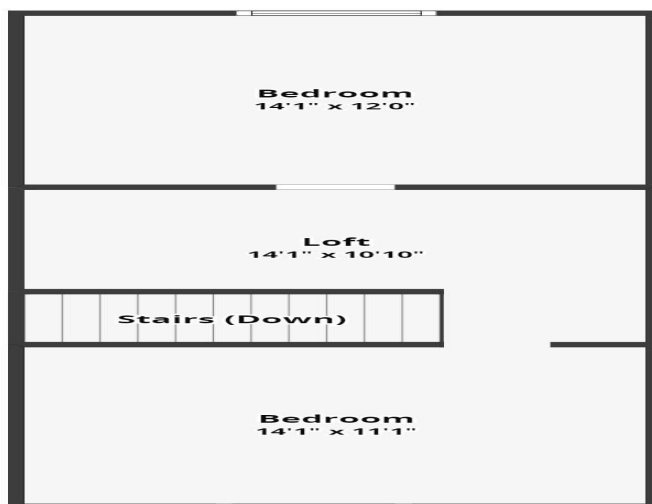
**Affinity**  
REAL ESTATE INC

**\$119,000**  
MLS 6557214 Lake Home  
10769 Sugar Point Drive  
Cass Lake MN 56633





All dimensions are approximate and subject to independent verification.



All dimensions are approximate and subject to independent verification.

website: [www.AffinityRealEstate.com](http://www.AffinityRealEstate.com) | email: [info@affinityrealestate.com](mailto:info@affinityrealestate.com) | office: 218-237-3333 | fax: 218-237-3377



**\$119,000**

MLS 6557214 Lake Home  
10769 Sugar Point Drive  
Cass Lake MN 56633