



MLS 6557407 Residential

\$319,900

2,752 sq ft
4 bedrooms
2 baths

7857 Power Dam Road
Bemidji MN 56601

Status: Active

Description:

4BR/2BA with walk-out basement and dedicated office, vaulted ceilings, propane fireplace in the large sunroom, and in-floor hot water heat. Also has a large, insulated, attached garage/workshop with high ceilings and wood stove heat. Private fenced 4 acres with apple trees, garden spaces, pole building and lean-to. Green house stays for the garden enthusiast.

Additional Details:

Year Built	2000
Lot Acres	4.07
Lot Dimensions	330x500
Garage Stalls	2
School District	31
Taxes	\$2,928
Taxes with Assessments	\$2,928
Tax Year	2023

Additional Features:

Basement: Daylight/Lookout Windows, Finished, Walkout **Fuel:** Electric, Propane **Garage:** 2 **Heat:** Baseboard, Boiler, Dual, Fireplace(s), Radiant Floor **Sewer:** Private Sewer, Septic System Compliant - Yes, Tank with Drainage Field **Water:** Submersible - 4 Inch, Drilled, Private **Air Conditioning:** None

Driving Directions:

South on Paul Bunyan Dr, left on 1st St SE, left on Lake Ave, right on Power Dam Rd 3 miles to #7857 on left.



Listed By:
CENTURY 21 Dickinson Realtors

Affinity Real Estate Inc. participates in the Regional Multiple Listing Service of Minnesota, Inc Broker Reciprocity (sm) program, allowing us to display other broker's listings on our website. All properties are subject to prior sale, change or withdrawal.



Call Affinity Real Estate

218-237-3333

info@affinityrealestate.com



Affinity Real Estate - 600 Park Avenue South - Park Rapids MN 56470



website: www.AffinityRealEstate.com | email: info@affinityrealestate.com | office: 218-237-3333 | fax:218-237-3377

Affinity
REAL ESTATE INC

\$319,900
MLS 6557407 Residential
7857 Power Dam Road
Bemidji MN 56601



website: www.AffinityRealEstate.com | email: info@affinityrealestate.com | office: 218-237-3333 | fax:218-237-3377

Affinity
REAL ESTATE INC

\$319,900
MLS 6557407 Residential
7857 Power Dam Road
Bemidji MN 56601



website: www.AffinityRealEstate.com | email: info@affinityrealestate.com | office: 218-237-3333 | fax:218-237-3377



\$319,900
MLS 6557407 Residential
7857 Power Dam Road
Bemidji MN 56601



website: www.AffinityRealEstate.com | email: info@affinityrealestate.com | office: 218-237-3333 | fax: 218-237-3377

Affinity
REAL ESTATE INC

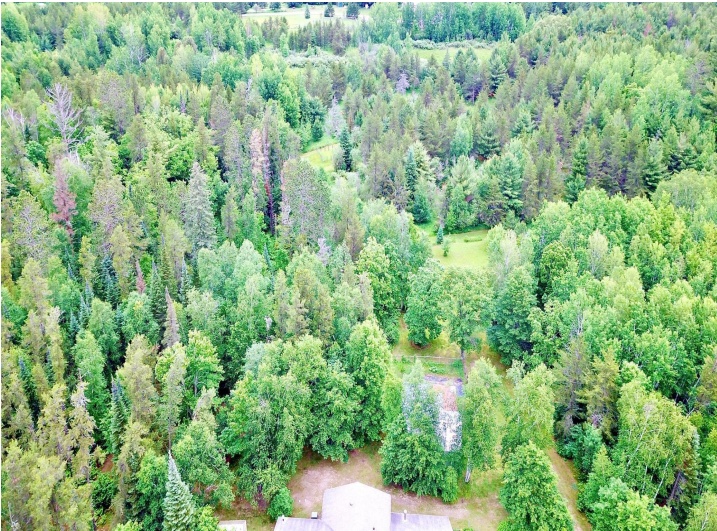
\$319,900
MLS 6557407 Residential
7857 Power Dam Road
Bemidji MN 56601



website: www.AffinityRealEstate.com | email: info@affinityrealestate.com | office: 218-237-3333 | fax: 218-237-3377

Affinity
REAL ESTATE INC

\$319,900
MLS 6557407 Residential
7857 Power Dam Road
Bemidji MN 56601



website: www.AffinityRealEstate.com | email: info@affinityrealestate.com | office: 218-237-3333 | fax:218-237-3377

Affinity
REAL ESTATE INC

\$319,900
MLS 6557407 Residential
7857 Power Dam Road
Bemidji MN 56601



website: www.AffinityRealEstate.com | email: info@affinityrealestate.com | office: 218-237-3333 | fax:218-237-3377



\$319,900
MLS 6557407 Residential
7857 Power Dam Road
Bemidji MN 56601