



MLS 6557465 Residential

\$267,000

896 sq ft
1 bedrooms
1 baths

38151 County Highway 35
Dent MN 56528

Status: Pending

Description:

Rural Dent - Nestled on a serene 9.25-acre parcel, this charming 1-bedroom/1 bathroom home offers a unique blend of tranquility and opportunity. Property includes an oversized barn with a steel roof, a chicken coop, a detached garage & a 28x40 heated shop! This retreat promises a rare chance to own a piece of countryside paradise with close proximity to Dead Lake. (the boat landing is within walking distance) Discover the endless possibilities awaiting you. Agent related to sellers.

Additional Details:

Year Built	1980
Lot Acres	9.25
Lot Dimensions	342x1024x520x932
Garage Stalls	2
School District	549
Taxes	\$1,078
Taxes with Assessments	\$1,078
Tax Year	2024

Additional Features:

Basement: Crawl Space **Fuel:** Electric **Garage:** 2 **Heat:** Radiant **Sewer:** Private Sewer, Septic System Compliant - Yes **Water:** Drilled, Private, Well **Air Conditioning:** Ductless Mini-Split

Driving Directions:

38151 Co Hwy 35, Dent



Listed By:
Coldwell Banker Preferred Partners

Affinity Real Estate Inc. participates in the Regional Multiple Listing Service of Minnesota, Inc Broker Reciprocity (sm) program, allowing us to display other broker's listings on our website. All properties are subject to prior sale, change or withdrawal.



Call Affinity Real Estate

218-237-3333

info@affinityrealestate.com



Affinity Real Estate - 600 Park Avenue South - Park Rapids MN 56470



website: www.AffinityRealEstate.com | email: info@affinityrealestate.com | office: 218-237-3333 | fax: 218-237-3377



\$267,000
 MLS 6557465 Residential
 38151 County Highway 35
 Dent MN 56528



website: www.AffinityRealEstate.com | email: info@affinityrealestate.com | office: 218-237-3333 | fax: 218-237-3377



\$267,000

MLS 6557465 Residential
38151 County Highway 35
Dent MN 56528



website: www.AffinityRealEstate.com | email: info@affinityrealestate.com | office: 218-237-3333 | fax: 218-237-3377

Affinity
REAL ESTATE INC

\$267,000

MLS 6557465 Residential
38151 County Highway 35
Dent MN 56528

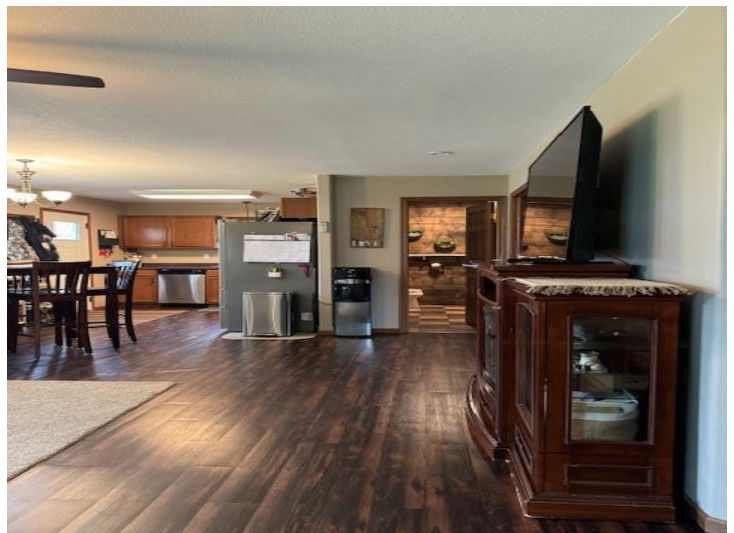


website: www.AffinityRealEstate.com | email: info@affinityrealestate.com | office: 218-237-3333 | fax: 218-237-3377

Affinity
REAL ESTATE INC

\$267,000

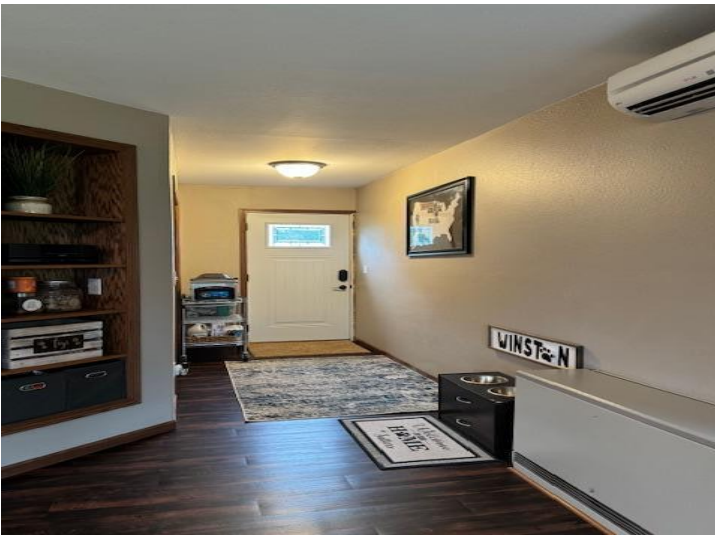
MLS 6557465 Residential
38151 County Highway 35
Dent MN 56528



website: www.AffinityRealEstate.com | email: info@affinityrealestate.com | office: 218-237-3333 | fax: 218-237-3377



\$267,000
 MLS 6557465 Residential
 38151 County Highway 35
 Dent MN 56528



website: www.AffinityRealEstate.com | email: info@affinityrealestate.com | office: 218-237-3333 | fax: 218-237-3377

Affinity
REAL ESTATE INC

\$267,000

MLS 6557465 Residential
38151 County Highway 35
Dent MN 56528



website: www.AffinityRealEstate.com | email: info@affinityrealestate.com | office: 218-237-3333 | fax: 218-237-3377



\$267,000
 MLS 6557465 Residential
 38151 County Highway 35
 Dent MN 56528