



MLS 6558610 Lake Home

\$515,000

1,656 sq ft
3 bedrooms
2 baths

14442 Christopher Trail
Park Rapids MN 56470

Waterfront: Big Stony

Status: Pending

Description:

Wonderful year-round cottage on highly sought after Big Stony Lake. This beautiful property includes sand beach and shoreline, gentle elevation, picturesque cabin and grounds, unbelievable lake and close to everything!

Additional Details:

Year Built	1984
Lot Acres	1.27
Lot Dimensions	152 x 427 x 125 x 436
Garage Stalls	2
School District	309
Taxes	\$2,062
Taxes with Assessments	\$2,272
Tax Year	2024

Additional Features:

Fuel: Electric, Propane **Heat:** Forced Air, Heat Pump

Driving Directions:

From Park Rapids go West on State Hwy 34 to Dorset Corner, turn south on Cty Rd 11. Turn East onto 140th Ave, turn North onto Christopher Trail and proceed to property on your left.



Listed By:
Affinity Real Estate Inc.

Affinity Real Estate Inc. participates in the Regional Multiple Listing Service of Minnesota, Inc Broker Reciprocity (sm) program, allowing us to display other broker's listings on our website. All properties are subject to prior sale, change or withdrawal.



Call Affinity Real Estate

218-237-3333

info@affinityrealestate.com



Affinity Real Estate - 600 Park Avenue South - Park Rapids MN 56470



website: www.AffinityRealEstate.com | email: info@affinityrealestate.com | office: 218-237-3333 | fax: 218-237-3377

Affinity
REAL ESTATE INC

\$515,000
MLS 6558610 Lake Home
14442 Christopher Trail
Park Rapids MN 56470



website: www.AffinityRealEstate.com | email: info@affinityrealestate.com | office: 218-237-3333 | fax: 218-237-3377

Affinity
REAL ESTATE INC

\$515,000
MLS 6558610 Lake Home
14442 Christopher Trail
Park Rapids MN 56470



website: www.AffinityRealEstate.com | email: info@affinityrealestate.com | office: 218-237-3333 | fax:218-237-3377

Affinity
REAL ESTATE INC

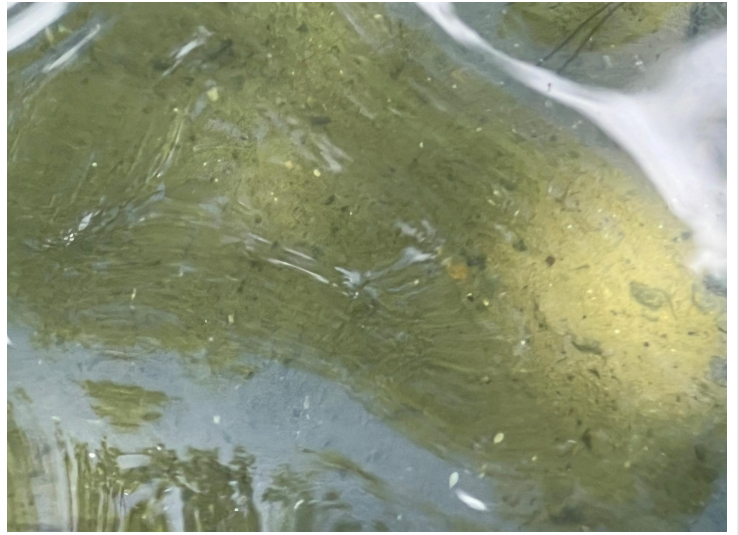
\$515,000
MLS 6558610 Lake Home
14442 Christopher Trail
Park Rapids MN 56470



website: www.AffinityRealEstate.com | email: info@affinityrealestate.com | office: 218-237-3333 | fax:218-237-3377



\$515,000
MLS 6558610 Lake Home
14442 Christopher Trail
Park Rapids MN 56470



website: www.AffinityRealEstate.com | email: info@affinityrealestate.com | office: 218-237-3333 | fax:218-237-3377



\$515,000
MLS 6558610 Lake Home
14442 Christopher Trail
Park Rapids MN 56470



website: www.AffinityRealEstate.com | email: info@affinityrealestate.com | office: 218-237-3333 | fax:218-237-3377



\$515,000
MLS 6558610 Lake Home
14442 Christopher Trail
Park Rapids MN 56470