



MLS 6558647 Land

\$139,000

41.56 Acres
Raw Land

xxx 555th Ave
Deer Creek MN 56527

Status: Active

Description:

Premier hunting land with 41.56 acres. Two newer deer stands on the property stay. This property is ideal for the avid deer hunter!

Additional Details:

Lot Acres	41.56
Lot Dimensions	41.56 ac
School District	2155
Taxes	\$464
Taxes with Assessments	\$464
Tax Year	2024

Additional Features:

Driving Directions:

From the intersection of Hwy 210 and Hwy 29 go north 3 miles then turn left (West) on Cty 140 for one mile then North on 555th to the property on the West side of the the road.



Listed By:
Weichert RE - Paulson Land Co

Affinity Real Estate Inc. participates in the Regional Multiple Listing Service of Minnesota, Inc Broker Reciprocity (sm) program, allowing us to display other broker's listings on our website. All properties are subject to prior sale, change or withdrawal.



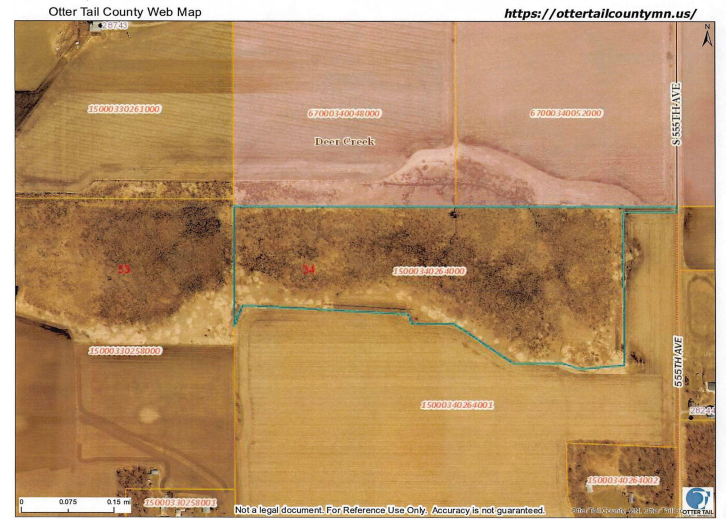
Call Affinity Real Estate

218-237-3333

info@affinityrealestate.com



Affinity Real Estate - 600 Park Avenue South - Park Rapids MN 56470



website: www.AffinityRealEstate.com | email: info@affinityrealestate.com | office: 218-237-3333 | fax: 218-237-3377



\$139,000
 MLS 6558647 Land
 xxx 555th Ave
 Deer Creek MN 56527