

MLS 6558951 Land

\$68,500

10 Acres
Raw Land

Tbd* 4th Street
Backus MN 56435

Status: Pending

Description:

Pine River Twp. – Prime 10 acre parcel of all high ground with scattered plantation pine and 330’ excellent road frontage and multiple build sites.

Additional Details:

Lot Acres	10
Lot Dimensions	330x1320
School District	2174
Taxes	\$126
Taxes with Assessments	\$126
Tax Year	2024

Additional Features:

Driving Directions:

6 1/2 miles N. of Pine River on #371 to a right on 4th St. SW, then 2.25 miles east to sign on right.



Listed By:
Heartland Real Estate

Affinity Real Estate Inc. participates in the Regional Multiple Listing Service of Minnesota, Inc Broker Reciprocity (sm) program, allowing us to display other broker’s listings on our website. All properties are subject to prior sale, change or withdrawal.



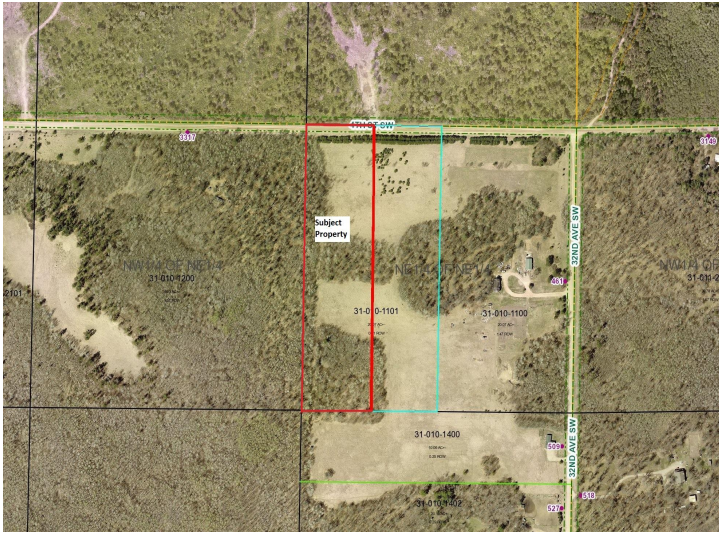
Call Affinity Real Estate

218-237-3333

info@affinityrealestate.com



Affinity Real Estate - 600 Park Avenue South - Park Rapids MN 56470



website: www.AffinityRealEstate.com | email: info@affinityrealestate.com | office: 218-237-3333 | fax:218-237-3377



\$68,500
MLS 6558951 Land
Tbd* 4th Street
Backus MN 56435