



MLS 6560102 Lake Home

**\$899,900**

2,657 sq ft  
4 bedrooms  
3 baths

8087 Pine Point Road  
Nisswa MN 56468

Waterfront: Upper Gull

Status: Pending

**Description:**

Large townhome with lots of storage - Boasting 4 bedrooms and 3 bathrooms, 4 season sunroom to capture lake living at its best, a great deck area for your summer BBQs, updated kitchen with high end appliances ,in floor heat in the lower level walk out basement with outdoor patio overlooking the lake- 2 car attached garage and a 4 car detached garage/shop (46x26, 1196 sq feet) heated with an unfinished bonus room above the garage. A landscaped path down to the lake makes bring coolers and boating/ beach items a breeze! Move-in ready with high-quality finishes throughout. A must-see property, its ample size and storage make it a rare gem to find on the Gull Lake chain.

**Additional Details:**

Year Built	2003
Lot Acres	0.01
Lot Dimensions	39x70
Garage Stalls	6
School District	181
Taxes	\$6,068
Taxes with Assessments	\$6,134
Tax Year	2024

**Additional Features:**

**Basement:** Finished, Full, Walkout **Fuel:** Natural Gas **Garage:** 6 **Heat:** Forced Air **Sewer:** Private Sewer, Septic System Compliant - Yes  
**Water:** Well **Air Conditioning:** Central Air

**Driving Directions:**

N on MN 371 to left onto CR Rd 77 (in Nisswa) to Interlachen Rd to Pine Point Rd

 Listed By:  
Positive Realty

Affinity Real Estate Inc. participates in the Regional Multiple Listing Service of Minnesota, Inc Broker Reciprocity (sm) program, allowing us to display other broker's listings on our website. All properties are subject to prior sale, change or withdrawal.



**Call Affinity Real Estate**  
**218-237-3333**  
**info@affinityrealestate.com**



**Affinity Real Estate - 600 Park Avenue South - Park Rapids MN 56470**



website: [www.AffinityRealEstate.com](http://www.AffinityRealEstate.com) | email: [info@affinityrealestate.com](mailto:info@affinityrealestate.com) | office: 218-237-3333 | fax:218-237-3377

**Affinity**  
REAL ESTATE INC

**\$899,900**  
MLS 6560102 Lake Home  
8087 Pine Point Road  
Nisswa MN 56468



website: [www.AffinityRealEstate.com](http://www.AffinityRealEstate.com) | email: [info@affinityrealestate.com](mailto:info@affinityrealestate.com) | office: 218-237-3333 | fax:218-237-3377

**Affinity**  
REAL ESTATE INC

**\$899,900**  
MLS 6560102 Lake Home  
8087 Pine Point Road  
Nisswa MN 56468



website: [www.AffinityRealEstate.com](http://www.AffinityRealEstate.com) | email: [info@affinityrealestate.com](mailto:info@affinityrealestate.com) | office: 218-237-3333 | fax: 218-237-3377

**Affinity**  
REAL ESTATE INC

**\$899,900**  
MLS 6560102 Lake Home  
8087 Pine Point Road  
Nisswa MN 56468



website: [www.AffinityRealEstate.com](http://www.AffinityRealEstate.com) | email: [info@affinityrealestate.com](mailto:info@affinityrealestate.com) | office: 218-237-3333 | fax: 218-237-3377

**Affinity**  
REAL ESTATE INC

**\$899,900**  
MLS 6560102 Lake Home  
8087 Pine Point Road  
Nisswa MN 56468



website: [www.AffinityRealEstate.com](http://www.AffinityRealEstate.com) | email: [info@affinityrealestate.com](mailto:info@affinityrealestate.com) | office: 218-237-3333 | fax:218-237-3377

**Affinity**  
REAL ESTATE INC

**\$899,900**  
MLS 6560102 Lake Home  
8087 Pine Point Road  
Nisswa MN 56468



website: [www.AffinityRealEstate.com](http://www.AffinityRealEstate.com) | email: [info@affinityrealestate.com](mailto:info@affinityrealestate.com) | office: 218-237-3333 | fax:218-237-3377

**Affinity**  
REAL ESTATE INC

**\$899,900**  
MLS 6560102 Lake Home  
8087 Pine Point Road  
Nisswa MN 56468



website: [www.AffinityRealEstate.com](http://www.AffinityRealEstate.com) | email: [info@affinityrealestate.com](mailto:info@affinityrealestate.com) | office: 218-237-3333 | fax: 218-237-3377

**Affinity**  
REAL ESTATE INC

**\$899,900**  
MLS 6560102 Lake Home  
8087 Pine Point Road  
Nisswa MN 56468





website: [www.AffinityRealEstate.com](http://www.AffinityRealEstate.com) | email: [info@affinityrealestate.com](mailto:info@affinityrealestate.com) | office: 218-237-3333 | fax: 218-237-3377

**Affinity**  
REAL ESTATE INC

**\$899,900**  
MLS 6560102 Lake Home  
8087 Pine Point Road  
Nisswa MN 56468



website: [www.AffinityRealEstate.com](http://www.AffinityRealEstate.com) | email: [info@affinityrealestate.com](mailto:info@affinityrealestate.com) | office: 218-237-3333 | fax:218-237-3377

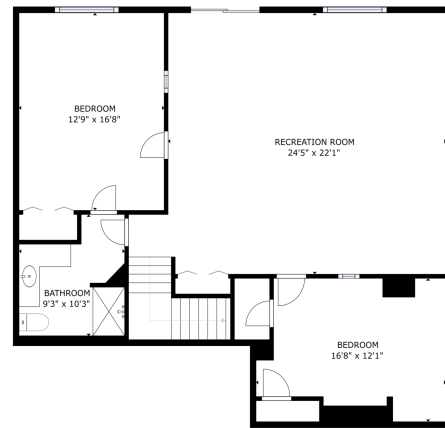


**\$899,900**  
MLS 6560102 Lake Home  
8087 Pine Point Road  
Nisswa MN 56468



FLOOR 1  
ROOM DIMENSIONS AREA  
 FLOOR 1 1348 SQ. FT. FLOOR 2 1088 SQ. FT.  
 TOTAL 2436 SQ. FT.  
 ROOMS AND DIMENSIONS ARE APPROXIMATE. ACTUAL MAY VARY.

Matterport



FLOOR 2  
ROOM DIMENSIONS AREA  
 FLOOR 2 1088 SQ. FT. FLOOR 2 1088 SQ. FT.  
 TOTAL 2436 SQ. FT.  
 ROOMS AND DIMENSIONS ARE APPROXIMATE. ACTUAL MAY VARY.

Matterport

website: [www.AffinityRealEstate.com](http://www.AffinityRealEstate.com) | email: [info@affinityrealestate.com](mailto:info@affinityrealestate.com) | office: 218-237-3333 | fax: 218-237-3377



**\$899,900**  
 MLS 6560102 Lake Home  
 8087 Pine Point Road  
 Nisswa MN 56468



website: [www.AffinityRealEstate.com](http://www.AffinityRealEstate.com) | email: [info@affinityrealestate.com](mailto:info@affinityrealestate.com) | office: 218-237-3333 | fax:218-237-3377

**Affinity**  
REAL ESTATE INC

**\$899,900**  
MLS 6560102 Lake Home  
8087 Pine Point Road  
Nisswa MN 56468



website: [www.AffinityRealEstate.com](http://www.AffinityRealEstate.com) | email: [info@affinityrealestate.com](mailto:info@affinityrealestate.com) | office: 218-237-3333 | fax:218-237-3377



**\$899,900**  
MLS 6560102 Lake Home  
8087 Pine Point Road  
Nisswa MN 56468



website: [www.AffinityRealEstate.com](http://www.AffinityRealEstate.com) | email: [info@affinityrealestate.com](mailto:info@affinityrealestate.com) | office: 218-237-3333 | fax:218-237-3377



**\$899,900**  
MLS 6560102 Lake Home  
8087 Pine Point Road  
Nisswa MN 56468