



MLS 6560119 Lake Home

\$749,900

2,784 sq ft
4 bedrooms
5 baths

6991 Shadow Lane
Brainerd MN 56401

Waterfront: Little Hubert

Status: Hold

Description:

Welcome to Little Hubert! Four-bedroom, five-bathroom, to be built home with 3,500 sq ft. The home will feature a large kitchen with granite counter tops, stainless-steel appliances, wood flooring, large primary bedroom on the upper level, ensuite with a walk-in shower and spacious closet. Open concept from kitchen to great room with vaulted ceilings and a fireplace. Both upper and lower levels will feature a guest ensuite as well, great for having family and friends stay at the lake! Two stall heated/insulated garage with floor drains. You will love the stunning southern views from your lake side deck. Great location with being minutes from downtown Nisswa, fine and casual dining, and several pristine golf courses.

Additional Details:

Year Built	2024
Lot Acres	0.65
Lot Dimensions	45x613x57x646
Garage Stalls	2
School District	181
Taxes	\$458
Taxes with Assessments	\$458
Tax Year	2023

Additional Features:

Fuel: Natural Gas **Heat:** Forced Air

Driving Directions:

Drive north on highway 371 from Brainerd. Turn right on Nashway Road, turn left of E Lake Hubert Drive, Then take a right on Shadow Lane, stop at 6991.



Listed By:
eXp Realty

Affinity Real Estate Inc. participates in the Regional Multiple Listing Service of Minnesota, Inc Broker Reciprocity (sm) program, allowing us to display other broker's listings on our website. All properties are subject to prior sale, change or withdrawal.



Call Affinity Real Estate

218-237-3333

info@affinityrealestate.com



Affinity Real Estate - 600 Park Avenue South - Park Rapids MN 56470



website: www.AffinityRealEstate.com | email: info@affinityrealestate.com | office: 218-237-3333 | fax: 218-237-3377



\$749,900
 MLS 6560119 Lake Home
 6991 Shadow Lane
 Brainerd MN 56401



website: www.AffinityRealEstate.com | email: info@affinityrealestate.com | office: 218-237-3333 | fax: 218-237-3377

Affinity
REAL ESTATE INC

\$749,900
MLS 6560119 Lake Home
6991 Shadow Lane
Brainerd MN 56401



website: www.AffinityRealEstate.com | email: info@affinityrealestate.com | office: 218-237-3333 | fax: 218-237-3377



\$749,900
 MLS 6560119 Lake Home
 6991 Shadow Lane
 Brainerd MN 56401



website: www.AffinityRealEstate.com | email: info@affinityrealestate.com | office: 218-237-3333 | fax: 218-237-3377

Affinity
REAL ESTATE INC

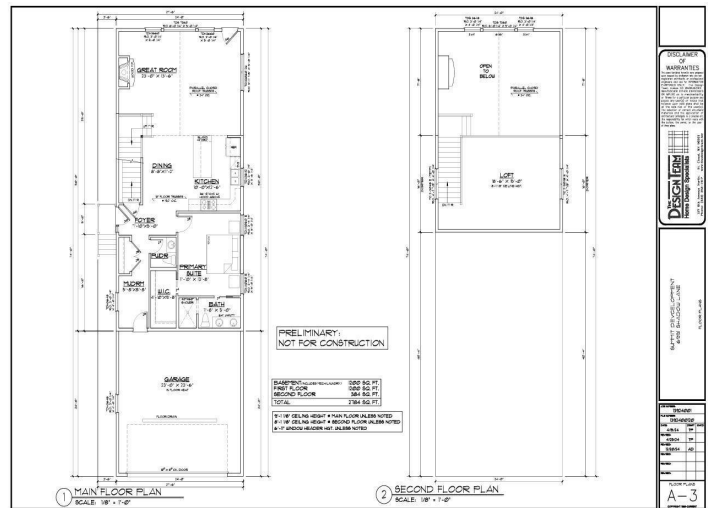
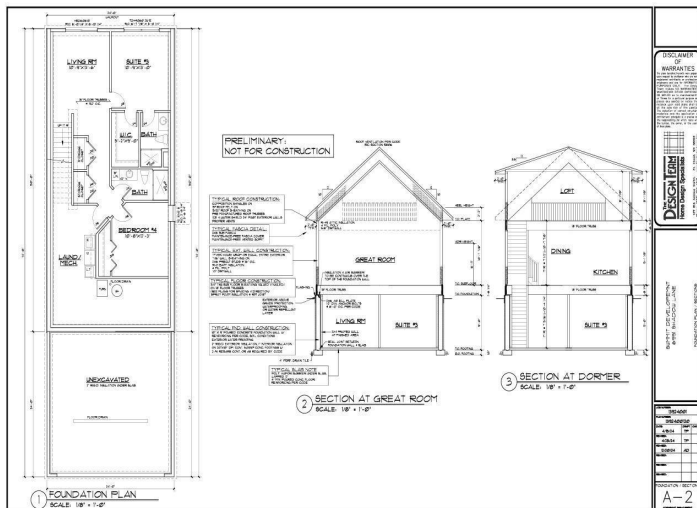
\$749,900
MLS 6560119 Lake Home
6991 Shadow Lane
Brainerd MN 56401



website: www.AffinityRealEstate.com | email: info@affinityrealestate.com | office: 218-237-3333 | fax: 218-237-3377

Affinity
REAL ESTATE INC

\$749,900
MLS 6560119 Lake Home
6991 Shadow Lane
Brainerd MN 56401



website: www.AffinityRealEstate.com | email: info@affinityrealestate.com | office: 218-237-3333 | fax: 218-237-3377

Affinity
REAL ESTATE INC

\$749,900
MLS 6560119 Lake Home
6991 Shadow Lane
Brainerd MN 56401