



MLS 6560215 Residential

\$274,900

3,072 sq ft
5 bedrooms
3 baths

3502 Cedar Lane
Bemidji MN 56601

Status: Hold

Description:

Introducing an exceptional 5-bedroom home nestled in a prime in-town location. Each bedroom features a convenient walk-in closet, the primary bedroom includes an ensuite half bath. Multiple living areas accommodate various lifestyles and activities, while the well-equipped kitchen serves as the heart of the home, ideal for everyday meals and entertaining. Situated on a fully fenced, generously sized corner lot, this property offers both privacy and space for outdoor activities and gatherings.

Additional Details:

Year Built	1977
Lot Acres	0.37
Lot Dimensions	90x166
Garage Stalls	2
School District	31
Taxes	\$3,474
Taxes with Assessments	\$3,474
Tax Year	2024

Additional Features:

Basement: Finished, Full **Fuel:** Natural Gas **Garage:** 2 **Heat:** Forced Air **Sewer:** City Sewer/Connected **Water:** City Water/Connected **Air Conditioning:** Central Air

Driving Directions:

North of Irvine Ave. Turn left on of 35th St NW.
House is on the right hand corner



Listed By:
Coldwell Banker Crown Realtors

Affinity Real Estate Inc. participates in the Regional Multiple Listing Service of Minnesota, Inc Broker Reciprocity (sm) program, allowing us to display other broker's listings on our website. All properties are subject to prior sale, change or withdrawal.



Call Affinity Real Estate

218-237-3333

info@affinityrealestate.com



Affinity Real Estate - 600 Park Avenue South - Park Rapids MN 56470



website: www.AffinityRealEstate.com | email: info@affinityrealestate.com | office: 218-237-3333 | fax:218-237-3377



\$274,900
MLS 6560215 Residential
3502 Cedar Lane
Bemidji MN 56601



website: www.AffinityRealEstate.com | email: info@affinityrealestate.com | office: 218-237-3333 | fax:218-237-3377

Affinity
REAL ESTATE INC

\$274,900
MLS 6560215 Residential
3502 Cedar Lane
Bemidji MN 56601



website: www.AffinityRealEstate.com | email: info@affinityrealestate.com | office: 218-237-3333 | fax:218-237-3377

Affinity
REAL ESTATE INC

\$274,900
MLS 6560215 Residential
3502 Cedar Lane
Bemidji MN 56601



website: www.AffinityRealEstate.com | email: info@affinityrealestate.com | office: 218-237-3333 | fax:218-237-3377



\$274,900
MLS 6560215 Residential
3502 Cedar Lane
Bemidji MN 56601



website: www.AffinityRealEstate.com | email: info@affinityrealestate.com | office: 218-237-3333 | fax:218-237-3377

Affinity
REAL ESTATE INC

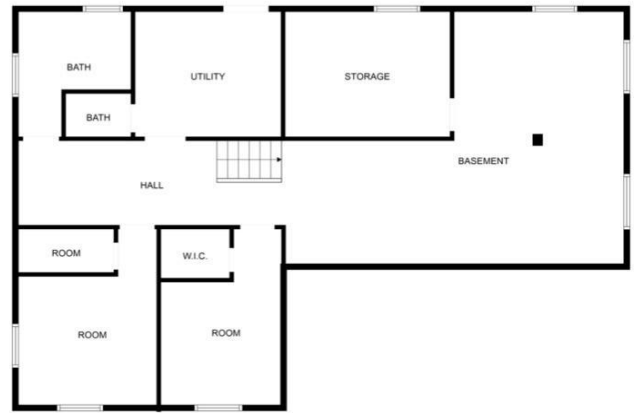
\$274,900
MLS 6560215 Residential
3502 Cedar Lane
Bemidji MN 56601



website: www.AffinityRealEstate.com | email: info@affinityrealestate.com | office: 218-237-3333 | fax:218-237-3377

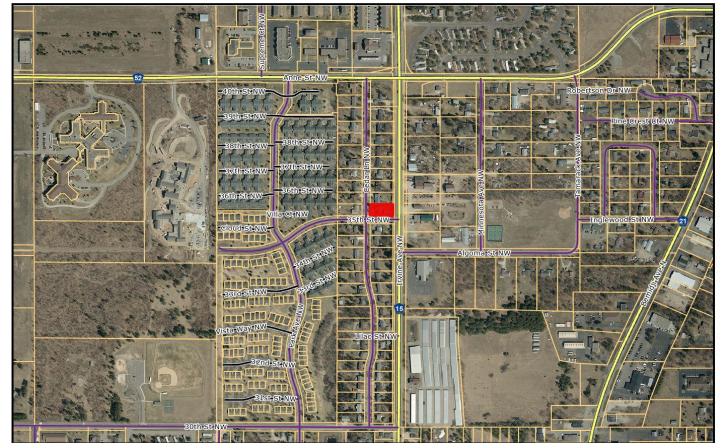


\$274,900
MLS 6560215 Residential
3502 Cedar Lane
Bemidji MN 56601



FLOOR PLAN CREATED BY CURBASA APP MEASUREMENTS DEEMED HIGHLY RELIABLE BUT NOT GUARANTEED.

FLOOR PLAN CREATED BY CURBASA APP MEASUREMENTS DEEMED HIGHLY RELIABLE BUT NOT GUARANTEED.



3502 Cedar Ln NW
 Beltrami County Minnesota
 1:528 Date: 6/28/2024
 This map is not a substitute for accurate field surveys or for locating actual property lines and any adjacent features.

3502 Cedar Ln NW
 Beltrami County Minnesota
 1:8.451 Date: 6/28/2024
 This map is not a substitute for accurate field surveys or for locating actual property lines and any adjacent features.

website: www.AffinityRealEstate.com | email: info@affinityrealestate.com | office: 218-237-3333 | fax:218-237-3377



\$274,900
 MLS 6560215 Residential
 3502 Cedar Lane
 Bemidji MN 56601