



MLS 6560863 Commercial

\$600,000

815 Beltrami Avenue
Bemidji MN 56601

Status: Active

Description:

Former Central School for sale; solid, well maintained building with over 42,000sf of space available on a full city block just North of downtown Bemidji. Full size gym, commercial kitchen downstairs, on site parking, green space, and a playground on site. Updates include: new boiler system in 2007, new roof(s) 2009 and 2011. Lots of possibilities. Deed Restrictions: NO (pre)K-12 Schools/Education or Cannabis production or sales.

Additional Details:

Year Built	1959
Lot Acres	2.065
Lot Dimensions	300x300
School District	1386
Taxes	\$172
Taxes with Assessments	\$172
Tax Year	2023

Additional Features:

Fuel: Array **Heat:** Boiler **Sewer:** City Sewer/Connected **Water:** City Water/Connected **Air Conditioning:** None

Driving Directions:

From downtown Bemidji, North Bemidji Avenue N, L



Listed By:
Lake-N-Woods Realty

Affinity Real Estate Inc. participates in the Regional Multiple Listing Service of Minnesota, Inc Broker Reciprocity (sm) program, allowing us to display other broker's listings on our website. All properties are subject to prior sale, change or withdrawal.



Call Affinity Real Estate

218-237-3333

info@affinityrealestate.com



Affinity Real Estate - 600 Park Avenue South - Park Rapids MN 56470



website: www.AffinityRealEstate.com | email: info@affinityrealestate.com | office: 218-237-3333 | fax: 218-237-3377

Affinity
REAL ESTATE INC

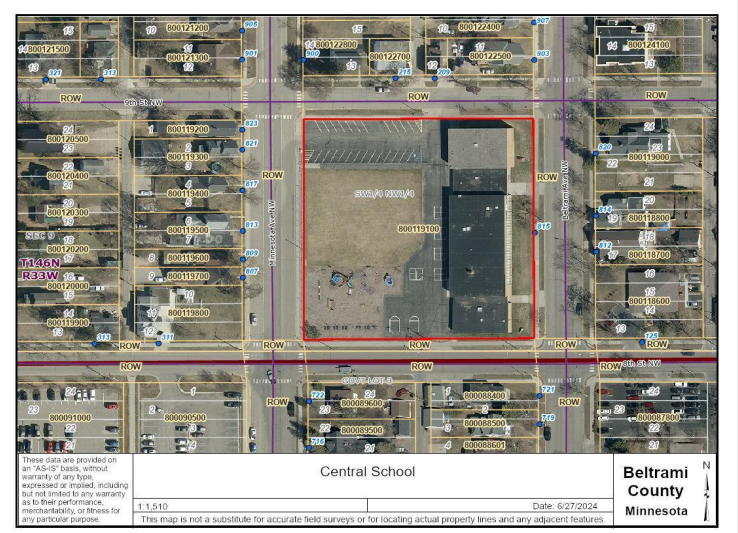
\$600,000
MLS 6560863 Commercial
815 Beltrami Avenue
Bemidji MN 56601



website: www.AffinityRealEstate.com | email: info@affinityrealestate.com | office: 218-237-3333 | fax: 218-237-3377

Affinity
REAL ESTATE INC

\$600,000
MLS 6560863 Commercial
815 Beltrami Avenue
Bemidji MN 56601



website: www.AffinityRealEstate.com | email: info@affinityrealestate.com | office: 218-237-3333 | fax: 218-237-3377



\$600,000
MLS 6560863 Commercial
815 Beltrami Avenue
Bemidji MN 56601