



MLS 6561050 Residential

\$625,000

3,709 sq ft
4 bedrooms
4 baths

2224 40th Avenue
Pine River MN 56474

Status: Active

Description:

Discover the tranquility in this four bedroom four bath home resting on 12.11 located just minutes to Pine River. This 3709 finished square foot home offers unparalleled privacy frequently visited by deer, turkeys and much more. The main floor offers a spacious living room, spectacular four season room with skylights, kitchen with SS appliances, informal dining area, wood accents, foyer, 3/4 bath and laundry. On the upper level you will find the primary bedroom with a private primary suite with a jetted tub/ walk in shower, three additional bedrooms, office, full bath, family room with vaulted ceilings, gas fireplace and a fun loft for company. There is a room that is ready to go on the upper level for laundry. The home has in floor heat on the main floor and radiant heat on the upper level. The attached garage is plumbed for in floor heat. Pole building offers great storage with a partially heated shop and lean-to, the additional garage also offers great storage .Walking/ATV trails.

Additional Details:

Year Built	1999
Lot Acres	12.11
Lot Dimensions	396x1316x396x1316
Garage Stalls	7
School District	2174
Taxes	\$1,768
Taxes with Assessments	\$1,834
Tax Year	2024

Additional Features:

Basement: Slab **Fuel:** Electric, Propane **Garage:** 7 **Heat:** Boiler, Dual, Fireplace(s), Hot Water, Radiant Floor, Radiant **Sewer:** Mound Septic **Water:** Drilled **Air Conditioning:** None

Driving Directions:

From Pine River take County Road 2 west for 4.1 miles to right on 40th Avenue SW to the home .4 miles on the right.



Listed By:
Edina Realty, Inc.

Affinity Real Estate Inc. participates in the Regional Multiple Listing Service of Minnesota, Inc Broker Reciprocity (sm) program, allowing us to display other broker's listings on our website. All properties are subject to prior sale, change or withdrawal.



Call Affinity Real Estate

218-237-3333

info@affinityrealestate.com



Affinity Real Estate - 600 Park Avenue South - Park Rapids MN 56470



website: www.AffinityRealEstate.com | email: info@affinityrealestate.com | office: 218-237-3333 | fax: 218-237-3377

Affinity
REAL ESTATE INC

\$625,000
MLS 6561050 Residential
2224 40th Avenue
Pine River MN 56474



website: www.AffinityRealEstate.com | email: info@affinityrealestate.com | office: 218-237-3333 | fax:218-237-3377

Affinity
REAL ESTATE INC

\$625,000
MLS 6561050 Residential
2224 40th Avenue
Pine River MN 56474



website: www.AffinityRealEstate.com | email: info@affinityrealestate.com | office: 218-237-3333 | fax:218-237-3377



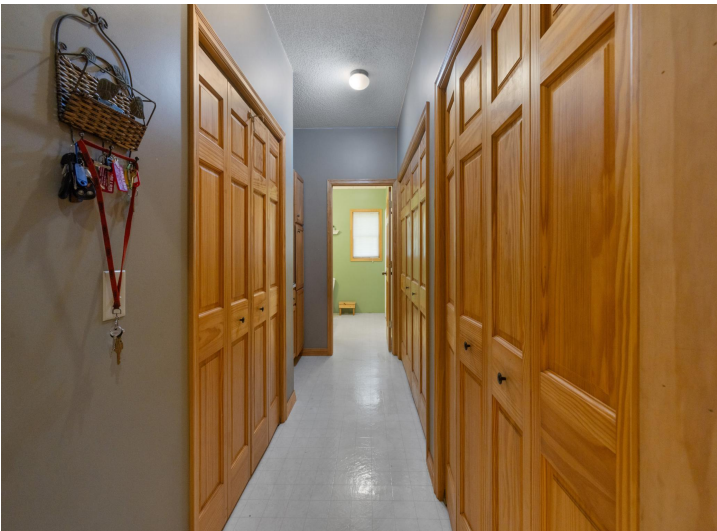
\$625,000
MLS 6561050 Residential
2224 40th Avenue
Pine River MN 56474



website: www.AffinityRealEstate.com | email: info@affinityrealestate.com | office: 218-237-3333 | fax: 218-237-3377

Affinity
REAL ESTATE INC

\$625,000
MLS 6561050 Residential
2224 40th Avenue
Pine River MN 56474



website: www.AffinityRealEstate.com | email: info@affinityrealestate.com | office: 218-237-3333 | fax:218-237-3377

Affinity
REAL ESTATE INC

\$625,000
MLS 6561050 Residential
2224 40th Avenue
Pine River MN 56474



website: www.AffinityRealEstate.com | email: info@affinityrealestate.com | office: 218-237-3333 | fax:218-237-3377

Affinity
REAL ESTATE INC

\$625,000
MLS 6561050 Residential
2224 40th Avenue
Pine River MN 56474



website: www.AffinityRealEstate.com | email: info@affinityrealestate.com | office: 218-237-3333 | fax: 218-237-3377

Affinity
REAL ESTATE INC

\$625,000
MLS 6561050 Residential
2224 40th Avenue
Pine River MN 56474



website: www.AffinityRealEstate.com | email: info@affinityrealestate.com | office: 218-237-3333 | fax:218-237-3377



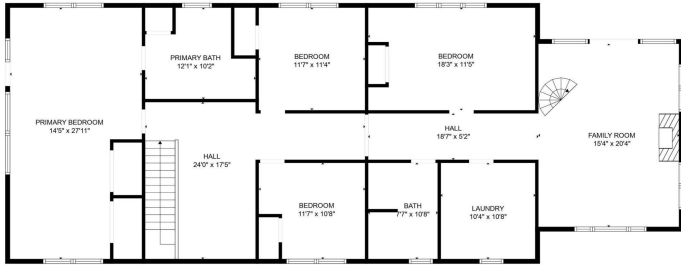
\$625,000
MLS 6561050 Residential
2224 40th Avenue
Pine River MN 56474



website: www.AffinityRealEstate.com | email: info@affinityrealestate.com | office: 218-237-3333 | fax:218-237-3377



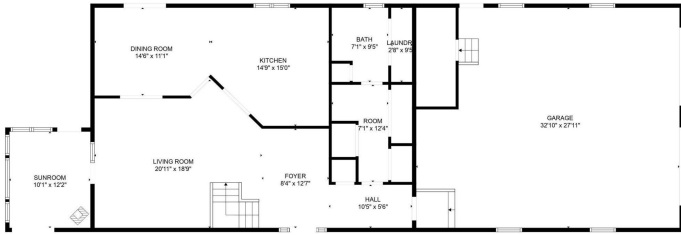
\$625,000
MLS 6561050 Residential
2224 40th Avenue
Pine River MN 56474



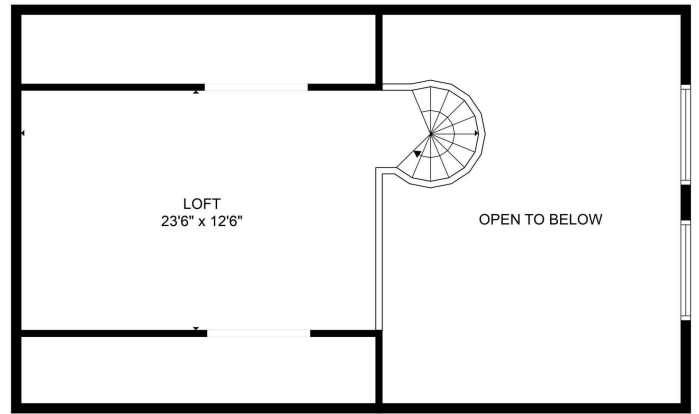
FLOOR PLAN CREATED BY CUBICASA APP. MEASUREMENTS DEEMED HIGHLY RELIABLE BUT NOT GUARANTEED.



FLOOR PLAN CREATED BY CUBICASA APP. MEASUREMENTS DEEMED HIGHLY RELIABLE BUT NOT GUARANTEED.



FLOOR PLAN CREATED BY CUBICASA APP. MEASUREMENTS DEEMED HIGHLY RELIABLE BUT NOT GUARANTEED.



FLOOR PLAN CREATED BY CUBICASA APP. MEASUREMENTS DEEMED HIGHLY RELIABLE BUT NOT GUARANTEED.



website: www.AffinityRealEstate.com | email: info@affinityrealestate.com | office: 218-237-3333 | fax: 218-237-3377



\$625,000
 MLS 6561050 Residential
 2224 40th Avenue
 Pine River MN 56474