



MLS 6561593 Lake Home

\$459,900

1,560 sq ft
2 bedrooms
2 baths

980 Pleasant Avenue
Akeley MN 56433

Waterfront: Eleventh Crow Wing

Status: Active

Description:

Don't miss this RARE chance to own 9.96 acres and 300' of hard sand frontage on beautiful 11th Crow Wing. This charming YEAR-ROUND home features hand-hewn log beams on the vaulted ceiling, open concept living area, real stone wood-burning fireplace, new flooring throughout the entire main level, 2 main floor bedrooms, and an updated full bath, main floor laundry, a walk-out lower level family room area that includes a ¾ bathroom and so much more! The land is absolutely DREAMY with groomed trails, massive pines, and other mixed mature trees, level sand frontage, abundant wildlife, spectacular views, and even a lakeside 50 and 30-amp hook-up, all within walking distance to town. Enjoy the aerial video!

Additional Details:

| | |
|------------------------|-------------|
| Year Built | 1973 |
| Lot Acres | 9.96 |
| Lot Dimensions | 200x656x200 |
| Garage Stalls | 1 |
| School District | 113 |
| Taxes | \$2,274 |
| Taxes with Assessments | \$2,484 |
| Tax Year | 2024 |

Additional Features:

Basement: Block, Daylight/Lookout Windows, Walkout **Fuel:** Electric, Propane **Garage:** 1 **Heat:** Baseboard, Forced Air, Fireplace(s)
Sewer: Private Sewer, Tank with Drainage Field **Water:** Drilled, Private **Air Conditioning:** None

Driving Directions:

From downtown Akeley, go east on Hwy 34 for 0.1 mile, turn left onto Pleasant Ave, and go 0.8 mile and other property will be on the right.



Listed By:
Bill Hansen Realty/Walker

Affinity Real Estate Inc. participates in the Regional Multiple Listing Service of Minnesota, Inc Broker Reciprocity (sm) program, allowing us to display other broker's listings on our website. All properties are subject to prior sale, change or withdrawal.



Call Affinity Real Estate

218-237-3333

info@affinityrealestate.com



Affinity Real Estate - 600 Park Avenue South - Park Rapids MN 56470



website: www.AffinityRealEstate.com | email: info@affinityrealestate.com | office: 218-237-3333 | fax:218-237-3377



\$459,900
MLS 6561593 Lake Home
980 Pleasant Avenue
Akeley MN 56433



website: www.AffinityRealEstate.com | email: info@affinityrealestate.com | office: 218-237-3333 | fax:218-237-3377



\$459,900
MLS 6561593 Lake Home
980 Pleasant Avenue
Akeley MN 56433



website: www.AffinityRealEstate.com | email: info@affinityrealestate.com | office: 218-237-3333 | fax: 218-237-3377

Affinity
REAL ESTATE INC

\$459,900
MLS 6561593 Lake Home
980 Pleasant Avenue
Akeley MN 56433



website: www.AffinityRealEstate.com | email: info@affinityrealestate.com | office: 218-237-3333 | fax: 218-237-3377



\$459,900
MLS 6561593 Lake Home
980 Pleasant Avenue
Akeley MN 56433



website: www.AffinityRealEstate.com | email: info@affinityrealestate.com | office: 218-237-3333 | fax: 218-237-3377

Affinity
REAL ESTATE INC

\$459,900
MLS 6561593 Lake Home
980 Pleasant Avenue
Akeley MN 56433



website: www.AffinityRealEstate.com | email: info@affinityrealestate.com | office: 218-237-3333 | fax:218-237-3377

Affinity
REAL ESTATE INC

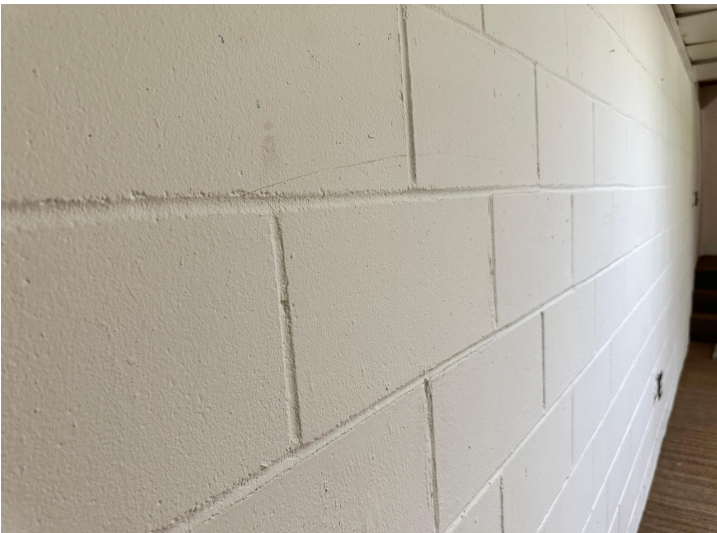
\$459,900
MLS 6561593 Lake Home
980 Pleasant Avenue
Akeley MN 56433



website: www.AffinityRealEstate.com | email: info@affinityrealestate.com | office: 218-237-3333 | fax:218-237-3377



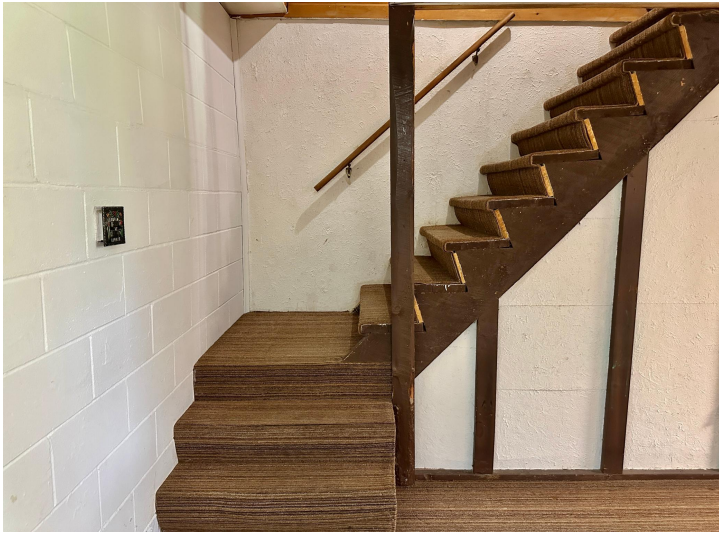
\$459,900
MLS 6561593 Lake Home
980 Pleasant Avenue
Akeley MN 56433



website: www.AffinityRealEstate.com | email: info@affinityrealestate.com | office: 218-237-3333 | fax:218-237-3377



\$459,900
MLS 6561593 Lake Home
980 Pleasant Avenue
Akeley MN 56433



website: www.AffinityRealEstate.com | email: info@affinityrealestate.com | office: 218-237-3333 | fax:218-237-3377



\$459,900
MLS 6561593 Lake Home
980 Pleasant Avenue
Akeley MN 56433



website: www.AffinityRealEstate.com | email: info@affinityrealestate.com | office: 218-237-3333 | fax:218-237-3377



\$459,900
MLS 6561593 Lake Home
980 Pleasant Avenue
Akeley MN 56433



website: www.AffinityRealEstate.com | email: info@affinityrealestate.com | office: 218-237-3333 | fax: 218-237-3377

Affinity
REAL ESTATE INC

\$459,900
MLS 6561593 Lake Home
980 Pleasant Avenue
Akeley MN 56433



website: www.AffinityRealEstate.com | email: info@affinityrealestate.com | office: 218-237-3333 | fax:218-237-3377



\$459,900
MLS 6561593 Lake Home
980 Pleasant Avenue
Akeley MN 56433



website: www.AffinityRealEstate.com | email: info@affinityrealestate.com | office: 218-237-3333 | fax:218-237-3377

Affinity
REAL ESTATE INC

\$459,900
MLS 6561593 Lake Home
980 Pleasant Avenue
Akeley MN 56433



website: www.AffinityRealEstate.com | email: info@affinityrealestate.com | office: 218-237-3333 | fax:218-237-3377

Affinity
REAL ESTATE INC

\$459,900
MLS 6561593 Lake Home
980 Pleasant Avenue
Akeley MN 56433



website: www.AffinityRealEstate.com | email: info@affinityrealestate.com | office: 218-237-3333 | fax:218-237-3377



\$459,900
MLS 6561593 Lake Home
980 Pleasant Avenue
Akeley MN 56433