



MLS 6561998 Lake Land

**\$159,900**

**Description:**

Check out this 3.27 acre Lake Emma lot, with over 500 feet of shoreline. Located in the heart of the Park Rapids, Nevis lakes area. Emma is a pristine 80 acre lake with excellent fishing and water clarity. And you get access to over 2700 acres of adjoining water. Big Sand and Ida are accessible with a small boat, canoe or kayak most of the year. Lower and Upper Bottle lakes are accessible with a larger boat or pontoon. See the potential buildable site in the photos. Soil samples have been taken. The area offers year round activities with ice fishing, snow shoeing and some of the best snowmobile trails in the state and close to Itasca State Park. Lots of public hunting land close by for chasing deer, bear or grouse. Leave the noise and commotion of the big cities behind. Come check out beautiful Hubbard County, Minnesota !!!

**Additional Details:**

Lot Acres	3.27
Lot Dimensions	440x451x517x333
School District	309
Taxes	\$486
Taxes with Assessments	\$486
Tax Year	2023

**Additional Features:**

**Driving Directions:**

From Park Rapids, east on Hwy 34 to Lt onto Co Hwy 4 to Rt onto Co Hwy 40 to Lt onto Hope Dr, .2 miles to sign on the Rt.



Listed By:  
Timber Ghost Realty, LLC

Affinity Real Estate Inc. participates in the Regional Multiple Listing Service of Minnesota, Inc Broker Reciprocity (sm) program, allowing us to display other broker's listings on our website. All properties are subject to prior sale, change or withdrawal.



**Call Affinity Real Estate**

**218-237-3333**

**info@affinityrealestate.com**



**Affinity Real Estate - 600 Park Avenue South - Park Rapids MN 56470**



website: [www.AffinityRealEstate.com](http://www.AffinityRealEstate.com) | email: [info@affinityrealestate.com](mailto:info@affinityrealestate.com) | office: 218-237-3333 | fax: 218-237-3377



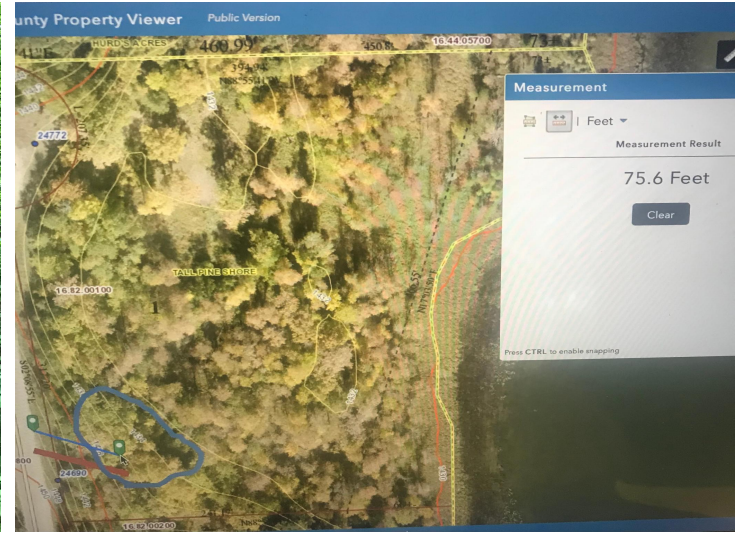
**\$159,900**  
 MLS 6561998 Lake Land  
 24772 Hope Drive  
 Park Rapids MN 56470



website: [www.AffinityRealEstate.com](http://www.AffinityRealEstate.com) | email: [info@affinityrealestate.com](mailto:info@affinityrealestate.com) | office: 218-237-3333 | fax: 218-237-3377



**\$159,900**  
MLS 6561998 Lake Land  
24772 Hope Drive  
Park Rapids MN 56470



website: [www.AffinityRealEstate.com](http://www.AffinityRealEstate.com) | email: [info@affinityrealestate.com](mailto:info@affinityrealestate.com) | office: 218-237-3333 | fax:218-237-3377



**\$159,900**  
MLS 6561998 Lake Land  
24772 Hope Drive  
Park Rapids MN 56470