



MLS 6562062 Land

**\$89,900**

9.6 Acres  
Subdivided

Tract D 24th Avenue  
Backus MN 56435

Status: Active

**Description:**

Check out this beautiful 9.6AC lot located just minutes North of Pine River! This property is loaded with wildlife and offers an opportunity to build your dream home in the woods while being close to all the amenities! Norway Lake is just across the road from this property and there is also opportunity to purchase lake shore across the road. full survey has been complete on all lots. Corners and boundaries are marked. Schedule you're showing today!

**Additional Details:**

Lot Acres	9.6
Lot Dimensions	***See Survey
School District	2174
Taxes	(unreported)
Taxes with Assessments	(unreported)
Tax Year	2024

**Additional Features:**

**Driving Directions:**

NW on 371 out of Pine River N on main St 1/4 mile to property.



Listed By:  
Weiss Realty LLC

Affinity Real Estate Inc. participates in the Regional Multiple Listing Service of Minnesota, Inc Broker Reciprocity (sm) program, allowing us to display other broker's listings on our website. All properties are subject to prior sale, change or withdrawal.



Call Affinity Real Estate

**218-237-3333**

[info@affinityrealestate.com](mailto:info@affinityrealestate.com)



Affinity Real Estate - 600 Park Avenue South - Park Rapids MN 56470



website: [www.AffinityRealEstate.com](http://www.AffinityRealEstate.com) | email: [info@affinityrealestate.com](mailto:info@affinityrealestate.com) | office: 218-237-3333 | fax:218-237-3377

**Affinity**  
REAL ESTATE INC

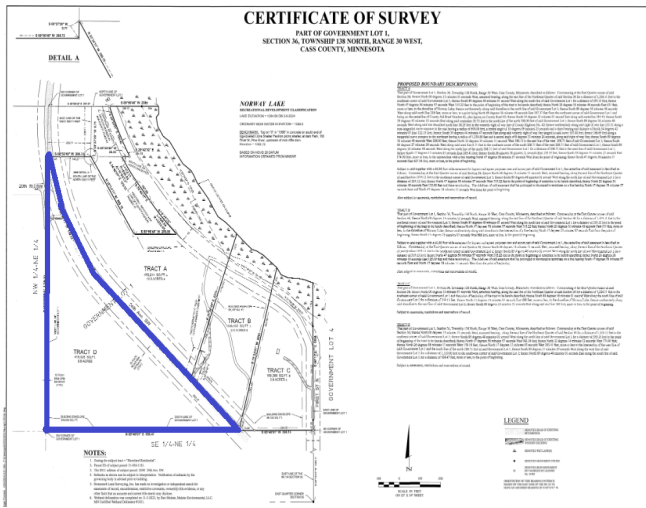
**\$89,900**  
MLS 6562062 Land  
Tract D 24th Avenue  
Backus MN 56435



website: [www.AffinityRealEstate.com](http://www.AffinityRealEstate.com) | email: [info@affinityrealestate.com](mailto:info@affinityrealestate.com) | office: 218-237-3333 | fax: 218-237-3377

**Affinity**  
REAL ESTATE INC

**\$89,900**  
MLS 6562062 Land  
Tract D 24th Avenue  
Backus MN 56435



website: [www.AffinityRealEstate.com](http://www.AffinityRealEstate.com) | email: [info@affinityrealestate.com](mailto:info@affinityrealestate.com) | office: 218-237-3333 | fax: 218-237-3377



**\$89,900**  
 MLS 6562062 Land  
 Tract D 24th Avenue  
 Backus MN 56435