



MLS 6562250 Lake Home

\$500,000

2,232 sq ft
4 bedrooms
2 baths

45320 Maple Shores Lane
Osage MN 56570

Waterfront: Shell

Status: Active

Description:

Nestle in and enjoy everything nature has to offer with this INCREDIBLE property on Shell Lake. Over 200 feet of secluded shoreline provide privacy and pristine views of PARADISE. Step inside to reveal the charm and detail that make this house a home including Quartz countertops, Engineered Bamboo floors, Stainless steel appliances, wood burning fireplace, GORGEOUS acid washed cement flooring, STUNNING lake views, an OVERSIZED and HEATED detached 3 stall garage, SMART home features/ capability (lights, cameras and thermostats), Large rear deck with views of Shell Lake and so much more. Call your favorite Realtor and schedule your private showing, today!

Additional Details:

Year Built	1999
Lot Acres	1.45
Lot Dimensions	207 x 242 x 102 x 205 x 307
Garage Stalls	3
School District	23
Taxes	\$2,160
Taxes with Assessments	\$2,160
Tax Year	2023

Additional Features:

Fuel: Propane **Heat:** Forced Air

Driving Directions:

From Hwy 34 East: turn N. on Martha's Rd. Continue to 455 Ave. Take 455 Ave N. until S Shell Lake Rd. Turn W. and follow past The Wilds Resort. S. Shell turns into Maple Ln. Home is on North side of the road (lake side).



Listed By:
HomeSmart Adventure Realty

Affinity Real Estate Inc. participates in the Regional Multiple Listing Service of Minnesota, Inc Broker Reciprocity (sm) program, allowing us to display other broker's listings on our website. All properties are subject to prior sale, change or withdrawal.



Call Affinity Real Estate

218-237-3333

info@affinityrealestate.com



Affinity Real Estate - 600 Park Avenue South - Park Rapids MN 56470



website: www.AffinityRealEstate.com | email: info@affinityrealestate.com | office: 218-237-3333 | fax:218-237-3377



\$500,000
MLS 6562250 Lake Home
45320 Maple Shores Lane
Osage MN 56570



website: www.AffinityRealEstate.com | email: info@affinityrealestate.com | office: 218-237-3333 | fax:218-237-3377

Affinity
REAL ESTATE INC

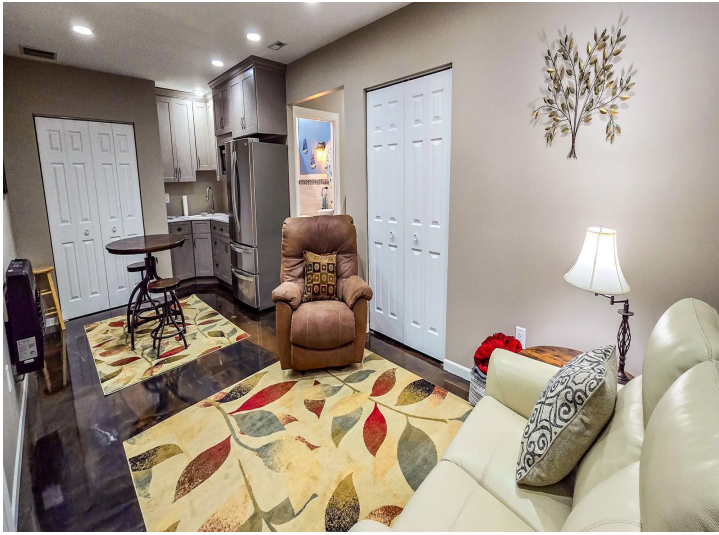
\$500,000
MLS 6562250 Lake Home
45320 Maple Shores Lane
Osage MN 56570



website: www.AffinityRealEstate.com | email: info@affinityrealestate.com | office: 218-237-3333 | fax: 218-237-3377

Affinity
REAL ESTATE INC

\$500,000
MLS 6562250 Lake Home
45320 Maple Shores Lane
Osage MN 56570



website: www.AffinityRealEstate.com | email: info@affinityrealestate.com | office: 218-237-3333 | fax:218-237-3377



\$500,000
MLS 6562250 Lake Home
45320 Maple Shores Lane
Osage MN 56570



website: www.AffinityRealEstate.com | email: info@affinityrealestate.com | office: 218-237-3333 | fax:218-237-3377



\$500,000
MLS 6562250 Lake Home
45320 Maple Shores Lane
Osage MN 56570



website: www.AffinityRealEstate.com | email: info@affinityrealestate.com | office: 218-237-3333 | fax: 218-237-3377



\$500,000
MLS 6562250 Lake Home
45320 Maple Shores Lane
Osage MN 56570