



MLS 6562275 Commercial Sale

\$124,900

Description:

Office building on main street in Battle Lake

Additional Details:

Year Built	1910
Lot Acres	0.72
Lot Dimensions	20 x 134
School District	542
Taxes	\$1,084
Taxes with Assessments	\$1,084
Tax Year	2024

Additional Features:

Fuel: Natural Gas **Heat:** Forced Air **Sewer:** City Sewer/Connected **Water:** City Water/Connected **Air Conditioning:** Central Air

Driving Directions:

105 lake ave



Listed By:
Lakes Family Real Estate/Otter Tail Real Estate

Affinity Real Estate Inc. participates in the Regional Multiple Listing Service of Minnesota, Inc Broker Reciprocity (sm) program, allowing us to display other broker's listings on our website. All properties are subject to prior sale, change or withdrawal.



Call Affinity Real Estate

218-237-3333

info@affinityrealestate.com



Affinity Real Estate - 600 Park Avenue South - Park Rapids MN 56470



website: www.AffinityRealEstate.com | email: info@affinityrealestate.com | office: 218-237-3333 | fax:218-237-3377



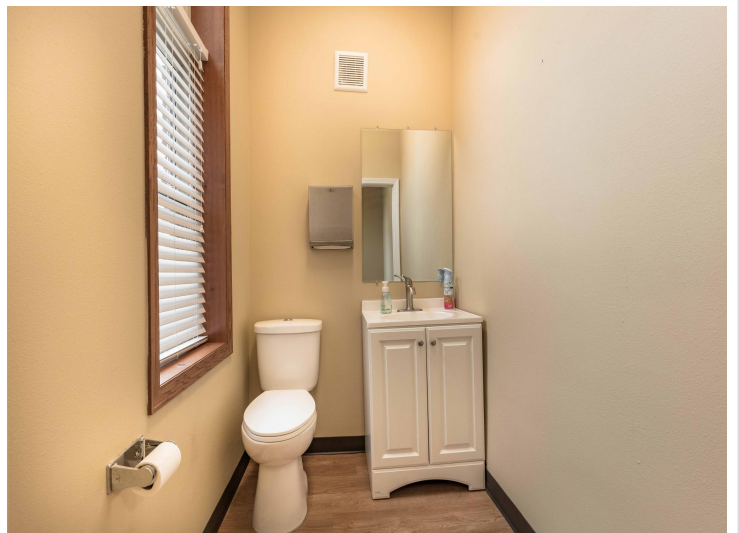
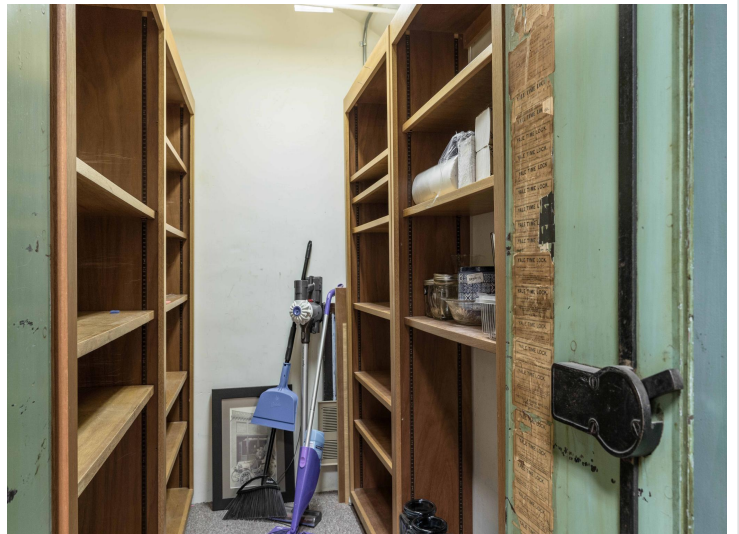
\$124,900
MLS 6562275 Commercial
Sale
105 Lake Avenue
Battle Lake MN 56515



website: www.AffinityRealEstate.com | email: info@affinityrealestate.com | office: 218-237-3333 | fax:218-237-3377

Affinity
REAL ESTATE INC

\$124,900
MLS 6562275 Commercial
Sale
105 Lake Avenue
Battle Lake MN 56515



website: www.AffinityRealEstate.com | email: info@affinityrealestate.com | office: 218-237-3333 | fax:218-237-3377

Affinity
REAL ESTATE INC

\$124,900
MLS 6562275 Commercial
Sale
105 Lake Avenue
Battle Lake MN 56515



website: www.AffinityRealEstate.com | email: info@affinityrealestate.com | office: 218-237-3333 | fax:218-237-3377



\$124,900
MLS 6562275 Commercial
Sale
105 Lake Avenue
Battle Lake MN 56515