



MLS 6562385 Lake Home

\$749,900

2,688 sq ft
3 bedrooms
3 baths

5514 Whispering Pines Drive
Hackensack MN 56452

Waterfront: Birch Lake (11041200)

Status: Pending

Description:

Stunning Custom crafted Anderson Log home nestled in tall majestic pines on beautiful Birch Lake! Relax on your lakeside covered porch & take in sunrises or head to the lake on your shore station dock w/112 feet of level elevation to water edge on 5+ acres of UP NORTH privacy! This incredible one of a kind TURNKEY home offers 3 BR, 3 BA, Lg. loft BR, 2 covered porches, 2 stone fireplaces and more! Main level features: vaulted ceiling, granite counters, open concept w/ stone fireplace, gorgeous lake views, primary BR/BA & walk in closet, powder room. Lower level includes 2 BR, Full BA, wet bar, FP,& walkout to large patio. Oversized detached garage w/ finished living quarters above (368 sf.ft.) PLUS 30x42 insulated/heated steel pole building w/Generac Generator. Birch lake features over 1200+acres. This Up-North lake custom Anderson Log home is meticulous! 6 miles to Hackensack- biking/walking & boating distance to local shops, restaurants & the renowned Paul Bunyan Trail.

Additional Details:

Year Built	2005
Lot Acres	5.2
Lot Dimensions	112x826x191x105x381x109x278x278x98
Garage Stalls	6
School District	113
Taxes	\$3,450
Taxes with Assessments	\$3,516
Tax Year	2024

Additional Features:

Basement: Finished **Fuel:** Electric, Propane **Garage:** 6 **Heat:** Dual, Fireplace(s), Hot Water, Radiant Floor **Sewer:** Private Sewer, Septic System Compliant - Yes, Tank with Drainage Field **Water:** Submersible - 4 Inch, Private, Well **Air Conditioning:** Central Air

Driving Directions:

From Hackensack, North on 371 to Co Rd 6 (Lower Ten Mile Lake Rd), go approximately 3.4 miles to Whispering Pines Dr NW, left 0.4 miles to #5514.



Listed By:
Kurilla Real Estate LTD

Affinity Real Estate Inc. participates in the Regional Multiple Listing Service of Minnesota, Inc Broker Reciprocity (sm) program, allowing us to display other broker's listings on our website. All properties are subject to prior sale, change or withdrawal.



Call Affinity Real Estate

218-237-3333

info@affinityrealestate.com



Affinity Real Estate - 600 Park Avenue South - Park Rapids MN 56470



website: www.AffinityRealEstate.com | email: info@affinityrealestate.com | office: 218-237-3333 | fax:218-237-3377

Affinity
REAL ESTATE INC

\$749,900
MLS 6562385 Lake Home
5514 Whispering Pines Drive
Hackensack MN 56452



website: www.AffinityRealEstate.com | email: info@affinityrealestate.com | office: 218-237-3333 | fax: 218-237-3377

Affinity
REAL ESTATE INC

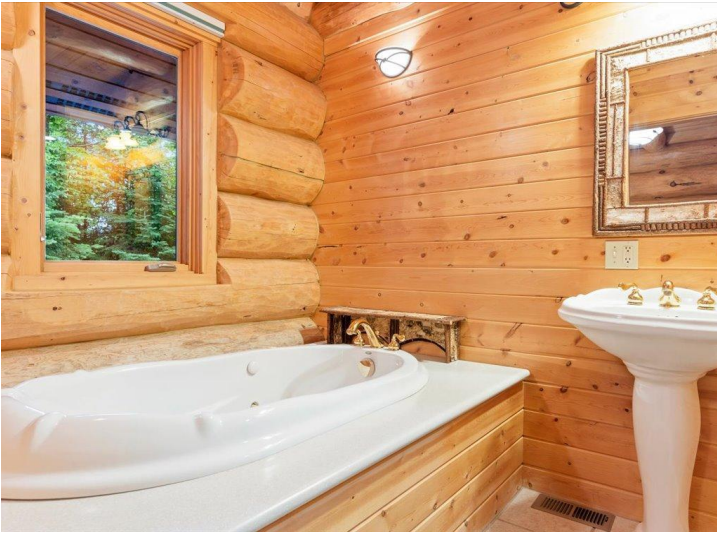
\$749,900
MLS 6562385 Lake Home
5514 Whispering Pines Drive
Hackensack MN 56452



website: www.AffinityRealEstate.com | email: info@affinityrealestate.com | office: 218-237-3333 | fax: 218-237-3377

Affinity
REAL ESTATE INC

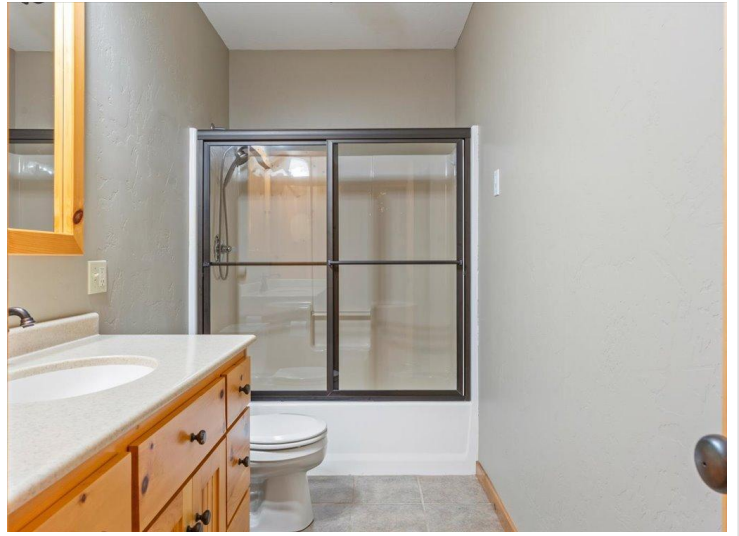
\$749,900
MLS 6562385 Lake Home
5514 Whispering Pines Drive
Hackensack MN 56452



website: www.AffinityRealEstate.com | email: info@affinityrealestate.com | office: 218-237-3333 | fax:218-237-3377



\$749,900
MLS 6562385 Lake Home
5514 Whispering Pines Drive
Hackensack MN 56452



website: www.AffinityRealEstate.com | email: info@affinityrealestate.com | office: 218-237-3333 | fax:218-237-3377

Affinity
REAL ESTATE INC

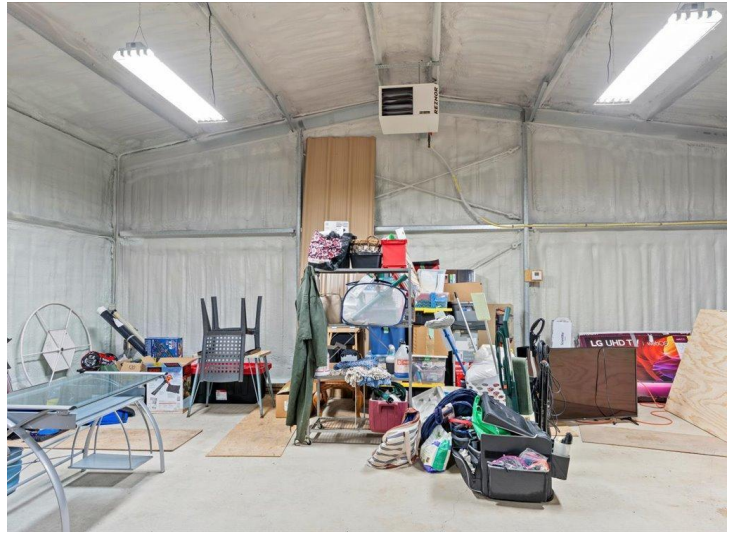
\$749,900
MLS 6562385 Lake Home
5514 Whispering Pines Drive
Hackensack MN 56452



website: www.AffinityRealEstate.com | email: info@affinityrealestate.com | office: 218-237-3333 | fax:218-237-3377

Affinity
REAL ESTATE INC

\$749,900
MLS 6562385 Lake Home
5514 Whispering Pines Drive
Hackensack MN 56452



website: www.AffinityRealEstate.com | email: info@affinityrealestate.com | office: 218-237-3333 | fax:218-237-3377



\$749,900
MLS 6562385 Lake Home
5514 Whispering Pines Drive
Hackensack MN 56452