



MLS 6562509 Residential

**\$629,900**

4,008 sq ft  
3 bedrooms  
3 baths

000 Meadowlark Lane  
Pine River MN 56474

Status: Active

**Description:**

Choose your ideal 5-acre parcel to build your dream home in the country, conveniently located between Crosslake and pine River, near the scenic Whitefish Chain of Lakes. Select from a variety of lots, some with a charming mix of trees, some with paved roads, and others with open spaces.

Each lot offers generous building envelopes, providing ample room for landscaping and gardening. Enjoy a spacious border perfect for planting shrubs, trees, or bushes, ensuring privacy and space.

With minimal covenants designed to protect your investment, this is a rare opportunity to create your perfect country retreat.

**Additional Details:**

Year Built	2024
Lot Acres	4.95
Lot Dimensions	425x511x376x620
Garage Stalls	3
School District	2174
Taxes	\$106
Taxes with Assessments	\$106
Tax Year	2024

**Additional Features:**

**Fuel:** Propane **Heat:** Forced Air

**Driving Directions:**

From Nisswa, N on 371 to Jenkins, Rt. on 15 to Hwy 1, Rt. on #1 for 2 & 3/4 miles to Evergreen Way, to left on Meadowlark Ln, to Cul-de-sac parcel on left.



Listed By:  
RE/MAX Results

Affinity Real Estate Inc. participates in the Regional Multiple Listing Service of Minnesota, Inc Broker Reciprocity (sm) program, allowing us to display other broker's listings on our website. All properties are subject to prior sale, change or withdrawal.



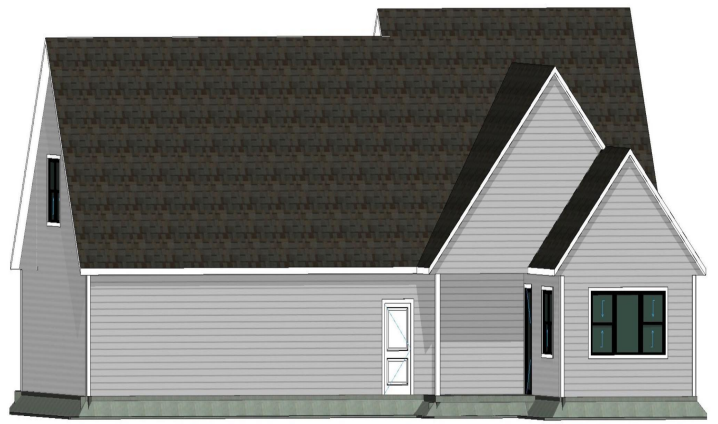
**Call Affinity Real Estate**

**218-237-3333**

**info@affinityrealestate.com**



**Affinity Real Estate - 600 Park Avenue South - Park Rapids MN 56470**



website: [www.AffinityRealEstate.com](http://www.AffinityRealEstate.com) | email: [info@affinityrealestate.com](mailto:info@affinityrealestate.com) | office: 218-237-3333 | fax: 218-237-3377



**\$629,900**  
MLS 6562509 Residential  
000 Meadowlark Lane  
Pine River MN 56474