



MLS 6562604 Lake Land

**\$239,900**

**Description:**

RARE FIND ON BROADWATER BAY OF WOMAN LAKE FEATURING A NICELY WOODED "PARK LIKE" LEVEL LOT BOASTING OVER 100 PLUS FT OF LAKESHORE WITH NATURAL WESTERLY VIEWS ON ONE OF THE AREAS PREMIER CHAIN OF LAKES

**Additional Details:**

Lot Acres	0.82
Lot Dimensions	119x399x105x327
School District	118
Taxes	\$1,144
Taxes with Assessments	\$1,144
Tax Year	2024

**Additional Features:**

**Driving Directions:**

From Longville south on State 84 approx .6 miles to right on Glenmar Dr continue 2.6 miles to right at 630 follow signs to property



Listed By:  
Rusty's Up North Realty

Affinity Real Estate Inc. participates in the Regional Multiple Listing Service of Minnesota, Inc Broker Reciprocity (sm) program, allowing us to display other broker's listings on our website. All properties are subject to prior sale, change or withdrawal.



Call Affinity Real Estate

**218-237-3333**

[info@affinityrealestate.com](mailto:info@affinityrealestate.com)



Affinity Real Estate - 600 Park Avenue South - Park Rapids MN 56470



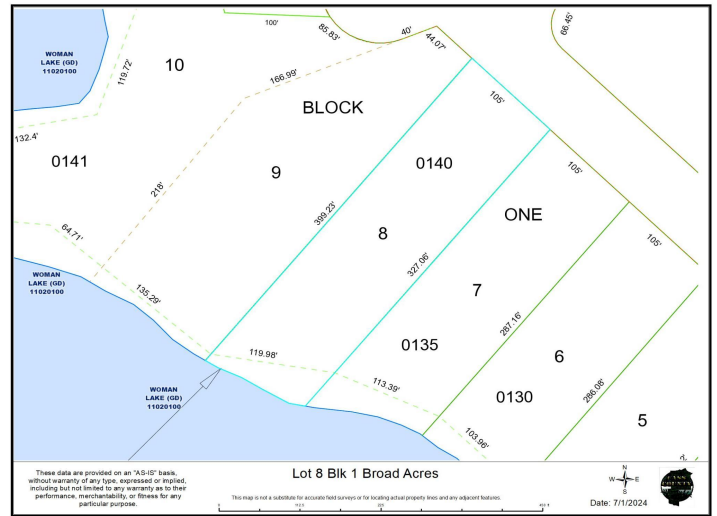


website: [www.AffinityRealEstate.com](http://www.AffinityRealEstate.com) | email: [info@affinityrealestate.com](mailto:info@affinityrealestate.com) | office: 218-237-3333 | fax:218-237-3377



**\$239,900**  
MLS 6562604 Lake Land  
xxx Glenmar Drive  
Longville MN 56655





website: [www.AffinityRealEstate.com](http://www.AffinityRealEstate.com) | email: [info@affinityrealestate.com](mailto:info@affinityrealestate.com) | office: 218-237-3333 | fax: 218-237-3377



**\$239,900**  
 MLS 6562604 Lake Land  
 xxx Glenmar Drive  
 Longville MN 56655