



MLS 6562611 Residential

\$269,900

1,960 sq ft
4 bedrooms
3 baths

1320 Bemidji Avenue
Bemidji MN 56601

Status: Active

Description:

This location is nothing short of perfect!! Centrally located in Bemidji MN is this 4 bedroom 3 bathroom within a few blocks of Bemidji State University and minutes from a variety of restaurants, shopping, lakes, parks and more! The property boasts an attached garage, fenced in backyard, and a large 4 season breezeway/entry, vinyl siding, and a great flowing floor plan. They floor plan of this home boasts 2 primary bedrooms, one on the lower level, main floor and 2 bedrooms and a full bathroom on the upper level. There is a current long term rental license in place with an opportunity to do short term rental pending approval.

Additional Details:

Year Built	1951
Lot Acres	0.16
Lot Dimensions	140x50
Garage Stalls	2
School District	31
Taxes	\$2,598
Taxes with Assessments	\$2,598
Tax Year	2024

Additional Features:

Basement: Block, Full **Fuel:** Natural Gas **Garage:** 2 **Heat:** Forced Air **Sewer:** City Sewer/Connected **Water:** City Water/Connected **Air Conditioning:** Central Air

Driving Directions:

Corner of 14th Street and Bemidji Ave N



Listed By:
218 Real Estate

Affinity Real Estate Inc. participates in the Regional Multiple Listing Service of Minnesota, Inc Broker Reciprocity (sm) program, allowing us to display other broker's listings on our website. All properties are subject to prior sale, change or withdrawal.



Call Affinity Real Estate

218-237-3333

info@affinityrealestate.com



Affinity Real Estate - 600 Park Avenue South - Park Rapids MN 56470



website: www.AffinityRealEstate.com | email: info@affinityrealestate.com | office: 218-237-3333 | fax: 218-237-3377

Affinity
REAL ESTATE INC

\$269,900
MLS 6562611 Residential
1320 Bemidji Avenue
Bemidji MN 56601



website: www.AffinityRealEstate.com | email: info@affinityrealestate.com | office: 218-237-3333 | fax:218-237-3377

Affinity
REAL ESTATE INC

\$269,900
MLS 6562611 Residential
1320 Bemidji Avenue
Bemidji MN 56601



website: www.AffinityRealEstate.com | email: info@affinityrealestate.com | office: 218-237-3333 | fax:218-237-3377



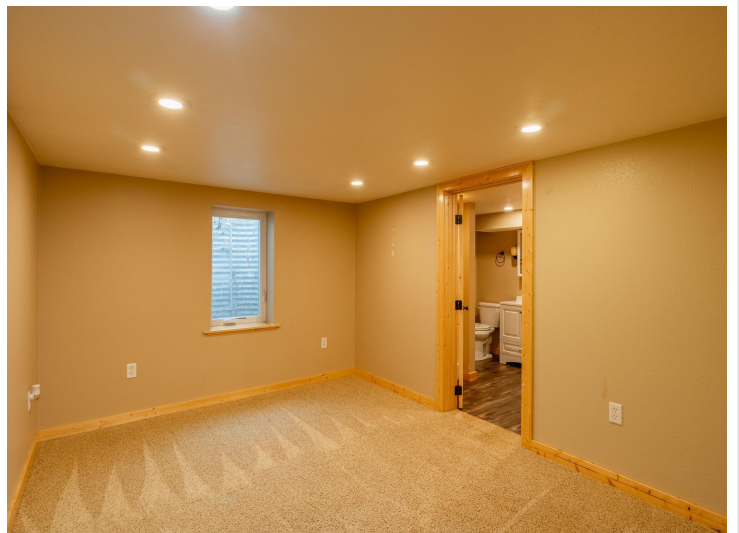
\$269,900
MLS 6562611 Residential
1320 Bemidji Avenue
Bemidji MN 56601



website: www.AffinityRealEstate.com | email: info@affinityrealestate.com | office: 218-237-3333 | fax:218-237-3377



\$269,900
MLS 6562611 Residential
1320 Bemidji Avenue
Bemidji MN 56601



website: www.AffinityRealEstate.com | email: info@affinityrealestate.com | office: 218-237-3333 | fax: 218-237-3377

Affinity
REAL ESTATE INC

\$269,900
MLS 6562611 Residential
1320 Bemidji Avenue
Bemidji MN 56601



website: www.AffinityRealEstate.com | email: info@affinityrealestate.com | office: 218-237-3333 | fax:218-237-3377



\$269,900
MLS 6562611 Residential
1320 Bemidji Avenue
Bemidji MN 56601



website: www.AffinityRealEstate.com | email: info@affinityrealestate.com | office: 218-237-3333 | fax:218-237-3377



\$269,900
MLS 6562611 Residential
1320 Bemidji Avenue
Bemidji MN 56601