



MLS 6562651 Land

\$59,900

1.84 Acres
Plat Designed

30945 Vahalla Lane
Cass Lake MN 56633

Status: Active

Description:

Wooded 1.8 AC lot just south of Midge Lake waiting for you! Gladens Addition is quiet and private and tucked in the trees. No covenants.

Additional Details:

Lot Acres	1.84
Lot Dimensions	230x404x257x289
School District	115
Taxes	\$256
Taxes with Assessments	\$256
Tax Year	2024

Additional Features:

Driving Directions:

From Bemidji: East on Hwy 2 to 317th Ave. Right (south) on 317th to 500th ST. Right on 500th ST, 4/10th of a mile to Winding Gladen Dr. Right on Gladen to Vahalla, left on Vallaha, property will be 2nd lot on the left



Listed By:
Lake-N-Woods Realty, Inc.

Affinity Real Estate Inc. participates in the Regional Multiple Listing Service of Minnesota, Inc Broker Reciprocity (sm) program, allowing us to display other broker's listings on our website. All properties are subject to prior sale, change or withdrawal.



Call Affinity Real Estate

218-237-3333

info@affinityrealestate.com



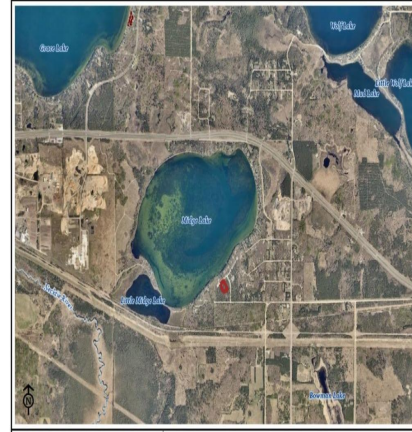
Affinity Real Estate - 600 Park Avenue South - Park Rapids MN 56470



website: www.AffinityRealEstate.com | email: info@affinityrealestate.com | office: 218-237-3333 | fax: 218-237-3377



\$59,900
 MLS 6562651 Land
 30945 Vahalla Lane
 Cass Lake MN 56633



30945 Vahalla Lane map 3

Hubbard County 301 Court Ave. Park Rapids, MN 56402 Created 7/13/2024 at 10:30 PM

website: www.AffinityRealEstate.com | email: info@affinityrealestate.com | office: 218-237-3333 | fax:218-237-3377



\$59,900
MLS 6562651 Land
30945 Vahalla Lane
Cass Lake MN 56633