

MLS 6562892 Commercial Sale

**\$449,000**

**Description:**

Commercial Opportunity available! 12 City Lots on frontage road of Highway 2 in Cass Lake.

**Additional Details:**

Year Built	1960
Lot Dimensions	140x300
Garage Stalls	2
School District	115
Taxes	\$1,310
Taxes with Assessments	(unreported)
Tax Year	2024

**Additional Features:**

**Fuel:** Electric **Garage:** 2 **Heat:** Other **Sewer:** City Sewer/Connected **Water:** City Water/Connected

**Driving Directions:**

Hwy 2 frontage road between Aspen Ave and Grant Utley Ave in Cass Lake.



Listed By:  
Rogue Real Estate Co.

Affinity Real Estate Inc. participates in the Regional Multiple Listing Service of Minnesota, Inc Broker Reciprocity (sm) program, allowing us to display other broker's listings on our website. All properties are subject to prior sale, change or withdrawal.



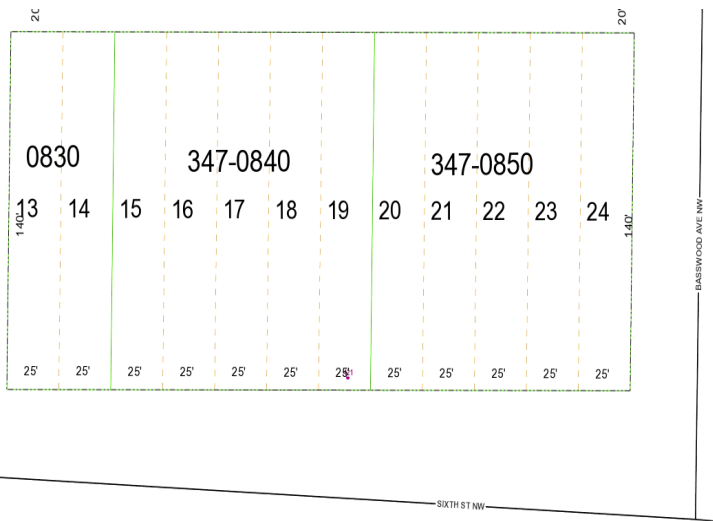
Call Affinity Real Estate

**218-237-3333**

[info@affinityrealestate.com](mailto:info@affinityrealestate.com)



Affinity Real Estate - 600 Park Avenue South - Park Rapids MN 56470



website: [www.AffinityRealEstate.com](http://www.AffinityRealEstate.com) | email: [info@affinityrealestate.com](mailto:info@affinityrealestate.com) | office: 218-237-3333 | fax: 218-237-3377



**\$449,000**  
 MLS 6562892 Commercial  
 Sale  
 421 Sixth Street  
 Cass Lake MN 56633