



MLS 6562950 Lake Home

**\$950,000**

2,560 sq ft  
3 bedrooms  
2 baths

36970 Height Of Land Drive  
Rochert MN 56578

Waterfront: Height of Land

Status: Active

**Description:**

Height of Land Lake is just 13 miles East of Detroit Lakes and is positioned on the South boundary of Tamarac National Wildlife Refuge. TNWR has 43,000 acres of land that is managed by the US Fish & Wildlife Service that offers numerous trails for hiking or ATV and hunting. The home sits on a perch on the SW side of the lake. The views to the North and East are unmatched in this area because there is no development on the North side of the lake. The structure was designed for sustainability and longevity. The West side of the property is heavily wooded with walking trails and a second driveway to access the lower level. This property could make a very unique vacation rental or the foundation for a spectacular estate. This property has been very well maintained and if you are looking for a Northwoods retreat that is close to other amenities, this is a must see.

**Additional Details:**

Year Built	2015
Lot Acres	6.28
Lot Dimensions	610
Garage Stalls	3
School District	23
Taxes	\$4,746
Taxes with Assessments	\$4,749
Tax Year	2023

**Additional Features:**

**Basement:** Daylight/Lookout Windows, Egress Window(s), Finished, Concrete, Single Tenant Access, Tile Shower, Walkout **Fuel:** Electric, Propane  
**Garage:** 3 **Heat:** Forced Air **Sewer:** Private Sewer, Tank with Drainage Field **Water:** Submersible - 4 Inch, Drilled, Well **Air Conditioning:** Central Air

**Driving Directions:**

From Detroit Lakes, take US HWY 34 East to to SW Height of Land Dr, turn left and follow to property



Listed By:  
Counselor Realty of Detroit Lakes

Affinity Real Estate Inc. participates in the Regional Multiple Listing Service of Minnesota, Inc Broker Reciprocity (sm) program, allowing us to display other broker's listings on our website. All properties are subject to prior sale, change or withdrawal.



**Call Affinity Real Estate**

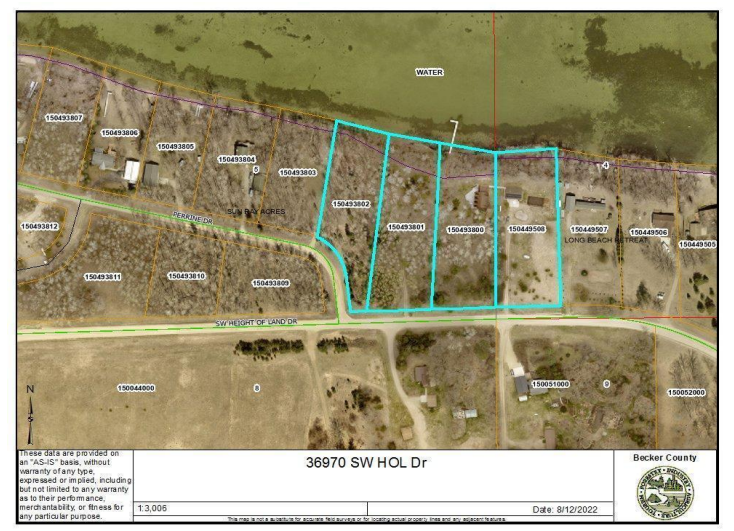
**218-237-3333**

**info@affinityrealestate.com**



**Affinity Real Estate - 600 Park Avenue South - Park Rapids MN 56470**





website: [www.AffinityRealEstate.com](http://www.AffinityRealEstate.com) | email: [info@affinityrealestate.com](mailto:info@affinityrealestate.com) | office: 218-237-3333 | fax: 218-237-3377



**\$950,000**  
 MLS 6562950 Lake Home  
 36970 Height Of Land Drive  
 Rochert MN 56578



website: [www.AffinityRealEstate.com](http://www.AffinityRealEstate.com) | email: [info@affinityrealestate.com](mailto:info@affinityrealestate.com) | office: 218-237-3333 | fax:218-237-3377



**\$950,000**

MLS 6562950 Lake Home  
36970 Height Of Land Drive  
Rochert MN 56578



website: [www.AffinityRealEstate.com](http://www.AffinityRealEstate.com) | email: [info@affinityrealestate.com](mailto:info@affinityrealestate.com) | office: 218-237-3333 | fax:218-237-3377



**\$950,000**  
MLS 6562950 Lake Home  
36970 Height Of Land Drive  
Rochert MN 56578