



MLS 6563039 Residential

\$669,900

2,912 sq ft
4 bedrooms
3 baths

29668 Pima Circle
Pequot Lakes MN 56472

Status: Active

Description:

Be sure to check out this beautiful nearly completed new construction home in Breezy Point. The layout with 3 large bedrooms and 2 baths on the main level, plus an additional bedroom and full bath downstairs, offers plenty of space. The 8-foot patio doors with trapezoids above floods the home with natural light and offers beautiful views of the surroundings. The huge wrap-around deck is a wonderful feature for enjoying outdoor space. It has a perfect blend of comfort and modern design! Some additional features of the home include alder kitchen cabinets with self closing drawers and doors, gas fire place, ceiling fans, on demand hot water, walk out basement w/ concrete patio and full appliance package. The bonus of this property is the 28 x 32 garage. Plenty of room for all of your toys! Asphalt driveway and seeded yard is scheduled to be completed. Whoever buys this home will surely love it! It could be you!

Additional Details:

Year Built	2024
Lot Acres	1.01
Lot Dimensions	1.01 acres
Garage Stalls	3
School District	186
Taxes	\$640
Taxes with Assessments	\$640
Tax Year	2024

Additional Features:

Fuel: Natural Gas **Heat:** Forced Air, Fireplace(s)

Driving Directions:

From Hwy 371 in Pequot Lakes, Go East on County Rd 11 to right on Ranchette Drive to Right on Navaho Trail to Left on Pima Circle. First Property on the left. Sign on Property



Listed By:
Keller Williams Realty Professionals

Affinity Real Estate Inc. participates in the Regional Multiple Listing Service of Minnesota, Inc Broker Reciprocity (sm) program, allowing us to display other broker's listings on our website. All properties are subject to prior sale, change or withdrawal.



Call Affinity Real Estate

218-237-3333

info@affinityrealestate.com



Affinity Real Estate - 600 Park Avenue South - Park Rapids MN 56470



website: www.AffinityRealEstate.com | email: info@affinityrealestate.com | office: 218-237-3333 | fax: 218-237-3377

Affinity
REAL ESTATE INC

\$669,900
MLS 6563039 Residential
29668 Pima Circle
Pequot Lakes MN 56472



website: www.AffinityRealEstate.com | email: info@affinityrealestate.com | office: 218-237-3333 | fax: 218-237-3377

Affinity
REAL ESTATE INC

\$669,900
MLS 6563039 Residential
29668 Pima Circle
Pequot Lakes MN 56472



website: www.AffinityRealEstate.com | email: info@affinityrealestate.com | office: 218-237-3333 | fax:218-237-3377

Affinity
REAL ESTATE INC

\$669,900
MLS 6563039 Residential
29668 Pima Circle
Pequot Lakes MN 56472



website: www.AffinityRealEstate.com | email: info@affinityrealestate.com | office: 218-237-3333 | fax: 218-237-3377

Affinity
REAL ESTATE INC

\$669,900
MLS 6563039 Residential
29668 Pima Circle
Pequot Lakes MN 56472



website: www.AffinityRealEstate.com | email: info@affinityrealestate.com | office: 218-237-3333 | fax: 218-237-3377



\$669,900
MLS 6563039 Residential
29668 Pima Circle
Pequot Lakes MN 56472



website: www.AffinityRealEstate.com | email: info@affinityrealestate.com | office: 218-237-3333 | fax:218-237-3377



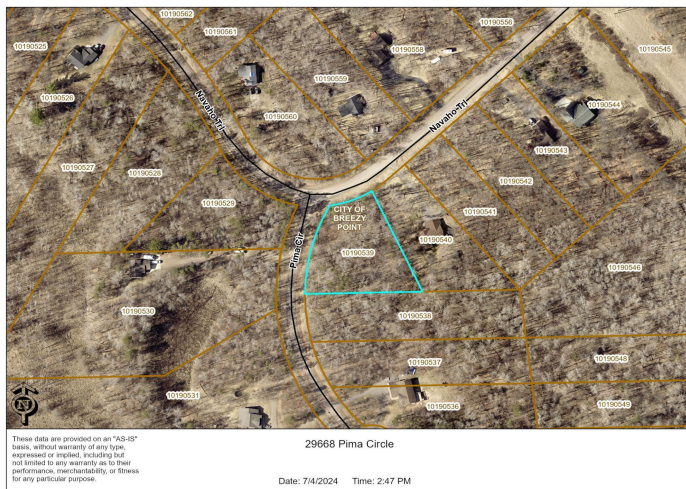
\$669,900
MLS 6563039 Residential
29668 Pima Circle
Pequot Lakes MN 56472



website: www.AffinityRealEstate.com | email: info@affinityrealestate.com | office: 218-237-3333 | fax:218-237-3377

Affinity
REAL ESTATE INC

\$669,900
MLS 6563039 Residential
29668 Pima Circle
Pequot Lakes MN 56472



website: www.AffinityRealEstate.com | email: info@affinityrealestate.com | office: 218-237-3333 | fax:218-237-3377



\$669,900
 MLS 6563039 Residential
 29668 Pima Circle
 Pequot Lakes MN 56472