



MLS 6563361 Lake Land

\$175,000

Description:

Discover over two acres of serene privacy nestled along the shores of Lake George. With electric and driveway already in place, and over 300 ft of lakeshore, this property offers a gradual slope to the lake, ideal for a walkout basement. Surrounded by mature trees, this is an opportunity to create the lakeside retreat of your dreams.

Additional Details:

Lot Acres	2.42
Lot Dimensions	316x322x380x354
School District	309
Taxes	\$488
Taxes with Assessments	\$488
Tax Year	2024

Additional Features:

Driving Directions:

From Park Rapids Hwy 71/Hwy34 Head East to County 4. Then head North to County 4 to Natures Edge Drive. Then head East on Natures Edge Drive to property on right.



Listed By:
Wolff & Simon Real Estate

Affinity Real Estate Inc. participates in the Regional Multiple Listing Service of Minnesota, Inc Broker Reciprocity (sm) program, allowing us to display other broker's listings on our website. All properties are subject to prior sale, change or withdrawal.



Call Affinity Real Estate

218-237-3333

info@affinityrealestate.com



Affinity Real Estate - 600 Park Avenue South - Park Rapids MN 56470



website: www.AffinityRealEstate.com | email: info@affinityrealestate.com | office: 218-237-3333 | fax:218-237-3377



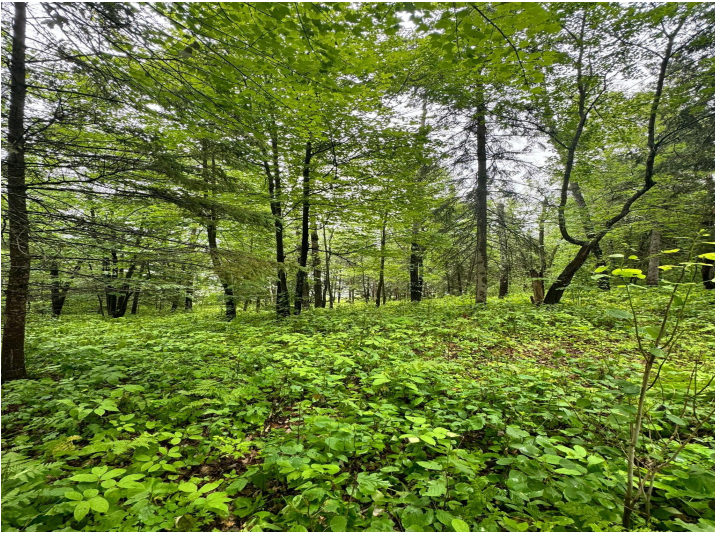
\$175,000
MLS 6563361 Lake Land
18605 Natures Edge Drive
Lake George MN 56458



website: www.AffinityRealEstate.com | email: info@affinityrealestate.com | office: 218-237-3333 | fax:218-237-3377



\$175,000
MLS 6563361 Lake Land
18605 Natures Edge Drive
Lake George MN 56458



website: www.AffinityRealEstate.com | email: info@affinityrealestate.com | office: 218-237-3333 | fax:218-237-3377



\$175,000
MLS 6563361 Lake Land
18605 Natures Edge Drive
Lake George MN 56458



website: www.AffinityRealEstate.com | email: info@affinityrealestate.com | office: 218-237-3333 | fax:218-237-3377



\$175,000
MLS 6563361 Lake Land
18605 Natures Edge Drive
Lake George MN 56458