



MLS 6563500 Lake Home

\$199,000

1,140 sq ft
3 bedrooms
2 baths

127 Alpine Trail
Longville MN 56655

Waterfront: Girl

Status: Active

Description:

Discover this charming 1,140 square-foot single-wide mobile home with access to Girl Lake. The open floor plan features a spacious kitchen/dining area and a cozy living room, ideal for gatherings with family and friends. The home offers a well-designed layout. Two guest bedrooms and a full bath are on one side, while the owner's suite is situated on the other, ensuring privacy and convenience. Additional highlights include a washer/dryer hook-up, ample kitchen storage, and a dedicated coffee bar. Nestled on a beautiful wooded .46 acre lot, this property is framed by majestic pines, providing a serene and picturesque setting. A large oversized garage along with a 10 x 14 storage shed adds extra convenience for all your storage needs. Located within the city limits of Longville, this home benefits from city sewer, a drilled deep well, and deeded access to Girl Lake, part of the Woman Lake chain, offering endless recreational opportunities.

Additional Details:

Year Built	1995
Lot Acres	0.46
Lot Dimensions	154 x 78 x 133 x 150
Garage Stalls	4
School District	118
Taxes	\$1,010
Taxes with Assessments	\$1,076
Tax Year	2024

Additional Features:

Basement: None **Fuel:** Propane **Garage:** 4 **Heat:** Forced Air **Sewer:** City Sewer/Connected **Water:** Submersible - 4 Inch, Drilled, Well **Air Conditioning:** None

Driving Directions:

From Longville - County 5, turn left on Journeys End Rd. Turn right on Pine Dr and then right on Alpine Dr to property.



Listed By:
Heartland Real Estate

Affinity Real Estate Inc. participates in the Regional Multiple Listing Service of Minnesota, Inc Broker Reciprocity (sm) program, allowing us to display other broker's listings on our website. All properties are subject to prior sale, change or withdrawal.



Call Affinity Real Estate

218-237-3333

info@affinityrealestate.com



Affinity Real Estate - 600 Park Avenue South - Park Rapids MN 56470



website: www.AffinityRealEstate.com | email: info@affinityrealestate.com | office: 218-237-3333 | fax:218-237-3377



\$199,000
MLS 6563500 Lake Home
127 Alpine Trail
Longville MN 56655



website: www.AffinityRealEstate.com | email: info@affinityrealestate.com | office: 218-237-3333 | fax:218-237-3377



\$199,000
MLS 6563500 Lake Home
127 Alpine Trail
Longville MN 56655



website: www.AffinityRealEstate.com | email: info@affinityrealestate.com | office: 218-237-3333 | fax:218-237-3377

Affinity
REAL ESTATE INC

\$199,000
MLS 6563500 Lake Home
127 Alpine Trail
Longville MN 56655



website: www.AffinityRealEstate.com | email: info@affinityrealestate.com | office: 218-237-3333 | fax:218-237-3377



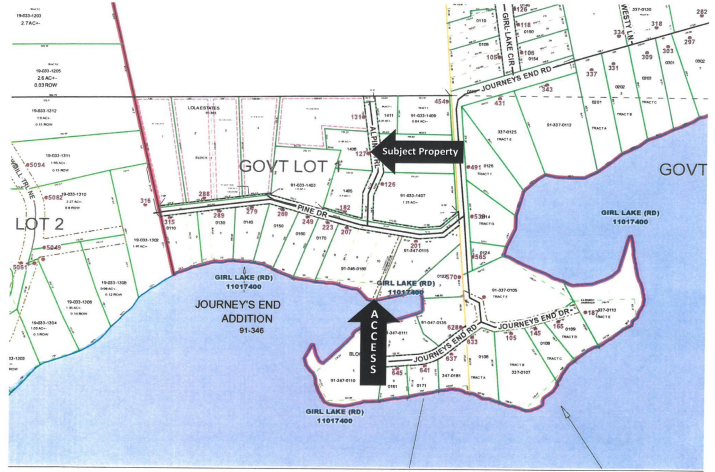
\$199,000
MLS 6563500 Lake Home
127 Alpine Trail
Longville MN 56655



website: www.AffinityRealEstate.com | email: info@affinityrealestate.com | office: 218-237-3333 | fax:218-237-3377



\$199,000
MLS 6563500 Lake Home
127 Alpine Trail
Longville MN 56655



These data are provided on an "AS-IS" basis, without warranty of any type, expressed or implied, including but not limited to any warranty as to their performance, merchantability, or fitness for any purpose.

This map is not a substitute for accurate field surveys or for locating actual property lines and any adjacent features.

website: www.AffinityRealEstate.com | email: info@affinityrealestate.com | office: 218-237-3333 | fax: 218-237-3377



\$199,000
 MLS 6563500 Lake Home
 127 Alpine Trail
 Longville MN 56655