



MLS 6563518 Lake Home

**\$1,100,000**

2,220 sq ft  
4 bedrooms  
3 baths

4328 Harbor Drive  
Nisswa MN 56468

Waterfront: Roy

Status: Active

**Description:**

Fantastic Gull Chain home on Roy Lake with panoramic views and amazing sunsets. Priced to sell, buy it turn key and move right in to this amazing Gull chain setting. Easy navigation to all the chain has to offer. Rare, large boathouse right at the beach with so many possibilities to update with your ideas. 267 ft of lakeshore with nice hard bottom sand by dock/beach area. A very private feel when on the lakeside of the home. Nicely updated 4 bed/3bath home , including new carpet, paint and lighting,with wonderful, huge lakefront patio for entertaining and summer dining. Turn key purchase possible.

**Additional Details:**

Year Built	2001
Lot Acres	0.33
Lot Dimensions	237 x 223 x 174
School District	181
Taxes	\$6,542
Taxes with Assessments	\$6,542
Tax Year	2023

**Additional Features:**

**Fuel:** Electric, Natural Gas **Heat:** Forced Air

**Driving Directions:**

N on Hwy 371, take left on Hazelwood Dr, left on Lower Roy Lake Rd, Right on Charmin Ave, left on Harbor Dr to fire number 4328. No sign on property..



Listed By:  
First Equity Real Estate, LLC

Affinity Real Estate Inc. participates in the Regional Multiple Listing Service of Minnesota, Inc Broker Reciprocity (sm) program, allowing us to display other broker's listings on our website. All properties are subject to prior sale, change or withdrawal.



**Call Affinity Real Estate**

**218-237-3333**

**info@affinityrealestate.com**



**Affinity Real Estate - 600 Park Avenue South - Park Rapids MN 56470**



website: [www.AffinityRealEstate.com](http://www.AffinityRealEstate.com) | email: [info@affinityrealestate.com](mailto:info@affinityrealestate.com) | office: 218-237-3333 | fax:218-237-3377

**Affinity**  
REAL ESTATE INC

**\$1,100,000**  
MLS 6563518 Lake Home  
4328 Harbor Drive  
Nisswa MN 56468



website: [www.AffinityRealEstate.com](http://www.AffinityRealEstate.com) | email: [info@affinityrealestate.com](mailto:info@affinityrealestate.com) | office: 218-237-3333 | fax:218-237-3377

**Affinity**  
REAL ESTATE INC

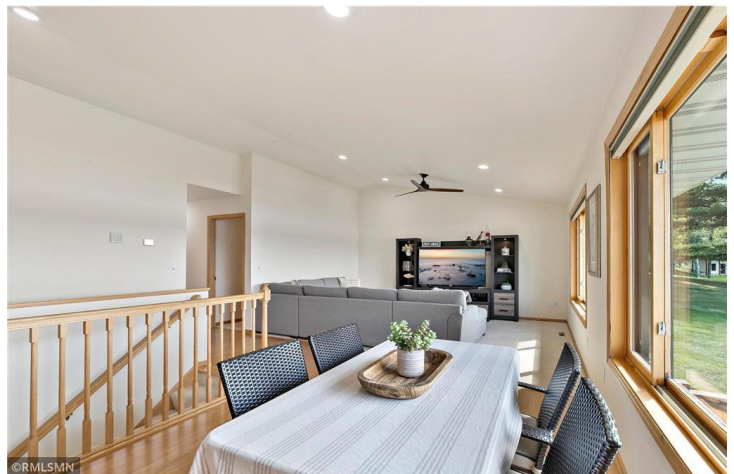
**\$1,100,000**  
MLS 6563518 Lake Home  
4328 Harbor Drive  
Nisswa MN 56468



website: [www.AffinityRealEstate.com](http://www.AffinityRealEstate.com) | email: [info@affinityrealestate.com](mailto:info@affinityrealestate.com) | office: 218-237-3333 | fax:218-237-3377

**Affinity**  
REAL ESTATE INC

**\$1,100,000**  
MLS 6563518 Lake Home  
4328 Harbor Drive  
Nisswa MN 56468



website: [www.AffinityRealEstate.com](http://www.AffinityRealEstate.com) | email: [info@affinityrealestate.com](mailto:info@affinityrealestate.com) | office: 218-237-3333 | fax:218-237-3377



**\$1,100,000**  
MLS 6563518 Lake Home  
4328 Harbor Drive  
Nisswa MN 56468



website: [www.AffinityRealEstate.com](http://www.AffinityRealEstate.com) | email: [info@affinityrealestate.com](mailto:info@affinityrealestate.com) | office: 218-237-3333 | fax:218-237-3377

**Affinity**  
REAL ESTATE INC

**\$1,100,000**  
MLS 6563518 Lake Home  
4328 Harbor Drive  
Nisswa MN 56468



website: [www.AffinityRealEstate.com](http://www.AffinityRealEstate.com) | email: [info@affinityrealestate.com](mailto:info@affinityrealestate.com) | office: 218-237-3333 | fax:218-237-3377



**\$1,100,000**  
MLS 6563518 Lake Home  
4328 Harbor Drive  
Nisswa MN 56468