



MLS 6563596 Lake Home

\$1,250,000

2,960 sq ft
3 bedrooms
3 baths

33160 Shady Beach Lane
Pequot Lakes MN 56472

Waterfront: Upper Hay

Status: Hold

Description:

UP-NORTH LAKE LIVING AT ITS FINEST! Authentic materials, skilled craftsmanship, and imaginative attention to detail combine to create the ultimate Northern Minnesota Lake Home. Architecturally designed and custom built by award-winning Lands End Builders, this stunning 3BR/3BA home sits on a sprawling 1.3 acre, pine-studded lot with 150' of hard sand lakeshore. Highlights include a floor-to-ceiling wood burning fireplace, gourmet kitchen with professional-grade appliances, serving pantry, lakeside screen porch with stone fireplace, lakeside owners suite, finished lower level with 2 bedrooms, office suite with lake views, family room, fitness room and full bath. Professionally landscaped grounds provide multiple verandas with stunning lake views, private hot tub and lakeside firepit. Attached, finished, heated 2 car garage with floor drains AND it COMES FULLY FURNISHED... Don't hesitate on this one!

Additional Details:

| | |
|------------------------|-----------------|
| Year Built | 2013 |
| Lot Acres | 1.32 |
| Lot Dimensions | 150x382x150x388 |
| Garage Stalls | 2 |
| School District | 186 |
| Taxes | \$5,674 |
| Taxes with Assessments | \$5,699 |
| Tax Year | 2024 |

Additional Features:

Fuel: Natural Gas, Wood **Heat:** Forced Air, Fireplace(s), Radiant Floor

Driving Directions:

From Nisswa, north on hwy 371 past Pequot Lakes to County Road 16. East on 16 to West Shady Beach Lane, stay to the right to sign and property at 33160.



Listed By:
Kurilla Real Estate LTD

Affinity Real Estate Inc. participates in the Regional Multiple Listing Service of Minnesota, Inc Broker Reciprocity (sm) program, allowing us to display other broker's listings on our website. All properties are subject to prior sale, change or withdrawal.



Call Affinity Real Estate

218-237-3333

info@affinityrealestate.com



Affinity Real Estate - 600 Park Avenue South - Park Rapids MN 56470



website: www.AffinityRealEstate.com | email: info@affinityrealestate.com | office: 218-237-3333 | fax:218-237-3377



\$1,250,000
MLS 6563596 Lake Home
33160 Shady Beach Lane
Pequot Lakes MN 56472



website: www.AffinityRealEstate.com | email: info@affinityrealestate.com | office: 218-237-3333 | fax:218-237-3377

Affinity
REAL ESTATE INC

\$1,250,000
MLS 6563596 Lake Home
33160 Shady Beach Lane
Pequot Lakes MN 56472



website: www.AffinityRealEstate.com | email: info@affinityrealestate.com | office: 218-237-3333 | fax:218-237-3377

Affinity
REAL ESTATE INC

\$1,250,000
MLS 6563596 Lake Home
33160 Shady Beach Lane
Pequot Lakes MN 56472



website: www.AffinityRealEstate.com | email: info@affinityrealestate.com | office: 218-237-3333 | fax: 218-237-3377

Affinity
REAL ESTATE INC

\$1,250,000
MLS 6563596 Lake Home
33160 Shady Beach Lane
Pequot Lakes MN 56472



website: www.AffinityRealEstate.com | email: info@affinityrealestate.com | office: 218-237-3333 | fax:218-237-3377



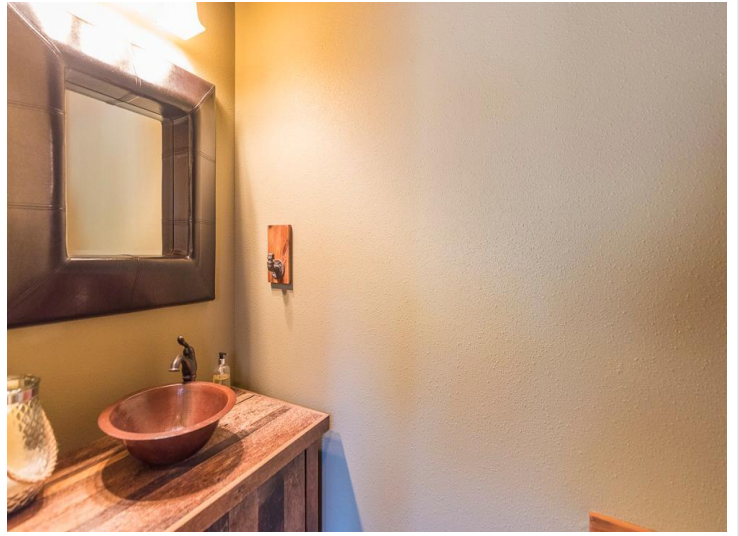
\$1,250,000
MLS 6563596 Lake Home
33160 Shady Beach Lane
Pequot Lakes MN 56472



website: www.AffinityRealEstate.com | email: info@affinityrealestate.com | office: 218-237-3333 | fax: 218-237-3377

Affinity
REAL ESTATE INC

\$1,250,000
MLS 6563596 Lake Home
33160 Shady Beach Lane
Pequot Lakes MN 56472



website: www.AffinityRealEstate.com | email: info@affinityrealestate.com | office: 218-237-3333 | fax:218-237-3377



\$1,250,000
MLS 6563596 Lake Home
33160 Shady Beach Lane
Pequot Lakes MN 56472



website: www.AffinityRealEstate.com | email: info@affinityrealestate.com | office: 218-237-3333 | fax:218-237-3377



\$1,250,000
MLS 6563596 Lake Home
33160 Shady Beach Lane
Pequot Lakes MN 56472