



MLS 6563682 Lake Land

\$1,500,000

Description:

Rare Opportunity in Northern Minnesota! For the first time and likely the last at this price, seize the chance to own 5.65 acres of stunning waterfront property in the highly sought-after Detroit Lakes area. This exceptional parcel features 721 feet of pristine lakeshore and a picturesque elevation, with some sections perched cliff-high above a sandy beach, offering breathtaking, expansive water views. The land is partially wooded, providing a perfect balance of privacy and natural beauty. Ideally located just minutes from Highways 10 and 59 and close to Zorbaz on the north side of the lake, this property combines convenience with tranquility. Designed with a desirable setback from the road, it promises seclusion and an unparalleled lifestyle. This is a unique opportunity to create your dream retreat in the heart of Northern Minnesota!

Additional Details:

Lot Acres	5.65
Lot Dimensions	Irregular
School District	22
Taxes	\$18,920
Taxes with Assessments	\$18,920
Tax Year	2022

Additional Features:

Driving Directions:

Hwy 10 N - S Shore Drive - Property on Right



Listed By:
Coldwell Banker Realty

Affinity Real Estate Inc. participates in the Regional Multiple Listing Service of Minnesota, Inc Broker Reciprocity (sm) program, allowing us to display other broker's listings on our website. All properties are subject to prior sale, change or withdrawal.



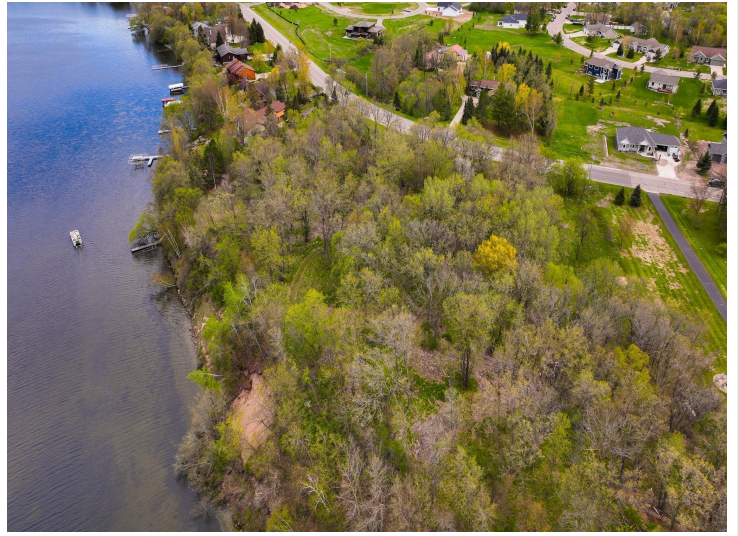
Call Affinity Real Estate

218-237-3333

info@affinityrealestate.com



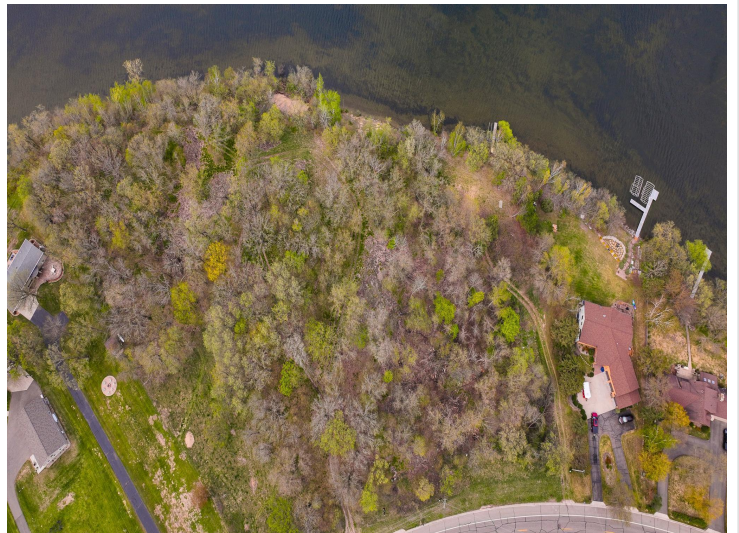
Affinity Real Estate - 600 Park Avenue South - Park Rapids MN 56470



website: www.AffinityRealEstate.com | email: info@affinityrealestate.com | office: 218-237-3333 | fax:218-237-3377

Affinity
REAL ESTATE INC

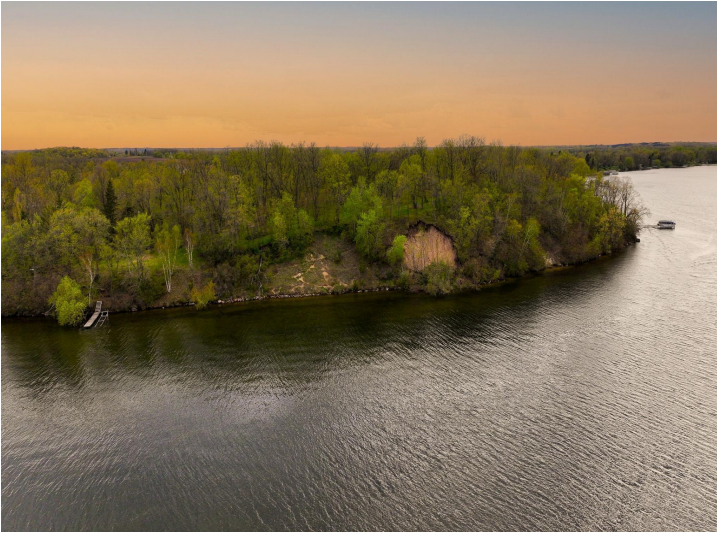
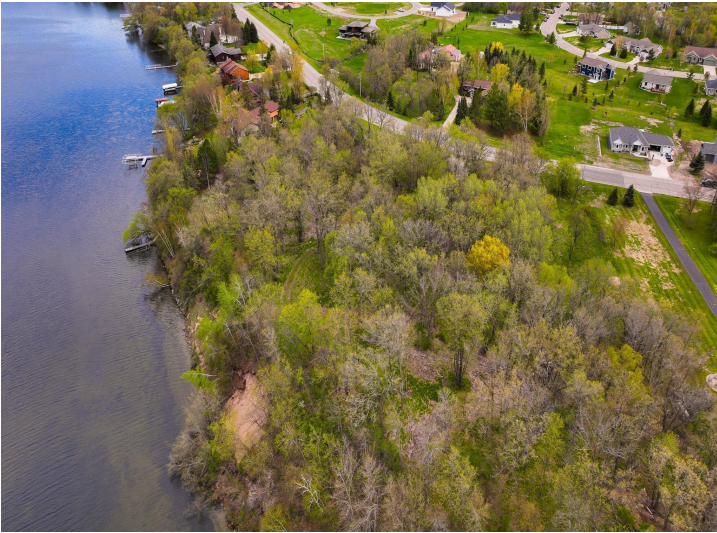
\$1,500,000
MLS 6563682 Lake Land
798 Shore Drive
Detroit Lakes MN 56501



website: www.AffinityRealEstate.com | email: info@affinityrealestate.com | office: 218-237-3333 | fax:218-237-3377



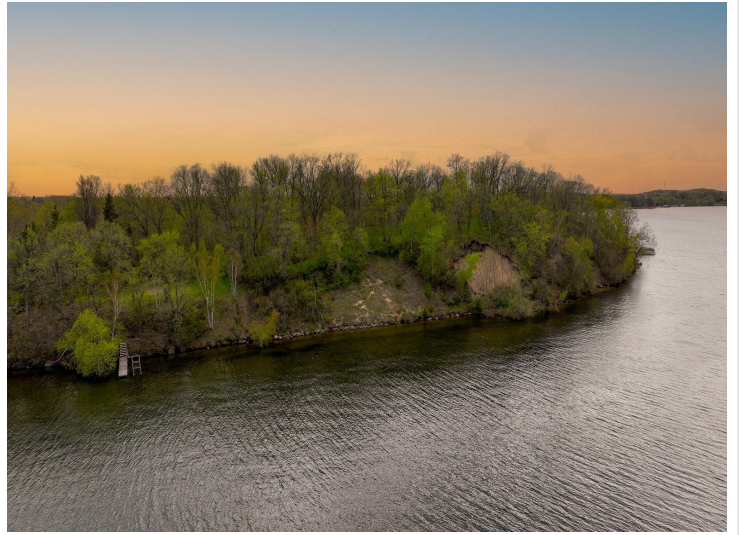
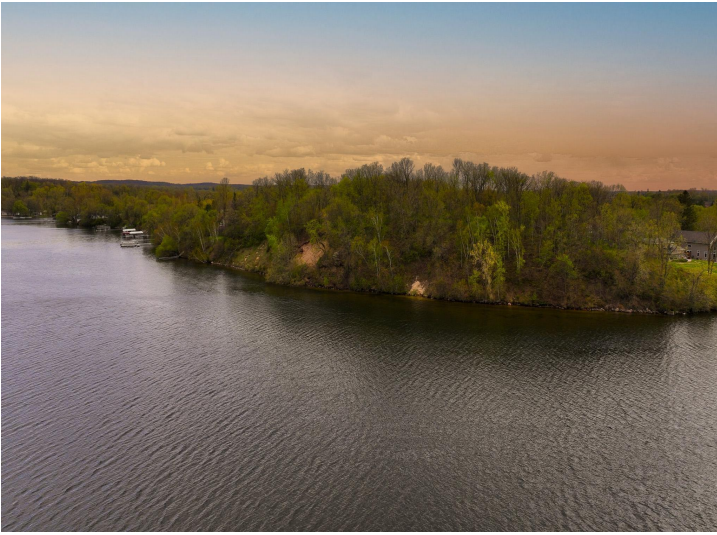
\$1,500,000
MLS 6563682 Lake Land
798 Shore Drive
Detroit Lakes MN 56501



website: www.AffinityRealEstate.com | email: info@affinityrealestate.com | office: 218-237-3333 | fax:218-237-3377

Affinity
REAL ESTATE INC

\$1,500,000
MLS 6563682 Lake Land
798 Shore Drive
Detroit Lakes MN 56501



website: www.AffinityRealEstate.com | email: info@affinityrealestate.com | office: 218-237-3333 | fax:218-237-3377



\$1,500,000
MLS 6563682 Lake Land
798 Shore Drive
Detroit Lakes MN 56501