



MLS 6563809 Lake Land

\$14,900

Description:

Don't miss this opportunity to be on Meadow Lake! Two lots of nearly 2 acres and approximately 747' of shoreline!

Additional Details:

Lot Acres	1.9
Lot Dimensions	IRR
School District	2174
Taxes	\$240
Taxes with Assessments	\$240
Tax Year	2024

Additional Features:

Driving Directions:

N on MN 371 to CR 29, continue on CR 29, take 76th St SW and 72nd St SW to Meadow Lake RD SW in Meadow Brook Township



Listed By:
Positive Realty

Affinity Real Estate Inc. participates in the Regional Multiple Listing Service of Minnesota, Inc Broker Reciprocity (sm) program, allowing us to display other broker's listings on our website. All properties are subject to prior sale, change or withdrawal.



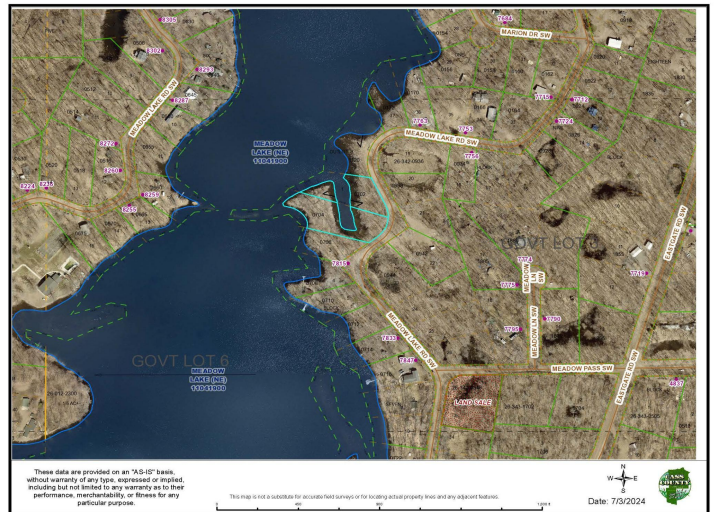
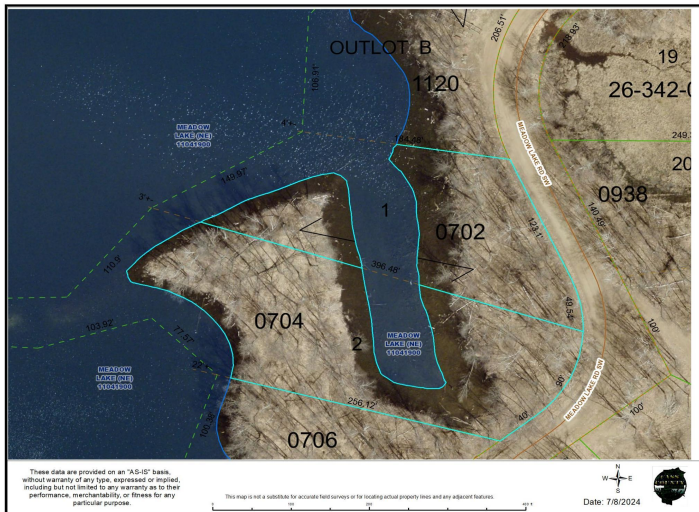
Call Affinity Real Estate

218-237-3333

info@affinityrealestate.com



Affinity Real Estate - 600 Park Avenue South - Park Rapids MN 56470



website: www.AffinityRealEstate.com | email: info@affinityrealestate.com | office: 218-237-3333 | fax:218-237-3377



\$14,900
 MLS 6563809 Lake Land
 TBD Meadow Lake Road
 Motley MN 56466



website: www.AffinityRealEstate.com | email: info@affinityrealestate.com | office: 218-237-3333 | fax:218-237-3377



\$14,900
MLS 6563809 Lake Land
TBD Meadow Lake Road
Motley MN 56466



website: www.AffinityRealEstate.com | email: info@affinityrealestate.com | office: 218-237-3333 | fax:218-237-3377



\$14,900
MLS 6563809 Lake Land
TBD Meadow Lake Road
Motley MN 56466