



MLS 6563989 Residential

**\$329,000**

1,500 sq ft  
3 bedrooms  
2 baths

15610 Explorer Circle  
Park Rapids MN 56470

Status: Active

**Description:**

This impressive 3-bedroom, 2-bathroom home proudly overlooks the Headwater's Golf Club's 5th hole. Boasting a meticulously manicured lawn, an attached 24x24 heated garage, and convenient one-level living with ample storage, this property offers an unbeatable combination of comfort, close proximity to town, and easy access to The Heartland Trail.

**Additional Details:**

Year Built	1995
Lot Acres	0.47
Lot Dimensions	174x100x212x109
Garage Stalls	2
School District	309
Taxes	\$1,320
Taxes with Assessments	\$1,530
Tax Year	2024

**Additional Features:**

**Basement:** Block, Crawl Space **Fuel:** Natural Gas **Garage:** 2 **Heat:** Forced Air, Fireplace(s) **Sewer:** Private Sewer, Tank with Drainage Field  
**Water:** Submersible - 4 Inch, Drilled, Well **Air Conditioning:** Central Air

**Driving Directions:**

From 34/71 in Park Rapids, East on 34 to a left on County Road 1. Follow to a right on Explorer Circle to property on left.



Listed By:  
Wolff & Simon Real Estate

Affinity Real Estate Inc. participates in the Regional Multiple Listing Service of Minnesota, Inc Broker Reciprocity (sm) program, allowing us to display other broker's listings on our website. All properties are subject to prior sale, change or withdrawal.



Call Affinity Real Estate

**218-237-3333**

[info@affinityrealestate.com](mailto:info@affinityrealestate.com)



Affinity Real Estate - 600 Park Avenue South - Park Rapids MN 56470





website: [www.AffinityRealEstate.com](http://www.AffinityRealEstate.com) | email: [info@affinityrealestate.com](mailto:info@affinityrealestate.com) | office: 218-237-3333 | fax: 218-237-3377

**Affinity**  
REAL ESTATE INC

**\$329,000**  
MLS 6563989 Residential  
15610 Explorer Circle  
Park Rapids MN 56470



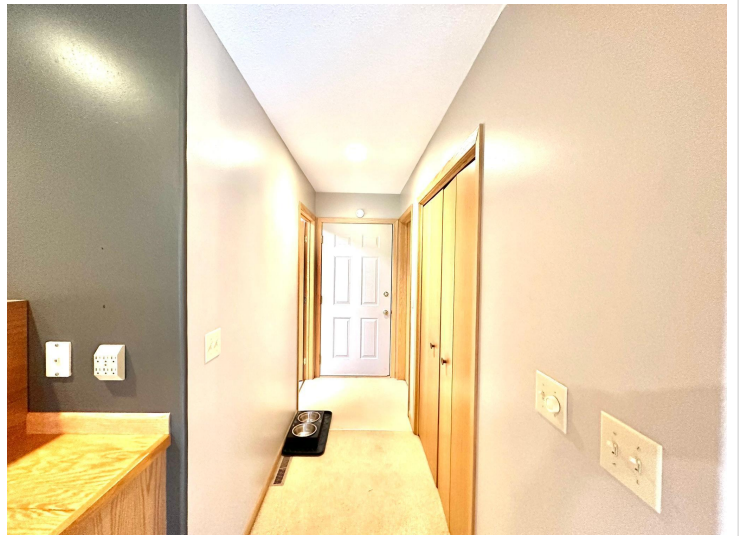


website: [www.AffinityRealEstate.com](http://www.AffinityRealEstate.com) | email: [info@affinityrealestate.com](mailto:info@affinityrealestate.com) | office: 218-237-3333 | fax: 218-237-3377

**Affinity**  
REAL ESTATE INC

**\$329,000**  
MLS 6563989 Residential  
15610 Explorer Circle  
Park Rapids MN 56470



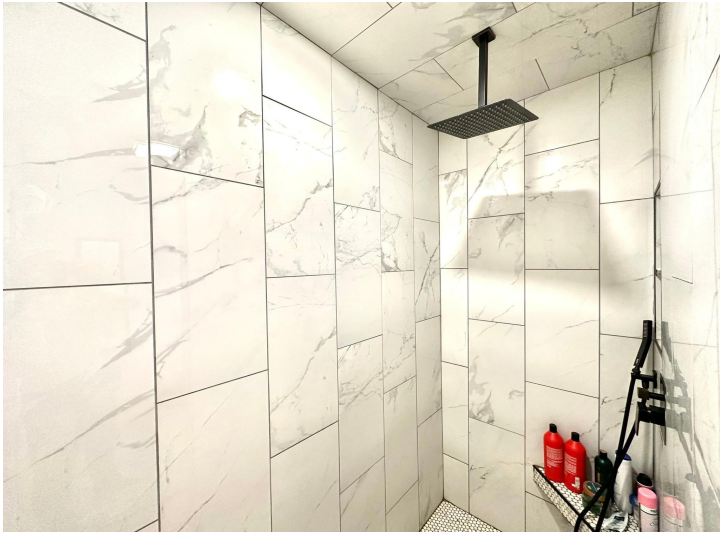


website: [www.AffinityRealEstate.com](http://www.AffinityRealEstate.com) | email: [info@affinityrealestate.com](mailto:info@affinityrealestate.com) | office: 218-237-3333 | fax:218-237-3377

**Affinity**  
REAL ESTATE INC

**\$329,000**  
MLS 6563989 Residential  
15610 Explorer Circle  
Park Rapids MN 56470





website: [www.AffinityRealEstate.com](http://www.AffinityRealEstate.com) | email: [info@affinityrealestate.com](mailto:info@affinityrealestate.com) | office: 218-237-3333 | fax: 218-237-3377

**Affinity**  
REAL ESTATE INC

**\$329,000**  
MLS 6563989 Residential  
15610 Explorer Circle  
Park Rapids MN 56470





website: [www.AffinityRealEstate.com](http://www.AffinityRealEstate.com) | email: [info@affinityrealestate.com](mailto:info@affinityrealestate.com) | office: 218-237-3333 | fax:218-237-3377



**\$329,000**  
MLS 6563989 Residential  
15610 Explorer Circle  
Park Rapids MN 56470





website: [www.AffinityRealEstate.com](http://www.AffinityRealEstate.com) | email: [info@affinityrealestate.com](mailto:info@affinityrealestate.com) | office: 218-237-3333 | fax:218-237-3377



**\$329,000**  
MLS 6563989 Residential  
15610 Explorer Circle  
Park Rapids MN 56470