



MLS 6565545 Lake Land

**\$179,000**

**Description:**

Experience the allure of riverfront living with this remarkable 1+ acre wooded lot near Crosslake, MN on the Pine River, and the famed Whitefish Chain of Lakes. Nestled amidst serene woodlands, this property boasts direct access to the tranquil river, offering a rare opportunity to build your ideal year-round home. Enjoy proximity to a wealth of recreational amenities, including shopping, trails and golf courses ensuring a lifestyle enriched by nature and adventure. With its prime location and scenic surroundings, this parcel promises a desirable blend of seclusion and convenience for buyers seeking a distinctive riverside escape.

**Additional Details:**

Lot Acres	1.31
Lot Dimensions	108x440x110x480
School District	186
Taxes	\$60
Taxes with Assessments	\$60
Tax Year	2025

**Additional Features:**

**Driving Directions:**

In Crosslake by the Dollar Store, take a right onto County Road 37 which turns into County Road 36. Look for sign on right. No fire number.



Listed By:  
Your Home Sold Guaranteed Realty Exclusive

Affinity Real Estate Inc. participates in the Regional Multiple Listing Service of Minnesota, Inc Broker Reciprocity (sm) program, allowing us to display other broker's listings on our website. All properties are subject to prior sale, change or withdrawal.



**Call Affinity Real Estate**

**218-237-3333**

**[info@affinityrealestate.com](mailto:info@affinityrealestate.com)**



**Affinity Real Estate - 600 Park Avenue South - Park Rapids MN 56470**



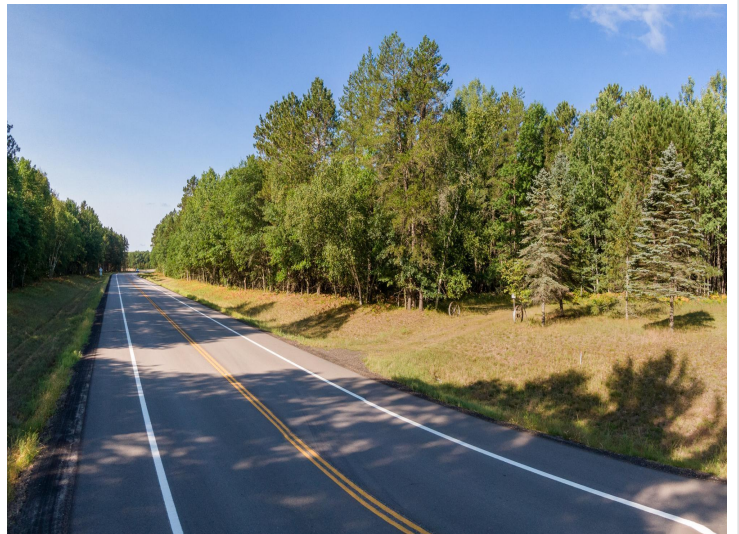


website: [www.AffinityRealEstate.com](http://www.AffinityRealEstate.com) | email: [info@affinityrealestate.com](mailto:info@affinityrealestate.com) | office: 218-237-3333 | fax: 218-237-3377



**\$179,000**  
 MLS 6565545 Lake Land  
 Lot 2 River Trail Road  
 Crosslake MN 56442



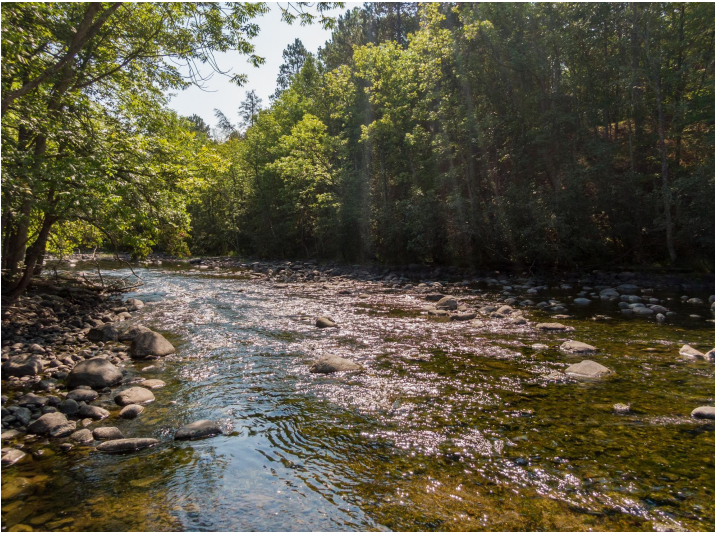


website: [www.AffinityRealEstate.com](http://www.AffinityRealEstate.com) | email: [info@affinityrealestate.com](mailto:info@affinityrealestate.com) | office: 218-237-3333 | fax: 218-237-3377



**\$179,000**  
 MLS 6565545 Lake Land  
 Lot 2 River Trail Road  
 Crosslake MN 56442





website: [www.AffinityRealEstate.com](http://www.AffinityRealEstate.com) | email: [info@affinityrealestate.com](mailto:info@affinityrealestate.com) | office: 218-237-3333 | fax: 218-237-3377



**\$179,000**

MLS 6565545 Lake Land  
Lot 2 River Trail Road  
Crosslake MN 56442





website: [www.AffinityRealEstate.com](http://www.AffinityRealEstate.com) | email: [info@affinityrealestate.com](mailto:info@affinityrealestate.com) | office: 218-237-3333 | fax: 218-237-3377



**\$179,000**  
 MLS 6565545 Lake Land  
 Lot 2 River Trail Road  
 Crosslake MN 56442