

LITTLE DETROIT LAKE



MLS 6565744 Lake Land

\$180,000

Description:

Build your dream home and enjoy your own boat slip on Little Detroit Lake. This lot is a for single family home with a 3,109 sq. ft. footprint. Rare opportunity - one of three buildable lots left in this CIC. Across the street from the new walking trail, minutes from all of the restaurants around the lakes and everything else DL has to offer! \$150/month association fee covers all exterior care including shoreline/dock maintenance, and building insurance.

Additional Details:

Lot Acres	0.07
Lot Dimensions	Irregular
School District	22
Taxes	\$2,136
Taxes with Assessments	\$2,136
Tax Year	2023

Additional Features:

Driving Directions:

Corner of West Lake Drive and Hwy 6. Lot closest to Co. 6



Listed By:
RE/MAX LAKES REGION

Affinity Real Estate Inc. participates in the Regional Multiple Listing Service of Minnesota, Inc Broker Reciprocity (sm) program, allowing us to display other broker's listings on our website. All properties are subject to prior sale, change or withdrawal.



Call Affinity Real Estate

218-237-3333

info@affinityrealestate.com



Affinity Real Estate - 600 Park Avenue South - Park Rapids MN 56470

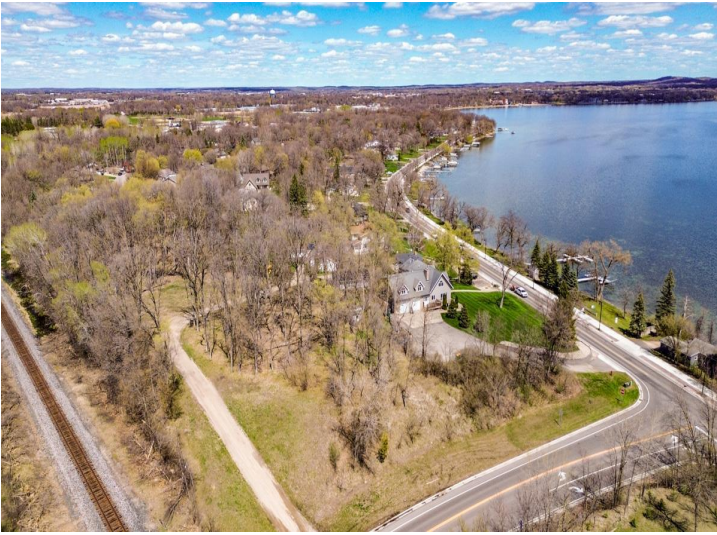
LITTLE DETROIT LAKE



website: www.AffinityRealEstate.com | email: info@affinityrealestate.com | office: 218-237-3333 | fax: 218-237-3377



\$180,000
MLS 6565744 Lake Land
1380 County Highway 6
Detroit Lakes MN 56501



website: www.AffinityRealEstate.com | email: info@affinityrealestate.com | office: 218-237-3333 | fax:218-237-3377



\$180,000
MLS 6565744 Lake Land
1380 County Highway 6
Detroit Lakes MN 56501