



LITTLE DETROIT LAKE



MLS 6565748 Lake Land

\$180,000

Description:

Build a ~4,332 sq. ft. twin home, and each side will have its own boat slip on Detroit Lake. Rare opportunity - one of three buildable lots left in this CIC. Across the street from the new walking trail, minutes from all of the restaurants around the lakes and everything else DL has to offer! \$150/month association fee covers all exterior care including shoreline/dock maintenance, and building insurance.


Additional Details:

Lot Acres	0.1
Lot Dimensions	Irregular
School District	22
Taxes	\$4,272
Taxes with Assessments	\$4,272
Tax Year	2023

Additional Features:

Driving Directions:

Corner of Co Hwy 6 & West Lake Drive



Listed By:
RE/MAX LAKES REGION

Affinity Real Estate Inc. participates in the Regional Multiple Listing Service of Minnesota, Inc Broker Reciprocity (sm) program, allowing us to display other broker's listings on our website. All properties are subject to prior sale, change or withdrawal.



Call Affinity Real Estate
218-237-3333
info@affinityrealestate.com





Affinity Real Estate - 600 Park Avenue South - Park Rapids MN 56470

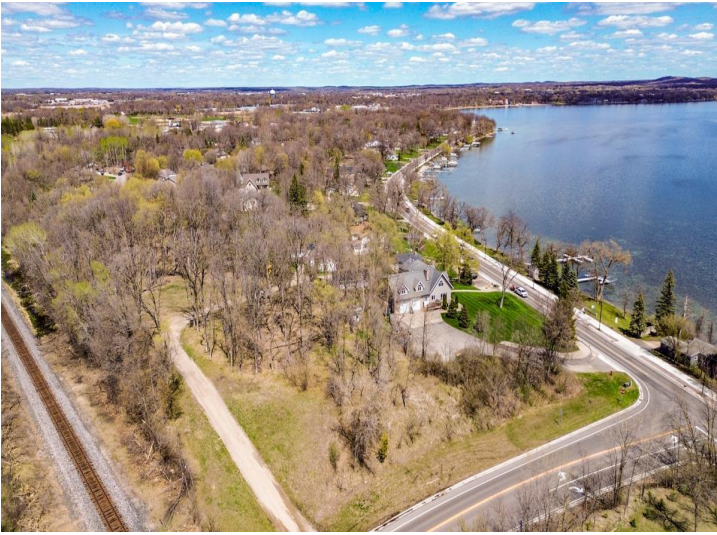
LITTLE DETROIT LAKE



website: www.AffinityRealEstate.com | email: info@affinityrealestate.com | office: 218-237-3333 | fax: 218-237-3377



\$180,000
MLS 6565748 Lake Land
1382 & 1384 County
Highway 6
Detroit Lakes MN 56501



website: www.AffinityRealEstate.com | email: info@affinityrealestate.com | office: 218-237-3333 | fax:218-237-3377



\$180,000
MLS 6565748 Lake Land
1382 & 1384 County
Highway 6
Detroit Lakes MN 56501