

MLS 6565797 Land

\$59,900

4 Acres
Raw Land

TBD County Highway 53
New York Mills MN 56567

Status: Active

Description:

Approximately 4 acre building site near Perham. This is an ideal location to build your home or provide extra storage space for your lake cabin. Located on County Highway 53 just a jump off of Highway #10. Tons of potential for personal or commercial use.

Agent is related to seller.

Additional Details:

Lot Acres	4
Lot Dimensions	4 acre
School District	549
Taxes	(unreported)
Taxes with Assessments	(unreported)
Tax Year	2024

Additional Features:

Driving Directions:

From Perham: East on Hwy #10 to Hwy #53 to sign.



Listed By:
Coldwell Banker Preferred Partners

Affinity Real Estate Inc. participates in the Regional Multiple Listing Service of Minnesota, Inc Broker Reciprocity (sm) program, allowing us to display other broker's listings on our website. All properties are subject to prior sale, change or withdrawal.



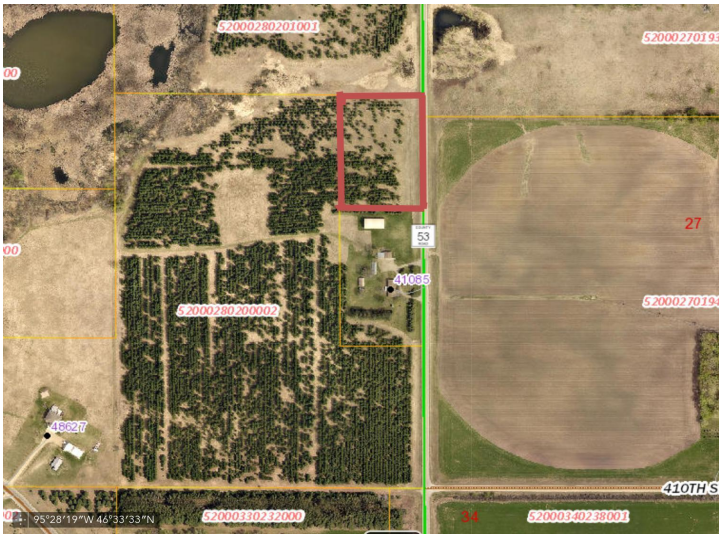
Call Affinity Real Estate

218-237-3333

info@affinityrealestate.com



Affinity Real Estate - 600 Park Avenue South - Park Rapids MN 56470



website: www.AffinityRealEstate.com | email: info@affinityrealestate.com | office: 218-237-3333 | fax:218-237-3377



\$59,900
MLS 6565797 Land
TBD County Highway 53
New York Mills MN 56567