



MLS 6565963 Residential

\$209,900

1,755 sq ft
2 bedrooms
1 baths

12512 County 13
Menahga MN 56464

Status: Pending

Description:

This two-bedroom, one-bath farmhouse is nestled on over 9 acres of beautiful land. With its spacious open field and majestic old growth trees, this property is truly a place to call home. You'll also find several outbuildings and a fenced-in area, offering ample space and versatility.

Additional Details:

Year Built	1958
Lot Acres	9.3
Lot Dimensions	450x900
Garage Stalls	2
School District	308
Taxes	\$1,188
Taxes with Assessments	\$1,188
Tax Year	2024

Additional Features:

Fuel: Propane **Heat:** Forced Air

Driving Directions:

From 34 and 71 in Park Rapids East on 34 to a right on County Hwy 20, follow for 3 miles to a left on County 17 follow for 4 miles to a right on County 13 for 4 miles to property.



Listed By:
Wolff & Simon Real Estate

Affinity Real Estate Inc. participates in the Regional Multiple Listing Service of Minnesota, Inc Broker Reciprocity (sm) program, allowing us to display other broker's listings on our website. All properties are subject to prior sale, change or withdrawal.



Call Affinity Real Estate

218-237-3333

info@affinityrealestate.com



Affinity Real Estate - 600 Park Avenue South - Park Rapids MN 56470



website: www.AffinityRealEstate.com | email: info@affinityrealestate.com | office: 218-237-3333 | fax:218-237-3377

Affinity
REAL ESTATE INC

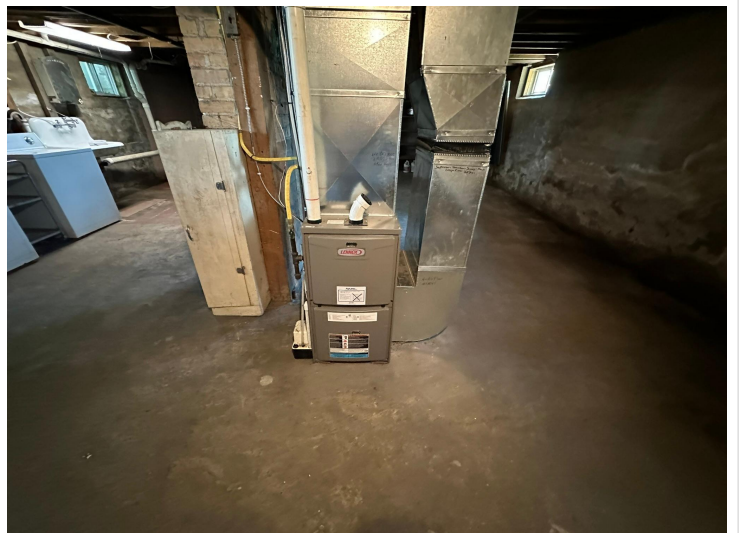
\$209,900
MLS 6565963 Residential
12512 County 13
Menahga MN 56464



website: www.AffinityRealEstate.com | email: info@affinityrealestate.com | office: 218-237-3333 | fax:218-237-3377

Affinity
REAL ESTATE INC

\$209,900
MLS 6565963 Residential
12512 County 13
Menahga MN 56464



website: www.AffinityRealEstate.com | email: info@affinityrealestate.com | office: 218-237-3333 | fax:218-237-3377



\$209,900
MLS 6565963 Residential
12512 County 13
Menahga MN 56464



website: www.AffinityRealEstate.com | email: info@affinityrealestate.com | office: 218-237-3333 | fax:218-237-3377



\$209,900
MLS 6565963 Residential
12512 County 13
Menahga MN 56464



website: www.AffinityRealEstate.com | email: info@affinityrealestate.com | office: 218-237-3333 | fax:218-237-3377



\$209,900
MLS 6565963 Residential
12512 County 13
Menahga MN 56464