



MLS 6566044 Land

\$232,750

1.92 Acres
Subdivided

TBD Comfort Drive
Bemidji MN 56601

Status: Active

Description:

This is one stellar lot for the business you've always dreamt of! Almost 2 acres on this commercial lot with city utilities, paved frontage, Hwy 2 visibility, completely fenced with plenty of level building area tucked in towering pines. Don't miss this location for your business's future!

Additional Details:

| | |
|------------------------|-----------------|
| Lot Acres | 1.92 |
| Lot Dimensions | 157x410x208x362 |
| School District | 31 |
| Taxes | \$3,568 |
| Taxes with Assessments | \$3,568 |
| Tax Year | 2023 |

Additional Features:

Driving Directions:

From 197 and Hwy 71, West on 197, North on Gillett Dr NW, South on Comfort Dr NW, Lot on end of cul de sac.



Listed By:
Grimes Realty

Affinity Real Estate Inc. participates in the Regional Multiple Listing Service of Minnesota, Inc Broker Reciprocity (sm) program, allowing us to display other broker's listings on our website. All properties are subject to prior sale, change or withdrawal.



Call Affinity Real Estate

218-237-3333

info@affinityrealestate.com



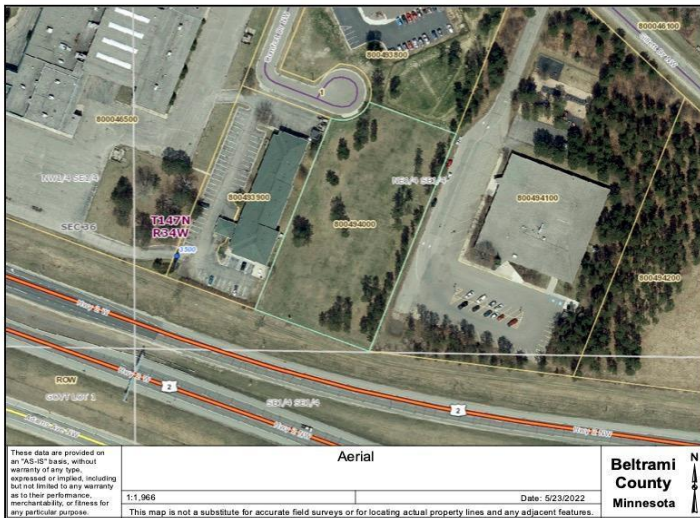
Affinity Real Estate - 600 Park Avenue South - Park Rapids MN 56470



website: www.AffinityRealEstate.com | email: info@affinityrealestate.com | office: 218-237-3333 | fax:218-237-3377



\$232,750
MLS 6566044 Land
TBD Comfort Drive
Bemidji MN 56601



website: www.AffinityRealEstate.com | email: info@affinityrealestate.com | office: 218-237-3333 | fax:218-237-3377



\$232,750
 MLS 6566044 Land
 TBD Comfort Drive
 Bemidji MN 56601