



MLS 6566482 Land

**\$68,000**

3.04 Acres  
Other

TBD Sherman Dr/Elliot Rd  
Bemidji MN 56601

Status: Active

**Description:**

AMAZING wooded building lot on Bemidji's highly sought after East side. This large 3.04 acre lot has paved frontage on both Sherman Dr and Elliot Rd and features a nice mix of trees, is in VERY close proximity to the Paul Bunyan Trail, and the State Game Refuge is just down the street. Set up your showing today!

**Additional Details:**

Lot Acres	3.04
Lot Dimensions	301.352x402.86x300x428.64
School District	31
Taxes	\$800
Taxes with Assessments	\$800
Tax Year	2024

**Additional Features:**

**Driving Directions:**

North on Lake Ave. East on Sherman to property on your left.



Listed By:  
Rogue Real Estate Co.

Affinity Real Estate Inc. participates in the Regional Multiple Listing Service of Minnesota, Inc Broker Reciprocity (sm) program, allowing us to display other broker's listings on our website. All properties are subject to prior sale, change or withdrawal.



Call Affinity Real Estate

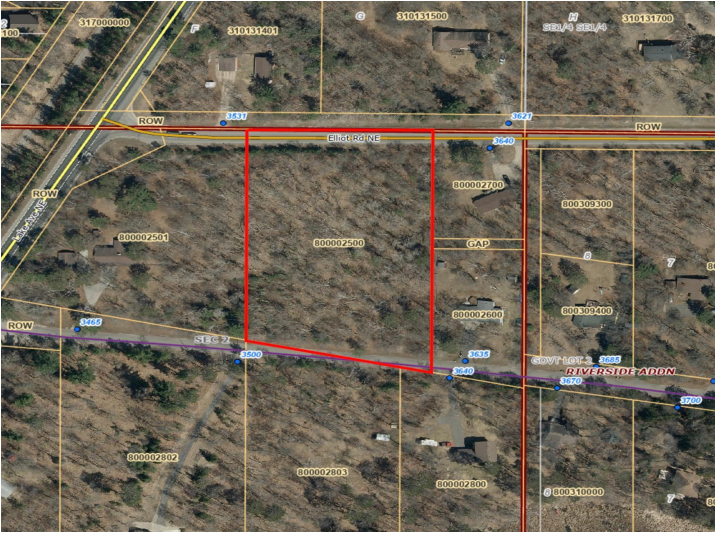
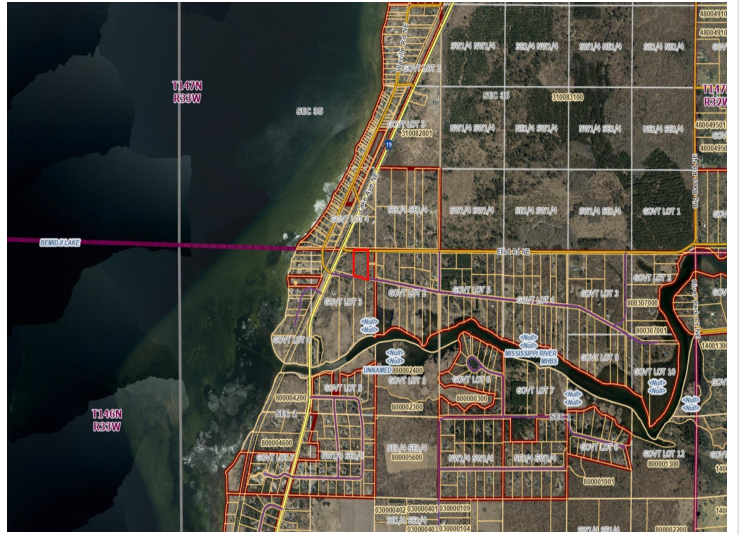
**218-237-3333**

[info@affinityrealestate.com](mailto:info@affinityrealestate.com)



Affinity Real Estate - 600 Park Avenue South - Park Rapids MN 56470





website: [www.AffinityRealEstate.com](http://www.AffinityRealEstate.com) | email: [info@affinityrealestate.com](mailto:info@affinityrealestate.com) | office: 218-237-3333 | fax:218-237-3377



**\$68,000**  
MLS 6566482 Land  
TBD Sherman Dr/Elliot Rd  
Bemidji MN 56601