



MLS 6566829 Residential

**\$315,000**

3,746 sq ft  
4 bedrooms  
3 baths

3001 Blue Spruce Lane  
Bemidji MN 56601

Status: Pending

**Description:**

Desirable ranch townhome for sale! Enjoy easy one-level living with spacious bedrooms, new appliances, wood and tiled floors, eat-in kitchen, informal dining, den, and a heated garage. Lower level with 2nd kitchen and bath perfect for guests and hobbies. Includes association maintenance for shrubbery, underground sprinklers, mowing, snow removal, and garbage. Features walking trails, fountain, and ample green space. Conveniently near shopping and healthcare. Don't miss out—schedule your viewing today!

**Additional Details:**

|                        |         |
|------------------------|---------|
| Year Built             | 2001    |
| Lot Acres              | 0.08    |
| Lot Dimensions         | 55x60   |
| Garage Stalls          | 2       |
| School District        | 31      |
| Taxes                  | \$4,604 |
| Taxes with Assessments | \$4,604 |
| Tax Year               | 2024    |

**Additional Features:**

**Basement:** Block, Egress Window(s), Finished, Full, Storage Space **Fuel:** Natural Gas **Garage:** 2 **Heat:** Forced Air **Sewer:** City Sewer/Connected  
**Water:** City Water/Connected **Air Conditioning:** Central Air

**Driving Directions:**

North on Irvine Ave, left on 30th St, right on Blue Spruce Ln. First home on the left.



Listed By:  
Century 21 Dickinson

Affinity Real Estate Inc. participates in the Regional Multiple Listing Service of Minnesota, Inc Broker Reciprocity (sm) program, allowing us to display other broker's listings on our website. All properties are subject to prior sale, change or withdrawal.



Call Affinity Real Estate

**218-237-3333**

[info@affinityrealestate.com](mailto:info@affinityrealestate.com)



Affinity Real Estate - 600 Park Avenue South - Park Rapids MN 56470





website: [www.AffinityRealEstate.com](http://www.AffinityRealEstate.com) | email: [info@affinityrealestate.com](mailto:info@affinityrealestate.com) | office: 218-237-3333 | fax: 218-237-3377

**Affinity**  
REAL ESTATE INC

**\$315,000**  
MLS 6566829 Residential  
3001 Blue Spruce Lane  
Bemidji MN 56601





website: [www.AffinityRealEstate.com](http://www.AffinityRealEstate.com) | email: [info@affinityrealestate.com](mailto:info@affinityrealestate.com) | office: 218-237-3333 | fax:218-237-3377

**Affinity**  
REAL ESTATE INC

**\$315,000**  
MLS 6566829 Residential  
3001 Blue Spruce Lane  
Bemidji MN 56601



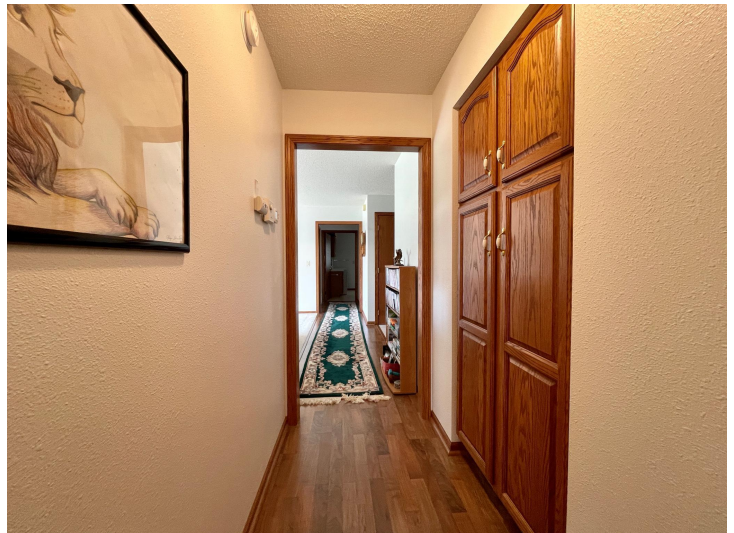


website: [www.AffinityRealEstate.com](http://www.AffinityRealEstate.com) | email: [info@affinityrealestate.com](mailto:info@affinityrealestate.com) | office: 218-237-3333 | fax: 218-237-3377

**Affinity**  
REAL ESTATE INC

**\$315,000**  
MLS 6566829 Residential  
3001 Blue Spruce Lane  
Bemidji MN 56601





website: [www.AffinityRealEstate.com](http://www.AffinityRealEstate.com) | email: [info@affinityrealestate.com](mailto:info@affinityrealestate.com) | office: 218-237-3333 | fax: 218-237-3377

**Affinity**  
REAL ESTATE INC

**\$315,000**  
MLS 6566829 Residential  
3001 Blue Spruce Lane  
Bemidji MN 56601





website: [www.AffinityRealEstate.com](http://www.AffinityRealEstate.com) | email: [info@affinityrealestate.com](mailto:info@affinityrealestate.com) | office: 218-237-3333 | fax: 218-237-3377

**Affinity**  
REAL ESTATE INC

**\$315,000**  
MLS 6566829 Residential  
3001 Blue Spruce Lane  
Bemidji MN 56601





website: [www.AffinityRealEstate.com](http://www.AffinityRealEstate.com) | email: [info@affinityrealestate.com](mailto:info@affinityrealestate.com) | office: 218-237-3333 | fax:218-237-3377

**Affinity**  
REAL ESTATE INC

**\$315,000**  
MLS 6566829 Residential  
3001 Blue Spruce Lane  
Bemidji MN 56601





website: [www.AffinityRealEstate.com](http://www.AffinityRealEstate.com) | email: [info@affinityrealestate.com](mailto:info@affinityrealestate.com) | office: 218-237-3333 | fax:218-237-3377

**Affinity**  
REAL ESTATE INC

**\$315,000**  
MLS 6566829 Residential  
3001 Blue Spruce Lane  
Bemidji MN 56601





website: [www.AffinityRealEstate.com](http://www.AffinityRealEstate.com) | email: [info@affinityrealestate.com](mailto:info@affinityrealestate.com) | office: 218-237-3333 | fax:218-237-3377



**\$315,000**  
MLS 6566829 Residential  
3001 Blue Spruce Lane  
Bemidji MN 56601