



MLS 6566982 Land

\$60,000

5.38 Acres
Raw Land

TBD Cattail Lane
Bemidji MN 56601

Status: Active

Description:

Build your dream home here! Just minutes to Bemidji, several lakes, and Greenwood Golf Course is this 5.38-acre lot with rolling hills, trees, and just off paved roads! This property has a lot to offer! Come take a look!

Additional Details:

Lot Acres	5.38
Lot Dimensions	468x495
School District	31
Taxes	\$134
Taxes with Assessments	\$134
Tax Year	2024

Additional Features:

Driving Directions:

Roosevelt Rd for 7.4 miles. Left on Swenson Rd SE. Right on Cattail LN E, property on right, look for sign.



Listed By:
Coldwell Banker Crown Realtors

Affinity Real Estate Inc. participates in the Regional Multiple Listing Service of Minnesota, Inc Broker Reciprocity (sm) program, allowing us to display other broker's listings on our website. All properties are subject to prior sale, change or withdrawal.



Call Affinity Real Estate

218-237-3333

info@affinityrealestate.com



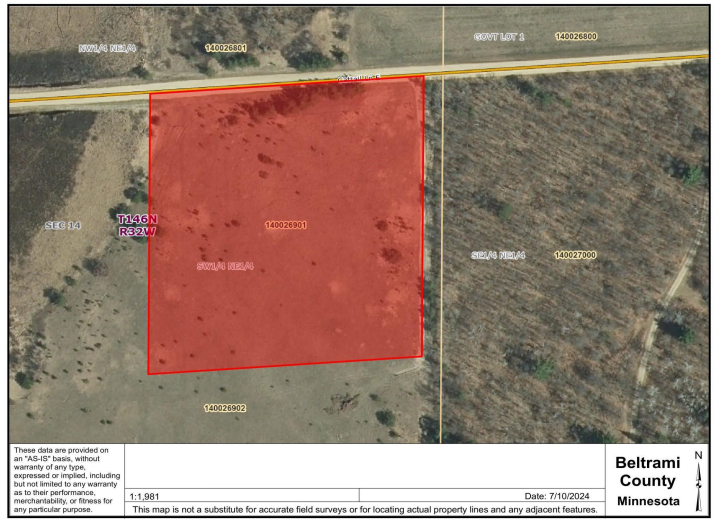
Affinity Real Estate - 600 Park Avenue South - Park Rapids MN 56470



website: www.AffinityRealEstate.com | email: info@affinityrealestate.com | office: 218-237-3333 | fax:218-237-3377



\$60,000
MLS 6566982 Land
TBD Cattail Lane
Bemidji MN 56601



These data are provided on an "AS-IS" basis, without warranty of any type, expressed or implied, including but not limited to any warranty as to their performance, merchantability, or fitness for any particular purpose.

1:1,981

Date: 7/10/2024

This map is not a substitute for accurate field surveys or for locating actual property lines and any adjacent features.

**Beltrami
County
Minnesota**

website: www.AffinityRealEstate.com | email: info@affinityrealestate.com | office: 218-237-3333 | fax:218-237-3377



\$60,000
 MLS 6566982 Land
 TBD Cattail Lane
 Bemidji MN 56601