



MLS 6567364 Residential

\$295,000

1,650 sq ft
3 bedrooms
2 baths

7564 Ski Chalet Drive
Pequot Lakes MN 56472

Status: Active

Description:

Don't miss out on this home in Breezy Point! This beautifully remodeled gem, both inside and out, offers 3 bedrooms, 2 bathrooms, a cozy family room with a fireplace, a convenient laundry room, and a primary suite with a walk-in closet. Nestled on just over 1 acre of lush northern landscape, the property features a large unfinished basement with endless potential for equity building and a two-car garage. With ample space for outdoor activities, gardening, and enjoying the natural beauty of Breezy Point, this home is perfect for a growing family or those seeking a peaceful retreat. Don't miss this incredible opportunity—schedule your private showing today and experience the charm of this home that's been brought back to life!

Additional Details:

Year Built	2000
Lot Acres	1.03
Lot Dimensions	195x230
Garage Stalls	2
School District	186
Taxes	\$1,652
Taxes with Assessments	\$1,652
Tax Year	2023

Additional Features:

Basement: Unfinished **Fuel:** Natural Gas **Garage:** 2 **Heat:** Forced Air, Fireplace(s) **Sewer:** Private Sewer, Tank with Drainage Field
Water: Private, Well **Air Conditioning:** Central Air

Driving Directions:

From County Rd 11, head North on Ranchette Drive, take first right eastbound on Ski Chalet Dr, Home will be first house on the left.



Listed By:
Woods to Water Real Estate

Affinity Real Estate Inc. participates in the Regional Multiple Listing Service of Minnesota, Inc Broker Reciprocity (sm) program, allowing us to display other broker's listings on our website. All properties are subject to prior sale, change or withdrawal.



Call Affinity Real Estate

218-237-3333

info@affinityrealestate.com



Affinity Real Estate - 600 Park Avenue South - Park Rapids MN 56470



website: www.AffinityRealEstate.com | email: info@affinityrealestate.com | office: 218-237-3333 | fax:218-237-3377

Affinity
REAL ESTATE INC

\$295,000
MLS 6567364 Residential
7564 Ski Chalet Drive
Pequot Lakes MN 56472



website: www.AffinityRealEstate.com | email: info@affinityrealestate.com | office: 218-237-3333 | fax:218-237-3377



\$295,000
MLS 6567364 Residential
7564 Ski Chalet Drive
Pequot Lakes MN 56472



website: www.AffinityRealEstate.com | email: info@affinityrealestate.com | office: 218-237-3333 | fax:218-237-3377

Affinity
REAL ESTATE INC

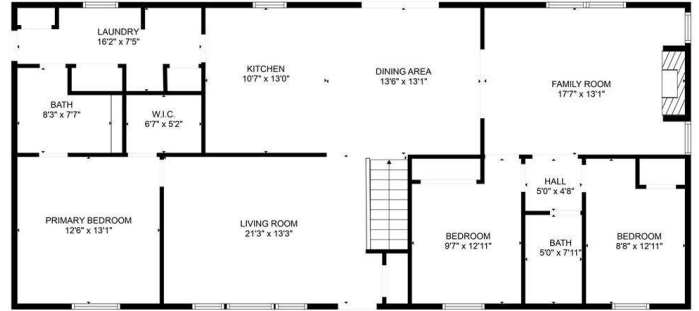
\$295,000
MLS 6567364 Residential
7564 Ski Chalet Drive
Pequot Lakes MN 56472



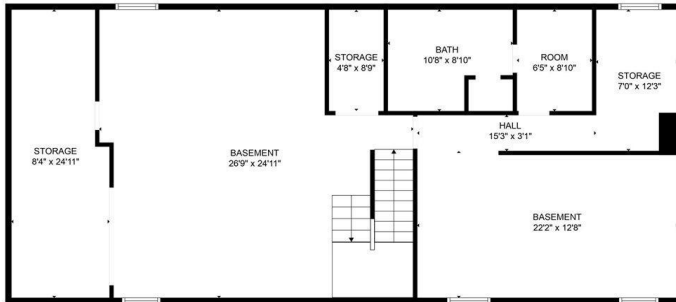
website: www.AffinityRealEstate.com | email: info@affinityrealestate.com | office: 218-237-3333 | fax:218-237-3377

Affinity
REAL ESTATE INC

\$295,000
MLS 6567364 Residential
7564 Ski Chalet Drive
Pequot Lakes MN 56472



FLOOR PLAN CREATED BY CUBSCASA APP. MEASUREMENTS DEEMED HIGHLY RELIABLE BUT NOT GUARANTEED.



FLOOR PLAN CREATED BY CUBSCASA APP. MEASUREMENTS DEEMED HIGHLY RELIABLE BUT NOT GUARANTEED.

website: www.AffinityRealEstate.com | email: info@affinityrealestate.com | office: 218-237-3333 | fax: 218-237-3377



\$295,000
 MLS 6567364 Residential
 7564 Ski Chalet Drive
 Pequot Lakes MN 56472