



MLS 6567513 Land

\$79,000

1.56 Acres
Raw Land

XX Lilac St
Pequot Lakes MN 56472

Status: Active



Description:

(description unavailable)

Additional Details:

Lot Acres	1.56
Lot Dimensions	170x380x170x380
School District	186
Taxes	\$234
Taxes with Assessments	\$234
Tax Year	2023

Additional Features:

Driving Directions:

Great commercial lot located on Patriot Ave in Pequot Lakes. Additional adjoining lots available.



Listed By:
Lakes & Leisure Realty

Affinity Real Estate Inc. participates in the Regional Multiple Listing Service of Minnesota, Inc Broker Reciprocity (sm) program, allowing us to display other broker's listings on our website. All properties are subject to prior sale, change or withdrawal.



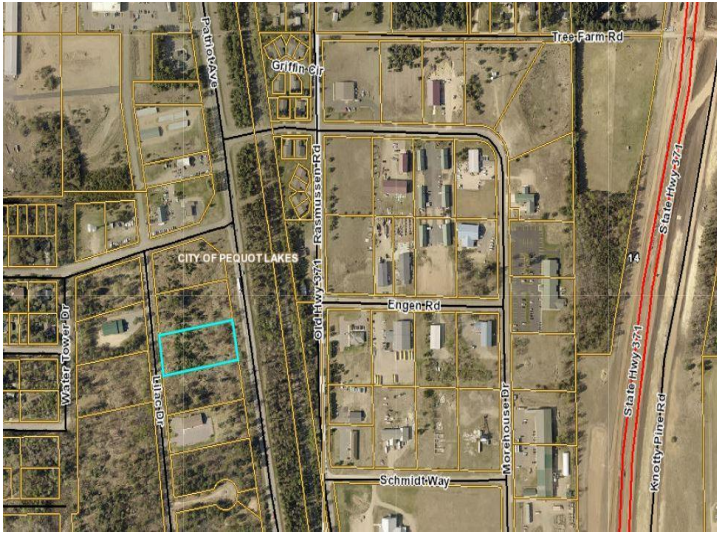
Call Affinity Real Estate

218-237-3333

info@affinityrealestate.com



Affinity Real Estate - 600 Park Avenue South - Park Rapids MN 56470



website: www.AffinityRealEstate.com | email: info@affinityrealestate.com | office: 218-237-3333 | fax:218-237-3377



\$79,000
MLS 6567513 Land
XX Lilac St
Pequot Lakes MN 56472