



MLS 6567523 Land

\$79,000

1.54 Acres
Raw Land

XX Lilac St
Pequot Lakes MN 56472

Status: Active

Description:

(description unavailable)

Additional Details:

Lot Acres	1.54
Lot Dimensions	170x3735x170x375
School District	186
Taxes	\$230
Taxes with Assessments	\$230
Tax Year	2023

Additional Features:

Driving Directions:

Great commercial property located in Pequot Lakes off Patriot Ave for great visibility. Add'l adjoining lots available.



Listed By:
Lakes & Leisure Realty

Affinity Real Estate Inc. participates in the Regional Multiple Listing Service of Minnesota, Inc Broker Reciprocity (sm) program, allowing us to display other broker's listings on our website. All properties are subject to prior sale, change or withdrawal.



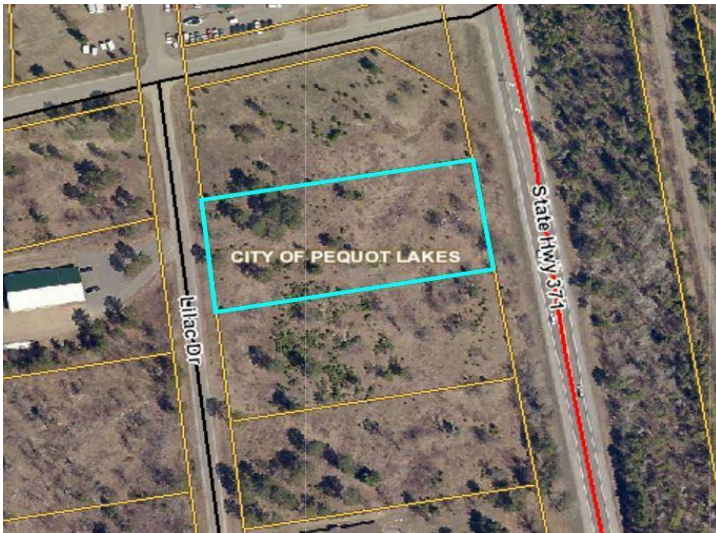
Call Affinity Real Estate

218-237-3333

info@affinityrealestate.com



Affinity Real Estate - 600 Park Avenue South - Park Rapids MN 56470



website: www.AffinityRealEstate.com | email: info@affinityrealestate.com | office: 218-237-3333 | fax: 218-237-3377



\$79,000
MLS 6567523 Land
XX Lilac St
Pequot Lakes MN 56472