



MLS 6567593 Lake Land

**\$98,000**

**Description:**

Welcome to Big Lake! East of Bemidji and quietly residing in the Chippewa National Forest, this lakeshore lot with no covenants is just shy of 2 1/2 acres on Big Lake with 150' of lakeshore. Electric, well and septic are on site along with two sheds (one for cleaning your fish and one for storage) and a boardwalk to the water. Big Lake is 35' deep with 10' water clarity and 3591 acres of excellent fishing. Bring your camper, park model or build! Spend the summer in the woods and on the water ~ schedule your showing today!

**Additional Details:**

Lot Acres	2.49
Lot Dimensions	240x742x151x562
School District	31
Taxes	\$698
Taxes with Assessments	\$698
Tax Year	2024

**Additional Features:**

**Driving Directions:**

From Bemidji: get yourself around to the east side of Lake Bemidji to Power Dam RD, then 6.8 miles east on Power Dam to Otter RD. Follow Otter RD for 2.5 miles to Bruner RD. Right on Bruner for 1.5 miles to Basswood. Left on Basswood for approx 2/10ths of a mile. Property on the right.



Listed By:  
Lake-N-Woods Realty

Affinity Real Estate Inc. participates in the Regional Multiple Listing Service of Minnesota, Inc Broker Reciprocity (sm) program, allowing us to display other broker's listings on our website. All properties are subject to prior sale, change or withdrawal.



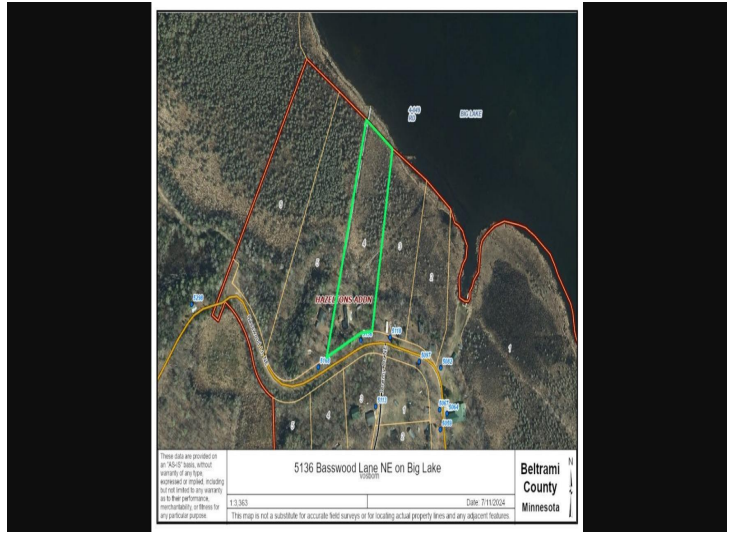
**Call Affinity Real Estate**

**218-237-3333**

**info@affinityrealestate.com**



**Affinity Real Estate - 600 Park Avenue South - Park Rapids MN 56470**



website: [www.AffinityRealEstate.com](http://www.AffinityRealEstate.com) | email: [info@affinityrealestate.com](mailto:info@affinityrealestate.com) | office: 218-237-3333 | fax:218-237-3377



**\$98,000**  
MLS 6567593 Lake Land  
5136 Basswood Lane  
Bemidji MN 56601



website: [www.AffinityRealEstate.com](http://www.AffinityRealEstate.com) | email: [info@affinityrealestate.com](mailto:info@affinityrealestate.com) | office: 218-237-3333 | fax:218-237-3377



**\$98,000**  
MLS 6567593 Lake Land  
5136 Basswood Lane  
Bemidji MN 56601